

## Product datasheet for **TA504776S**

### **NONO Mouse Monoclonal Antibody [Clone ID: OTI3F8]**

#### **Product data:**

<b>Product Type:</b>	Primary Antibodies
<b>Clone Name:</b>	OTI3F8
<b>Applications:</b>	IF, IHC, WB
<b>Recommended Dilution:</b>	WB 1:200~1000, IHC 1:150, IF 1:100
<b>Reactivity:</b>	Human, Dog, Monkey, Mouse, Rat
<b>Host:</b>	Mouse
<b>Isotype:</b>	IgG1
<b>Clonality:</b>	Monoclonal
<b>Immunogen:</b>	Human recombinant protein fragment corresponding to amino acids 184-385 of human NONO(NP_031389) produced in E.coli.
<b>Formulation:</b>	PBS (pH 7.3) containing 1% BSA, 50% glycerol and 0.02% sodium azide.
<b>Concentration:</b>	1 mg/ml
<b>Purification:</b>	Purified from mouse ascites fluids or tissue culture supernatant by affinity chromatography (protein A/G)
<b>Conjugation:</b>	Unconjugated
<b>Storage:</b>	Store at -20°C as received.
<b>Stability:</b>	Stable for 12 months from date of receipt.
<b>Predicted Protein Size:</b>	54.1 kDa
<b>Gene Name:</b>	non-POU domain containing octamer binding
<b>Database Link:</b>	<a href="#">NP_031389</a> <a href="#">Entrez Gene 53610 Mouse</a> <a href="#">Entrez Gene 317259 Rat</a> <a href="#">Entrez Gene 612773 Dog</a> <a href="#">Entrez Gene 697263 Monkey</a> <a href="#">Entrez Gene 4841 Human</a> <a href="#">Q15233</a>
<b>Background:</b>	This gene encodes an RNA-binding protein which plays various roles in the nucleus, including transcriptional regulation and RNA splicing. A rearrangement between this gene and the transcription factor E3 gene has been observed in papillary renal cell carcinoma. Alternatively spliced transcript variants have been described. Pseudogenes exist on Chromosomes 2 and 16. [provided by RefSeq, Feb 2009]

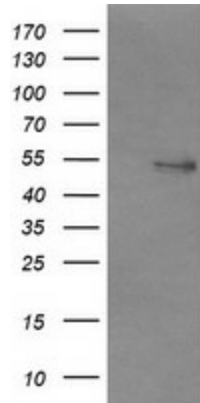


[View online »](#)

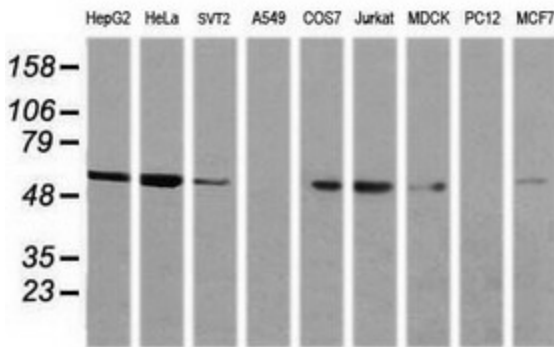
**Synonyms:** MRXS34; NMT55; NRB54; P54; P54NRB; PPP1R114

**Protein Families:** Druggable Genome, Transcription Factors

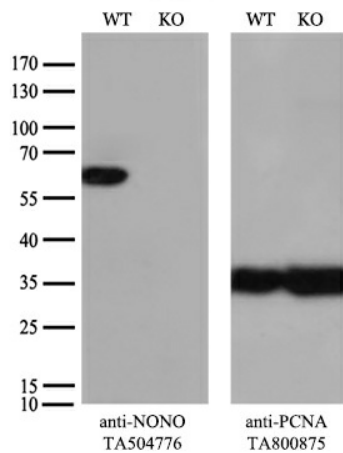
**Product images:**



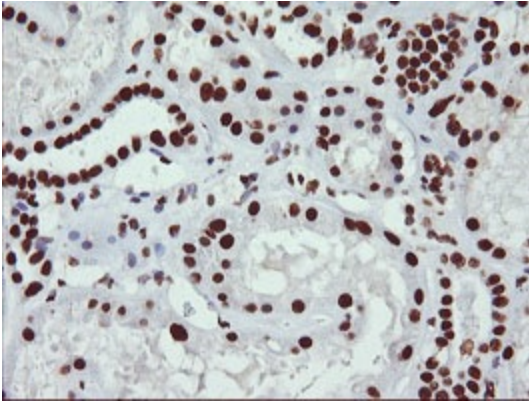
HEK293T cells were transfected with the pCMV6-ENTRY control (Left lane) or pCMV6-ENTRY NONO ([RC206688], Right lane) cDNA for 48 hrs and lysed. Equivalent amounts of cell lysates (5 ug per lane) were separated by SDS-PAGE and immunoblotted with anti-NONO. Positive lysates [LY402135] (100ug) and [LC402135] (20ug) can be purchased separately from OriGene.



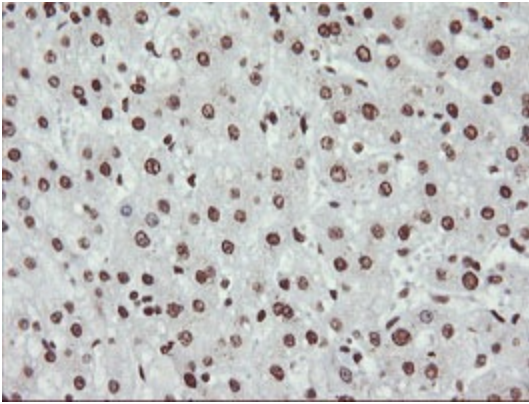
Western blot analysis of extracts (35ug) from 9 different cell lines by using anti-NONO monoclonal antibody (HepG2: human; HeLa: human; SVT2: mouse; A549: human; COS7: monkey; Jurkat: human; MDCK: canine; PC12: rat; MCF7: human).



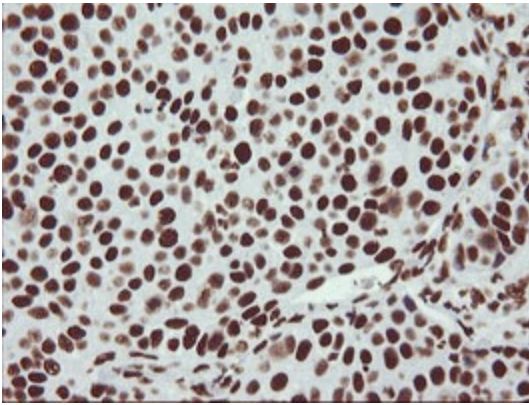
Equivalent amounts of cell lysates (10 ug per lane) of wild-type HEK293T cells (WT, Cat# LC810293T) and NONO-Knockout HEK293T cells (KO, Cat# [LC841199]) were separated by SDS-PAGE and immunoblotted with anti-NONO monoclonal antibody [TA504776] (1:500). Then the blotted membrane was stripped and reprobed with anti-PCNA antibody as a loading control.



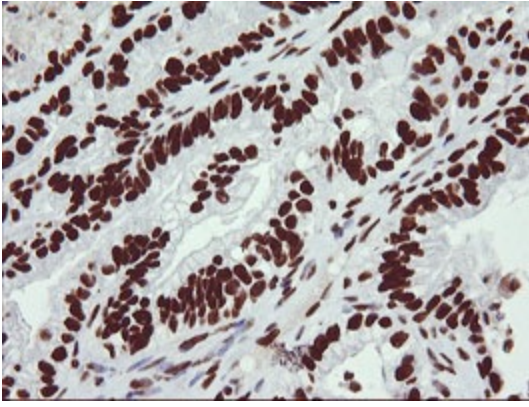
Immunohistochemical staining of paraffin-embedded Human Kidney tissue within the normal limits using anti-NONO mouse monoclonal antibody. (Heat-induced epitope retrieval by 10mM citric buffer, pH6.0, 120°C for 3min, [TA504776])



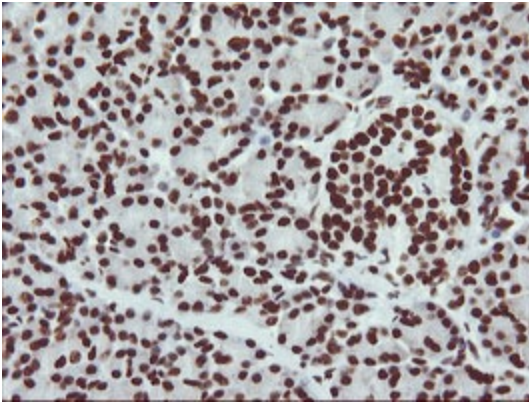
Immunohistochemical staining of paraffin-embedded Human liver tissue within the normal limits using anti-NONO mouse monoclonal antibody. (Heat-induced epitope retrieval by 10mM citric buffer, pH6.0, 120°C for 3min, [TA504776])



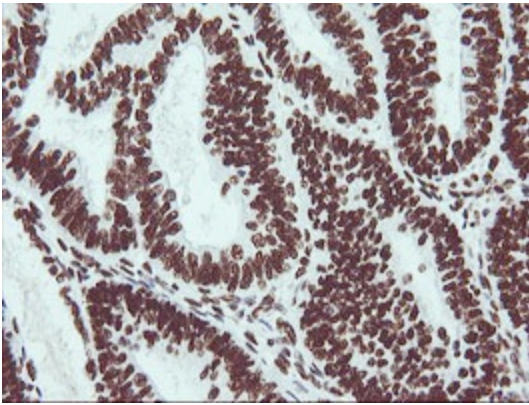
Immunohistochemical staining of paraffin-embedded Carcinoma of Human lung tissue using anti-NONO mouse monoclonal antibody. (Heat-induced epitope retrieval by 10mM citric buffer, pH6.0, 120°C for 3min, [TA504776])



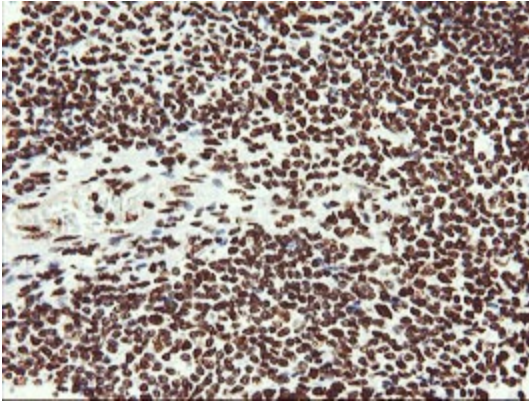
Immunohistochemical staining of paraffin-embedded Adenocarcinoma of Human ovary tissue using anti-NONO mouse monoclonal antibody. (Heat-induced epitope retrieval by 10mM citric buffer, pH6.0, 120°C for 3min, [TA504776])



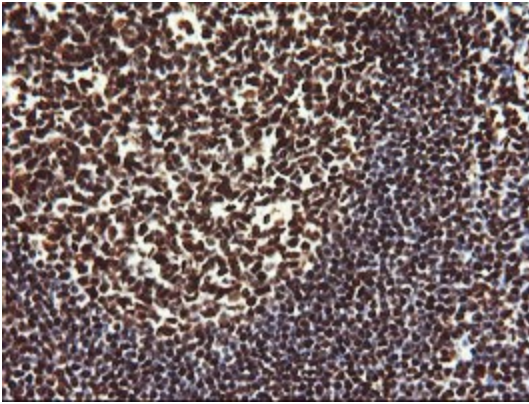
Immunohistochemical staining of paraffin-embedded Human pancreas tissue within the normal limits using anti-NONO mouse monoclonal antibody. (Heat-induced epitope retrieval by 10mM citric buffer, pH6.0, 120°C for 3min, [TA504776])



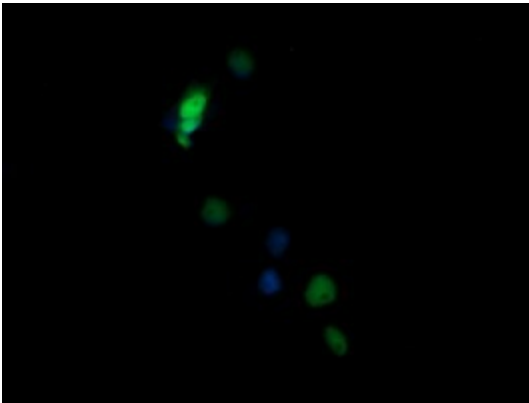
Immunohistochemical staining of paraffin-embedded Adenocarcinoma of Human endometrium tissue using anti-NONO mouse monoclonal antibody. (Heat-induced epitope retrieval by 10mM citric buffer, pH6.0, 120°C for 3min, [TA504776])



Immunohistochemical staining of paraffin-embedded Human lymphoma tissue using anti-NONO mouse monoclonal antibody. (Heat-induced epitope retrieval by 10mM citric buffer, pH6.0, 120°C for 3min, [TA504776])



Immunohistochemical staining of paraffin-embedded Human tonsil within the normal limits using anti-NONO mouse monoclonal antibody. (Heat-induced epitope retrieval by 10mM citric buffer, pH6.0, 120°C for 3min, [TA504776])



Anti-NONO mouse monoclonal antibody ([TA504776]) immunofluorescent staining of COS7 cells transiently transfected by pCMV6-ENTRY NONO ([RC206688]).