

Product datasheet for **TA504774AM**

CD31 (PECAM1) Mouse Monoclonal Antibody (Biotin conjugated) [Clone ID: OTI2C6]

Product data:

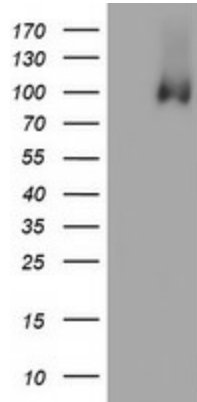
Product Type:	Primary Antibodies
Clone Name:	OTI2C6
Applications:	IHC, WB
Recommended Dilution:	WB 1:2000, IHC 1:150
Reactivity:	Human
Host:	Mouse
Isotype:	IgG2a
Clonality:	Monoclonal
Immunogen:	Full length human recombinant protein of human PECAM1(NP_000433) produced in HEK293T cell.
Formulation:	PBS (pH 7.3) containing 1% BSA, 50% glycerol and 0.02% sodium azide.
Concentration:	0.5 mg/ml
Purification:	Purified from mouse ascites fluids or tissue culture supernatant by affinity chromatography (protein A/G)
Conjugation:	Biotin
Storage:	Store at -20°C as received.
Stability:	Stable for 12 months from date of receipt.
Predicted Protein Size:	82.4 kDa
Gene Name:	platelet and endothelial cell adhesion molecule 1
Database Link:	NP_000433 Entrez Gene 5175 Human P16284
Background:	The protein encoded by this gene is found on the surface of platelets, monocytes, neutrophils, and some types of T-cells, and makes up a large portion of endothelial cell intercellular junctions. The encoded protein is a member of the immunoglobulin superfamily and is likely involved in leukocyte migration, angiogenesis, and integrin activation. [provided by RefSeq]



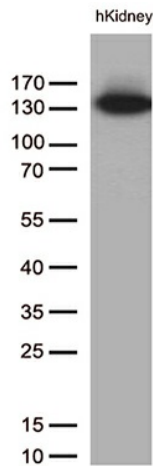
[View online »](#)

Synonyms: CD31; CD31/EndoCAM; endoCAM; GPIIA'; PECA1; PECAM-1
Protein Families: Druggable Genome, ES Cell Differentiation/IPS, Transmembrane
Protein Pathways: Cell adhesion molecules (CAMs), Leukocyte transendothelial migration

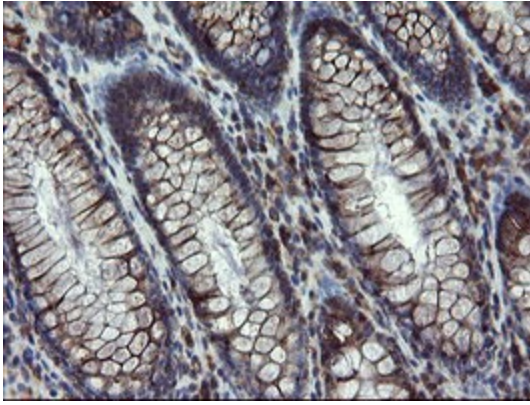
Product images:



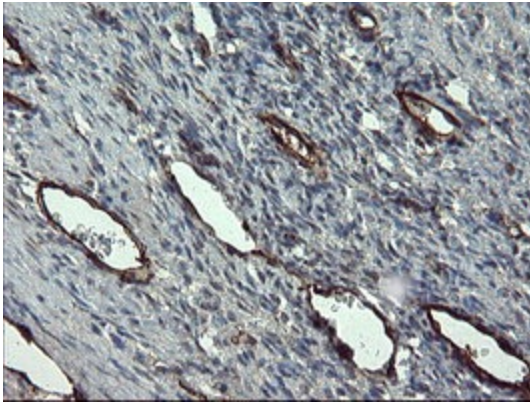
HEK293T cells were transfected with the pCMV6-ENTRY control (Left lane) or pCMV6-ENTRY PECAM1 ([RC208654], Right lane) cDNA for 48 hrs and lysed. Equivalent amounts of cell lysates (5 ug per lane) were separated by SDS-PAGE and immunoblotted with anti-PECAM1.



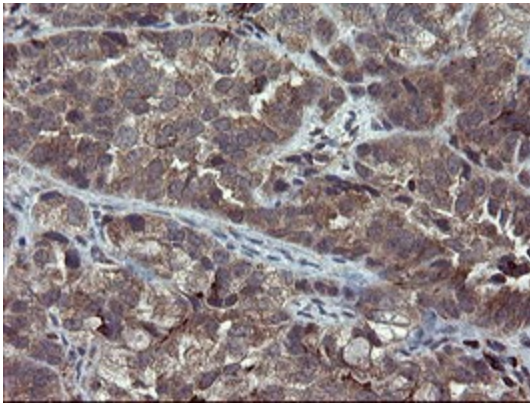
Western blot analysis of extracts (35ug) from human kidney tissue by using anti-PECAM1 monoclonal antibody. 1:500



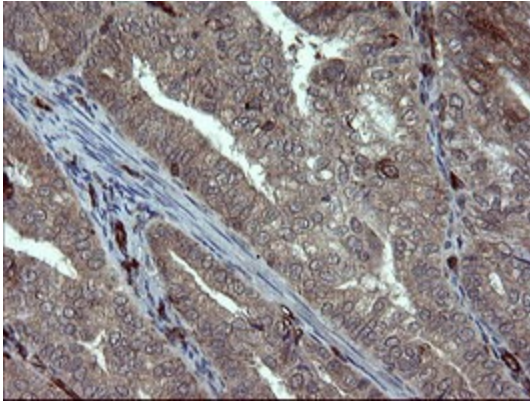
Immunohistochemical staining of paraffin-embedded Human colon tissue within the normal limits using anti-PECAM1 mouse monoclonal antibody. (Heat-induced epitope retrieval by 10mM citric buffer, pH6.0, 100°C for 10min, [TA504774])



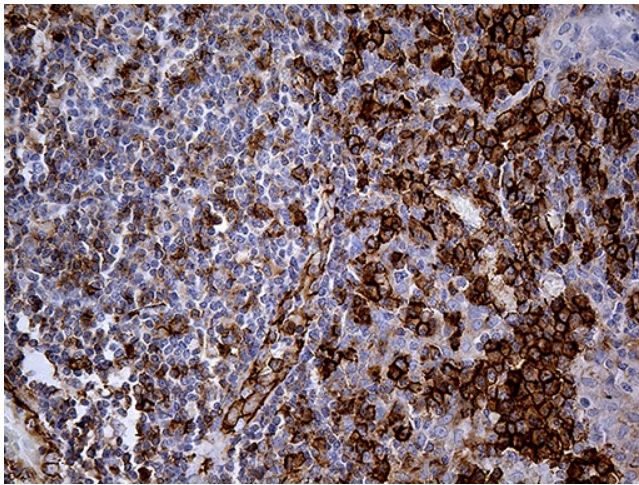
Immunohistochemical staining of paraffin-embedded Human Ovary tissue within the normal limits using anti-PECAM1 mouse monoclonal antibody. (Heat-induced epitope retrieval by 10mM citric buffer, pH6.0, 100°C for 10min, [TA504774])



Immunohistochemical staining of paraffin-embedded Adenocarcinoma of Human ovary tissue using anti-PECAM1 mouse monoclonal antibody. (Heat-induced epitope retrieval by 10mM citric buffer, pH6.0, 100°C for 10min, [TA504774])



Immunohistochemical staining of paraffin-embedded Adenocarcinoma of Human endometrium tissue using anti-PECAM1 mouse monoclonal antibody. (Heat-induced epitope retrieval by 10mM citric buffer, pH6.0, 100°C for 10min, [TA504774])



Immunohistochemical staining of paraffin-embedded Human tonsil within the normal limits using anti-PECAM1 mouse monoclonal antibody. (Heat-induced epitope retrieval by 1mM EDTA in 10mM Tris buffer (pH8.5) at 120°C for 3min, [TA504774])1:500