

## Product datasheet for **TA504772BM**

### **Mannose Phosphate Isomerase (MPI) Mouse Monoclonal Antibody (HRP conjugated) [Clone ID: OTI4G7]**

#### **Product data:**

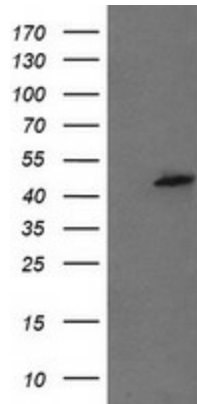
<b>Product Type:</b>	Primary Antibodies
<b>Clone Name:</b>	OTI4G7
<b>Applications:</b>	FC, IHC, WB
<b>Recommended Dilution:</b>	WB 1:1000, IHC 1:150, FLOW 1:100
<b>Reactivity:</b>	Human, Rat
<b>Host:</b>	Mouse
<b>Isotype:</b>	IgG1
<b>Clonality:</b>	Monoclonal
<b>Immunogen:</b>	Full length human recombinant protein of human MPI(NP_002426) produced in HEK293T cell.
<b>Formulation:</b>	PBS (pH 7.3) containing 1% BSA, 50% glycerol.
<b>Concentration:</b>	0.5 mg/ml
<b>Purification:</b>	Purified from mouse ascites fluids or tissue culture supernatant by affinity chromatography (protein A/G)
<b>Conjugation:</b>	HRP
<b>Storage:</b>	Store at -20°C as received.
<b>Stability:</b>	Stable for 12 months from date of receipt.
<b>Predicted Protein Size:</b>	46.5 kDa
<b>Gene Name:</b>	mannose phosphate isomerase
<b>Database Link:</b>	<a href="#">NP_002426</a> <a href="#">Entrez Gene 300741 RatEntrez Gene 4351 Human P34949</a>
<b>Background:</b>	Phosphomannose isomerase catalyzes the interconversion of fructose-6-phosphate and mannose-6-phosphate and plays a critical role in maintaining the supply of D-mannose derivatives, which are required for most glycosylation reactions. Mutations in the MPI gene were found in patients with carbohydrate-deficient glycoprotein syndrome, type Ib. [provided by RefSeq, Jul 2008]



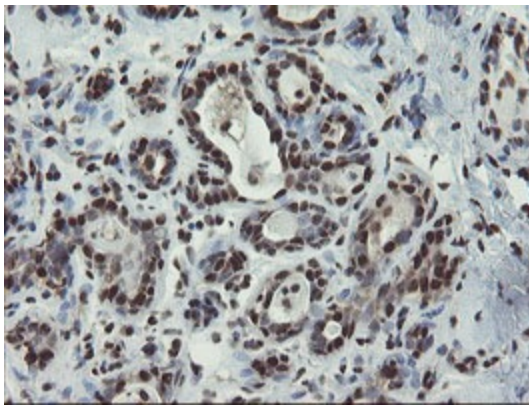
[View online »](#)

**Synonyms:** CDG1B; PMI; PMI1  
**Protein Families:** ES Cell Differentiation/IPS  
**Protein Pathways:** Amino sugar and nucleotide sugar metabolism, Fructose and mannose metabolism, Metabolic pathways

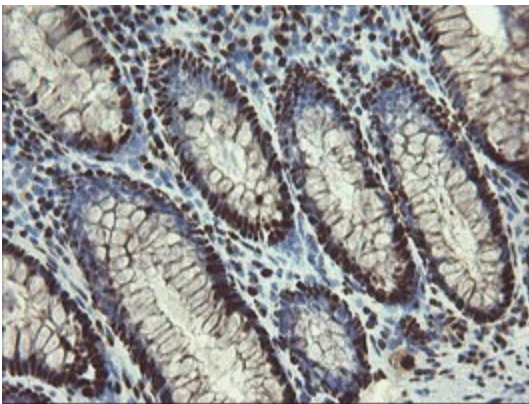
**Product images:**



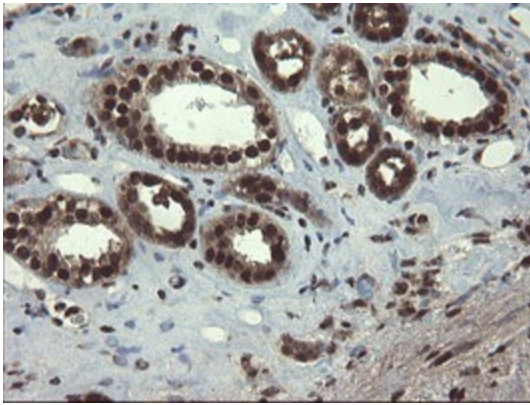
HEK293T cells were transfected with the pCMV6-ENTRY control (Left lane) or pCMV6-ENTRY MPI ([RC208134], Right lane) cDNA for 48 hrs and lysed. Equivalent amounts of cell lysates (5 ug per lane) were separated by SDS-PAGE and immunoblotted with anti-MPI. Positive lysates [LY419324] (100ug) and [LC419324] (20ug) can be purchased separately from OriGene.



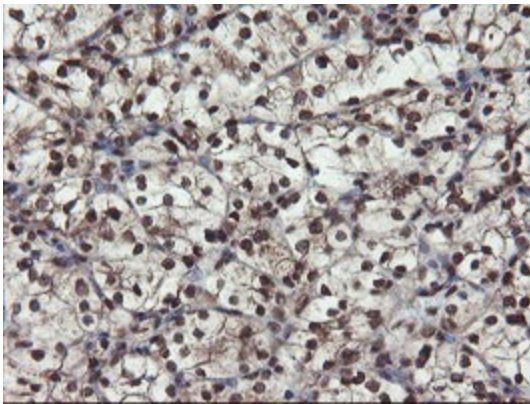
Immunohistochemical staining of paraffin-embedded Human breast tissue within the normal limits using anti-MPI mouse monoclonal antibody. (Heat-induced epitope retrieval by 10mM citric buffer, pH6.0, 120°C for 3min, [TA504772])



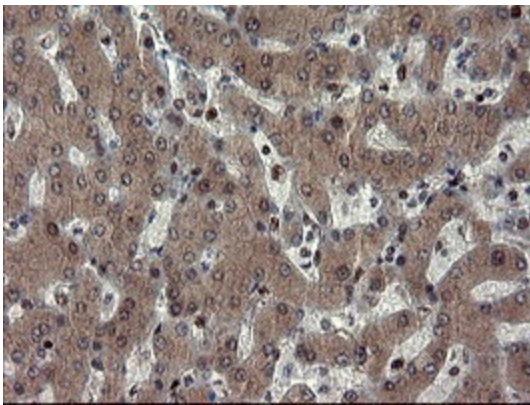
Immunohistochemical staining of paraffin-embedded Human colon tissue within the normal limits using anti-MPI mouse monoclonal antibody. (Heat-induced epitope retrieval by 10mM citric buffer, pH6.0, 120°C for 3min, [TA504772])



Immunohistochemical staining of paraffin-embedded Human Kidney tissue within the normal limits using anti-MPI mouse monoclonal antibody. (Heat-induced epitope retrieval by 10mM citric buffer, pH6.0, 120°C for 3min, [TA504772])

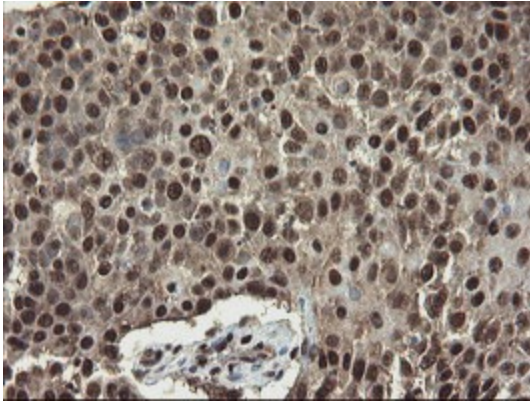


Immunohistochemical staining of paraffin-embedded Carcinoma of Human kidney tissue using anti-MPI mouse monoclonal antibody. (Heat-induced epitope retrieval by 10mM citric buffer, pH6.0, 120°C for 3min, [TA504772])

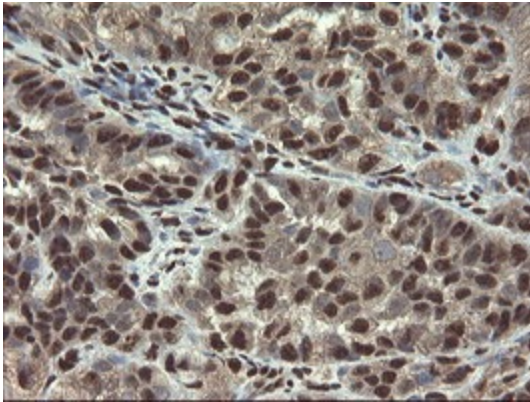


Immunohistochemical staining of paraffin-embedded Human liver tissue within the normal limits using anti-MPI mouse monoclonal antibody. (Heat-induced epitope retrieval by 10mM citric buffer, pH6.0, 120°C for 3min, [TA504772])

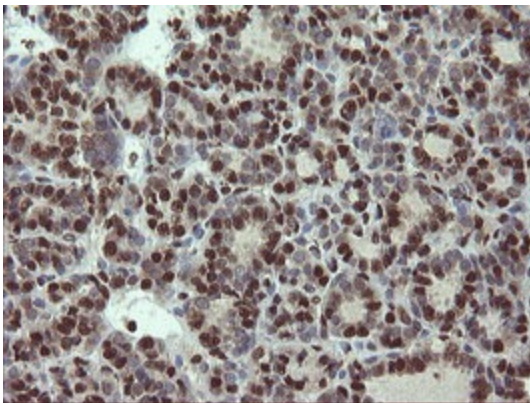




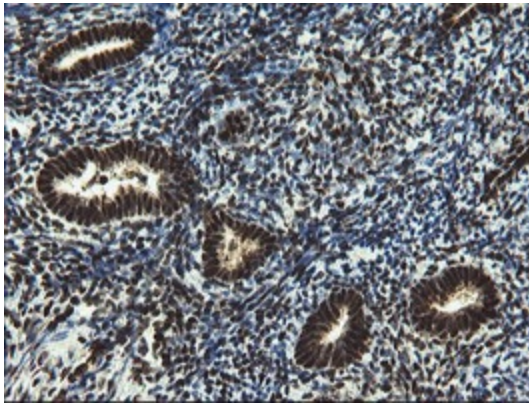
Immunohistochemical staining of paraffin-embedded Carcinoma of Human lung tissue using anti-MPI mouse monoclonal antibody. (Heat-induced epitope retrieval by 10mM citric buffer, pH6.0, 120°C for 3min, [TA504772])



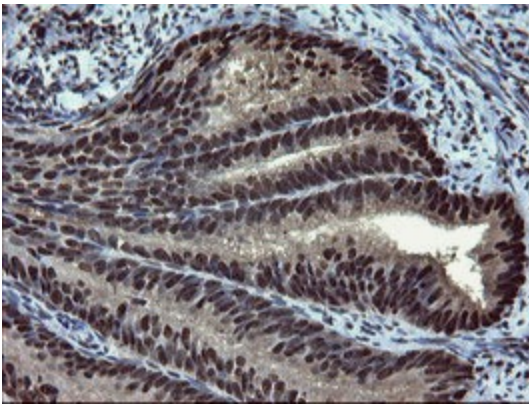
Immunohistochemical staining of paraffin-embedded Adenocarcinoma of Human ovary tissue using anti-MPI mouse monoclonal antibody. (Heat-induced epitope retrieval by 10mM citric buffer, pH6.0, 120°C for 3min, [TA504772])



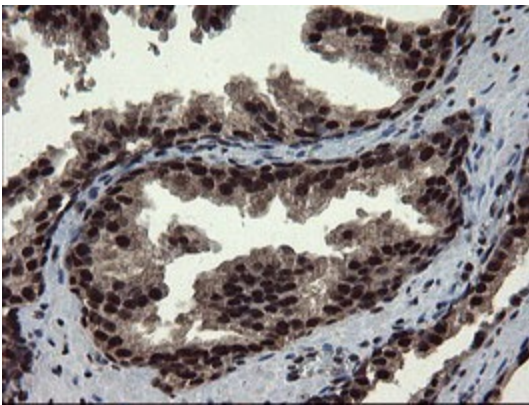
Immunohistochemical staining of paraffin-embedded Carcinoma of Human thyroid tissue using anti-MPI mouse monoclonal antibody. (Heat-induced epitope retrieval by 10mM citric buffer, pH6.0, 120°C for 3min, [TA504772])



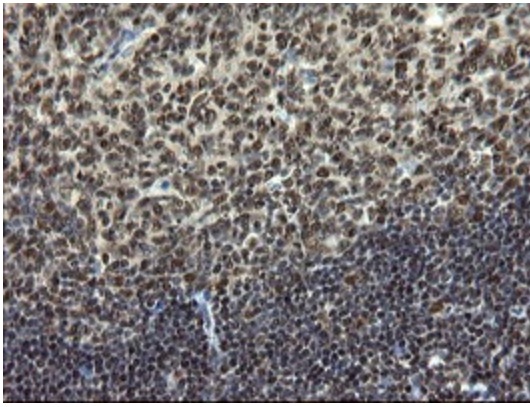
Immunohistochemical staining of paraffin-embedded Human endometrium tissue within the normal limits using anti-MPI mouse monoclonal antibody. (Heat-induced epitope retrieval by 10mM citric buffer, pH6.0, 120°C for 3min, [TA504772])



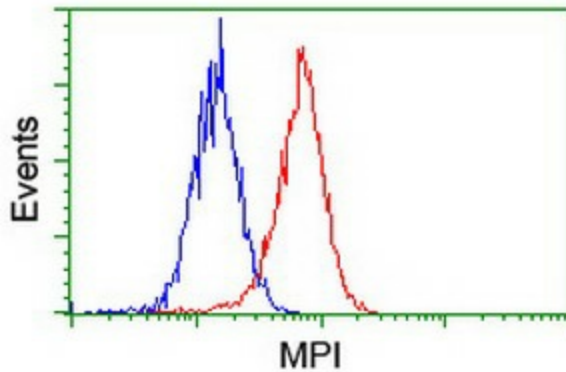
Immunohistochemical staining of paraffin-embedded Adenocarcinoma of Human endometrium tissue using anti-MPI mouse monoclonal antibody. (Heat-induced epitope retrieval by 10mM citric buffer, pH6.0, 120°C for 3min, [TA504772])



Immunohistochemical staining of paraffin-embedded Carcinoma of Human prostate tissue using anti-MPI mouse monoclonal antibody. (Heat-induced epitope retrieval by 10mM citric buffer, pH6.0, 120°C for 3min, [TA504772])



Immunohistochemical staining of paraffin-embedded Human tonsil within the normal limits using anti-MPI mouse monoclonal antibody. (Heat-induced epitope retrieval by 10mM citric buffer, pH6.0, 120°C for 3min, [TA504772])



Flow cytometric Analysis of HeLa cells, using anti-MPI antibody ([TA504772]), (Red), compared to a nonspecific negative control antibody, (Blue).