

## Product datasheet for **TA504771BM**

### **Mannose Phosphate Isomerase (MPI) Mouse Monoclonal Antibody (HRP conjugated) [Clone ID: OTI4A11]**

#### **Product data:**

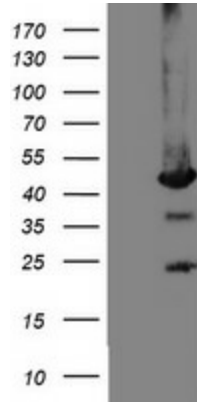
Product Type:	Primary Antibodies
Clone Name:	OTI4A11
Applications:	FC, WB
Recommended Dilution:	WB 1:2000, FLOW 1:100
Reactivity:	Human, Rat
Host:	Mouse
Isotype:	IgG1
Clonality:	Monoclonal
Immunogen:	Full length human recombinant protein of human MPI(NP_002426) produced in HEK293T cell.
Formulation:	PBS (pH 7.3) containing 1% BSA, 50% glycerol.
Concentration:	0.5 mg/ml
Purification:	Purified from mouse ascites fluids or tissue culture supernatant by affinity chromatography (protein A/G)
Conjugation:	HRP
Storage:	Store at -20°C as received.
Stability:	Stable for 12 months from date of receipt.
Predicted Protein Size:	46.5 kDa
Gene Name:	mannose phosphate isomerase
Database Link:	<a href="#">NP_002426</a> <a href="#">Entrez Gene 300741 Rat</a> <a href="#">Entrez Gene 4351 Human</a> <a href="#">P34949</a>
Background:	Phosphomannose isomerase catalyzes the interconversion of fructose-6-phosphate and mannose-6-phosphate and plays a critical role in maintaining the supply of D-mannose derivatives, which are required for most glycosylation reactions. Mutations in the MPI gene were found in patients with carbohydrate-deficient glycoprotein syndrome, type Ib. [provided by RefSeq]



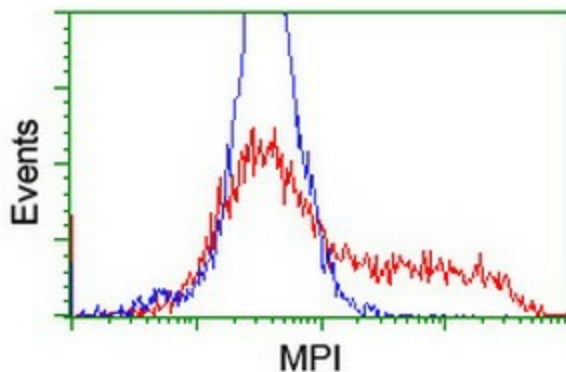
[View online »](#)

**Synonyms:** CDG1B; PMI; PMI1  
**Protein Families:** ES Cell Differentiation/IPS  
**Protein Pathways:** Amino sugar and nucleotide sugar metabolism, Fructose and mannose metabolism, Metabolic pathways

**Product images:**



HEK293T cells were transfected with the pCMV6-ENTRY control (Left lane) or pCMV6-ENTRY MPI ([RC208134], Right lane) cDNA for 48 hrs and lysed. Equivalent amounts of cell lysates (5 ug per lane) were separated by SDS-PAGE and immunoblotted with anti-MPI. Positive lysates [LY419324] (100ug) and [LC419324] (20ug) can be purchased separately from OriGene.



HEK293T cells transfected with either [RC208134] overexpress plasmid (Red) or empty vector control plasmid (Blue) were immunostained by anti-MPI antibody ([TA504771]), and then analyzed by flow cytometry.