

## Product datasheet for **TA504766BM**

### Myeloid leukemia factor 1 (MLF1) Mouse Monoclonal Antibody (HRP conjugated) [Clone ID: OTI2H10]

#### Product data:

Product Type:	Primary Antibodies
Clone Name:	OTI2H10
Applications:	FC, IF, WB
Recommended Dilution:	WB 1:2000, IF 1:100, FLOW 1:100
Reactivity:	Human
Host:	Mouse
Isotype:	IgG1
Clonality:	Monoclonal
Immunogen:	Full length human recombinant protein of human MLF1(NP_071888) produced in E.coli.
Formulation:	PBS (pH 7.3) containing 1% BSA, 50% glycerol.
Concentration:	0.5 mg/ml
Purification:	Purified from mouse ascites fluids or tissue culture supernatant by affinity chromatography (protein A/G)
Conjugation:	HRP
Storage:	Store at -20°C as received.
Stability:	Stable for 12 months from date of receipt.
Predicted Protein Size:	30.4 kDa
Gene Name:	myeloid leukemia factor 1
Database Link:	<a href="#">NP_071888</a> <a href="#">Entrez Gene 4291 Human P58340</a>
Background:	This gene encodes an oncoprotein which is thought to play a role in the phenotypic determination of hemopoetic cells. Translocations between this gene and nucleophosmin have been associated with myelodysplastic syndrome and acute myeloid leukemia. Multiple transcript variants encoding different isoforms have been found for this gene. [provided by RefSeq]

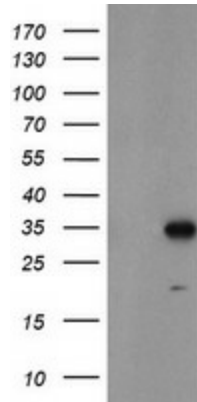


[View online »](#)

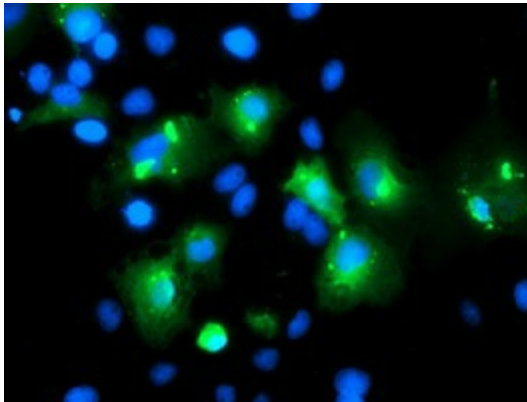
**Synonyms:** myeloid leukemia factor 1; myeloid leukemia factor 1 variant 1; myeloid leukemia factor 1 variant 2; myeloid leukemia factor 1 variant 3

**Protein Families:** Druggable Genome

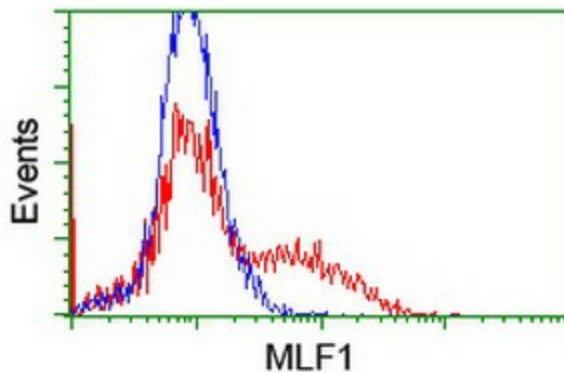
**Product images:**



HEK293T cells were transfected with the pCMV6-ENTRY control (Left lane) or pCMV6-ENTRY MLF1 ([RC202774], Right lane) cDNA for 48 hrs and lysed. Equivalent amounts of cell lysates (5 ug per lane) were separated by SDS-PAGE and immunoblotted with anti-MLF1. Positive lysates [LY411706] (100ug) and [LC411706] (20ug) can be purchased separately from OriGene.



Anti-MLF1 mouse monoclonal antibody ([TA504766]) immunofluorescent staining of COS7 cells transiently transfected by pCMV6-ENTRY MLF1 ([RC202774]).



HEK293T cells transfected with either [RC202774] overexpress plasmid (Red) or empty vector control plasmid (Blue) were immunostained by anti-MLF1 antibody ([TA504766]), and then analyzed by flow cytometry.