

## Product datasheet for **TA504761BM**

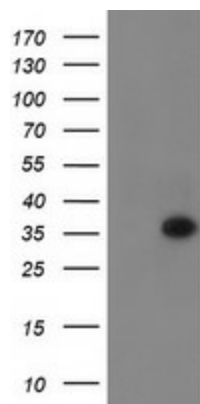
### **RYBP Mouse Monoclonal Antibody (HRP conjugated) [Clone ID: OTI4E10]**

#### **Product data:**

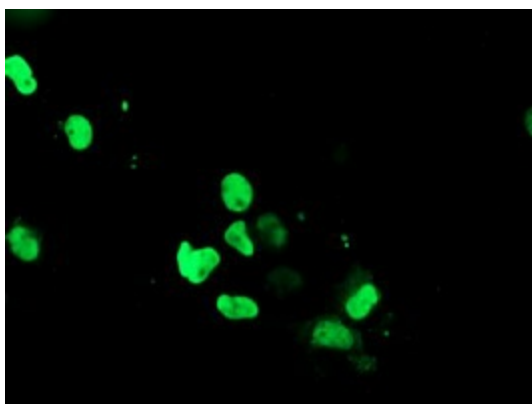
Product Type:	Primary Antibodies
Clone Name:	OTI4E10
Applications:	IF, WB
Recommended Dilution:	WB 1:2000, IF 1:100
Reactivity:	Human, Mouse
Host:	Mouse
Isotype:	IgG1
Clonality:	Monoclonal
Immunogen:	Full length human recombinant protein of human RYBP(NP_036366) produced in E.coli.
Formulation:	PBS (pH 7.3) containing 1% BSA, 50% glycerol.
Concentration:	0.5 mg/ml
Purification:	Purified from mouse ascites fluids or tissue culture supernatant by affinity chromatography (protein A/G)
Conjugation:	HRP
Storage:	Store at -20°C as received.
Stability:	Stable for 12 months from date of receipt.
Predicted Protein Size:	24.6 kDa
Gene Name:	RING1 and YY1 binding protein
Database Link:	<a href="#">NP_036366</a> <a href="#">Entrez Gene 56353 Mouse</a> <a href="#">Entrez Gene 23429 Human</a> <a href="#">Q8N488</a>
Synonyms:	AAP1; APAP-1; DEDAF; YEAF1
Protein Families:	Druggable Genome, Transcription Factors



[View online »](#)

**Product images:**

HEK293T cells were transfected with the pCMV6-ENTRY control (Left lane) or pCMV6-ENTRY RYBP ([RC206186], Right lane) cDNA for 48 hrs and lysed. Equivalent amounts of cell lysates (5 ug per lane) were separated by SDS-PAGE and immunoblotted with anti-RYBP. Positive lysates [LY415887] (100ug) and [LC415887] (20ug) can be purchased separately from OriGene.



Anti-RYBP mouse monoclonal antibody ([TA504761]) immunofluorescent staining of COS7 cells transiently transfected by pCMV6-ENTRY RYBP ([RC206186]).