

## Product datasheet for **TA504757**

### LGR6 Mouse Monoclonal Antibody [Clone ID: OTI2A3]

#### Product data:

Product Type:	Primary Antibodies
Clone Name:	OTI2A3
Applications:	IF, WB
Recommended Dilution:	WB 1:1000, IF 1:100
Reactivity:	Human, Mouse, Rat
Host:	Mouse
Isotype:	IgG1
Clonality:	Monoclonal
Immunogen:	Human recombinant protein fragment corresponding to amino acids 25-250 of human LGR6(NP_001017403) produced in HEK293T cell.
Formulation:	PBS (pH 7.3) containing 1% BSA, 50% glycerol and 0.02% sodium azide.
Concentration:	2.03 mg/ml
Purification:	Purified from mouse ascites fluids or tissue culture supernatant by affinity chromatography (protein A/G)
Conjugation:	Unconjugated
Storage:	Store at -20°C as received.
Stability:	Stable for 12 months from date of receipt.
Predicted Protein Size:	104.1 kDa
Gene Name:	leucine rich repeat containing G protein-coupled receptor 6
Database Link:	<a href="#">NP_001017403</a> <a href="#">Entrez Gene 329252 Mouse</a> <a href="#">Entrez Gene 498233 Rat</a> <a href="#">Entrez Gene 59352 Human</a> <a href="#">Q9HBX8</a>
Background:	This gene encodes a member of the leucine-rich repeat-containing subgroup of the G protein-coupled 7-transmembrane protein superfamily. The encoded protein is a glycoprotein hormone receptor with a large N-terminal extracellular domain that contains leucine-rich repeats important for the formation of a horseshoe-shaped interaction motif for ligand binding. Alternative splicing of this gene results in multiple transcript variants. [provided by RefSeq, Jul 2008]

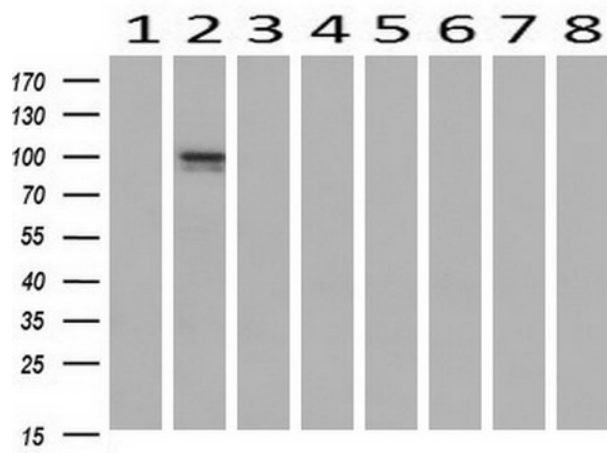


[View online »](#)

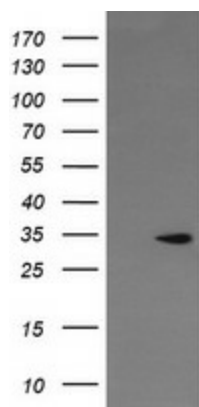
Synonyms: GPCR; VTS20631

Protein Families: Druggable Genome, Transmembrane

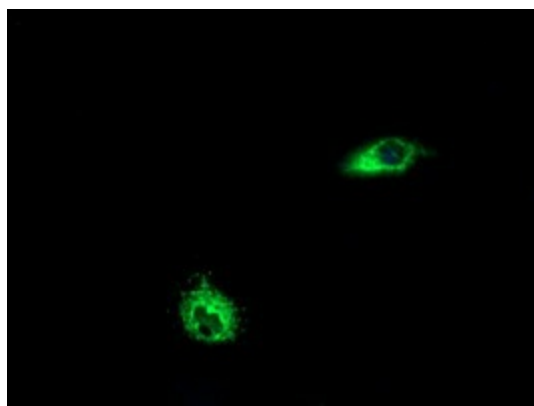
**Product images:**



Western blot analysis of extracts (10ug) from 8 Human tissue by using anti-LGR6 monoclonal antibody at 1:200 (1: Testis; 2: Uterus; 3: Breast; 4: Brain; 5: Liver; 6: Ovary; 7: Thyroid gland; 8: Colon).



HEK293T cells lysate (5 ug, left lane) and HEK293T cells lysate expressing human recombinant protein fragment (5 ug, right lane) corresponding to amino acids 25-250 of human LGR6 (NP\_001017403) were separated by SDS-PAGE and immunoblotted with anti-LGR6.



Anti-LGR6 mouse monoclonal antibody (TA504757) immunofluorescent staining of COS7 cells transiently transfected by pCMV6-ENTRY LGR6 ([RC219284]).