

Product datasheet for **TA504750AM**

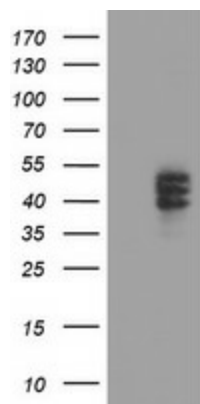
CPO Mouse Monoclonal Antibody (Biotin conjugated) [Clone ID: OTI1G3]

Product data:

Product Type:	Primary Antibodies
Clone Name:	OTI1G3
Applications:	WB
Recommended Dilution:	WB 1:1000
Reactivity:	Human
Host:	Mouse
Isotype:	IgG1
Clonality:	Monoclonal
Immunogen:	Full length human recombinant protein of human CPO(NP_775100) produced in HEK239T cell.
Formulation:	PBS (pH 7.3) containing 1% BSA, 50% glycerol and 0.02% sodium azide.
Concentration:	0.5 mg/ml
Purification:	Purified from mouse ascites fluids or tissue culture supernatant by affinity chromatography (protein A/G)
Conjugation:	Biotin
Storage:	Store at -20°C as received.
Stability:	Stable for 12 months from date of receipt.
Predicted Protein Size:	42.3 kDa
Gene Name:	carboxypeptidase O
Database Link:	NP_775100 Entrez Gene 130749 Human Q8IVL8
Background:	This gene is a member of the metallocarboxypeptidase gene family. [provided by RefSeq]
Synonyms:	MGC138281; MGC138283
Protein Families:	Druggable Genome, Protease, Secreted Protein



[View online »](#)

Product images:

HEK293T cells were transfected with the pCMV6-ENTRY control (Left lane) or pCMV6-ENTRY CPO ([RC211315], Right lane) cDNA for 48 hrs and lysed. Equivalent amounts of cell lysates (5 ug per lane) were separated by SDS-PAGE and immunoblotted with anti-CPO. Positive lysates [LY403542] (100ug) and [LC403542] (20ug) can be purchased separately from OriGene.