

Product datasheet for **TA504749**

Mannose Phosphate Isomerase (MPI) Mouse Monoclonal Antibody [Clone ID: OTI1C7]

Product data:

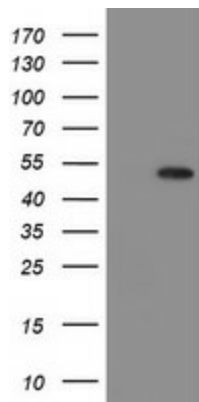
Product Type:	Primary Antibodies
Clone Name:	OTI1C7
Applications:	FC, IF, IHC, WB
Recommended Dilution:	WB 1:2000, IHC 1:150, IF 1:100, FLOW 1:100
Reactivity:	Human, Rat
Host:	Mouse
Isotype:	IgG1
Clonality:	Monoclonal
Immunogen:	Full length human recombinant protein of human MPI(NP_002426) produced in HEK293T cell.
Formulation:	PBS (pH 7.3) containing 1% BSA, 50% glycerol and 0.02% sodium azide.
Concentration:	1 mg/ml
Purification:	Purified from mouse ascites fluids or tissue culture supernatant by affinity chromatography (protein A/G)
Conjugation:	Unconjugated
Storage:	Store at -20°C as received.
Stability:	Stable for 12 months from date of receipt.
Predicted Protein Size:	46.5 kDa
Gene Name:	mannose phosphate isomerase
Database Link:	NP_002426 Entrez Gene 300741 Rat Entrez Gene 4351 Human P34949
Background:	Phosphomannose isomerase catalyzes the interconversion of fructose-6-phosphate and mannose-6-phosphate and plays a critical role in maintaining the supply of D-mannose derivatives, which are required for most glycosylation reactions. Mutations in the MPI gene were found in patients with carbohydrate-deficient glycoprotein syndrome, type Ib. [provided by RefSeq]
Synonyms:	CDG1B; PMI; PMI1


[View online »](#)

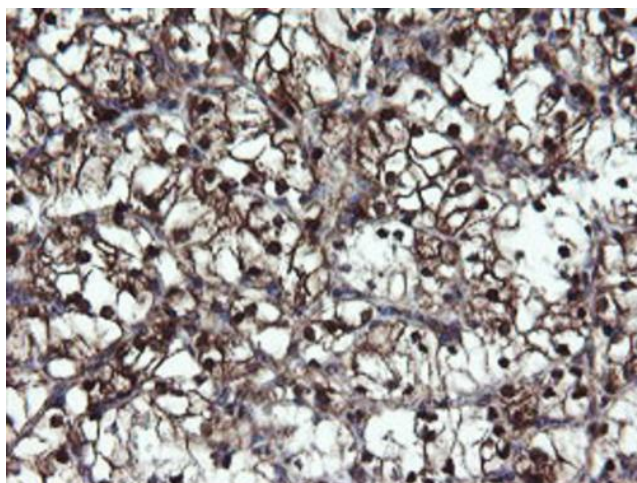
Protein Families: ES Cell Differentiation/IPS

Protein Pathways: Amino sugar and nucleotide sugar metabolism, Fructose and mannose metabolism, Metabolic pathways

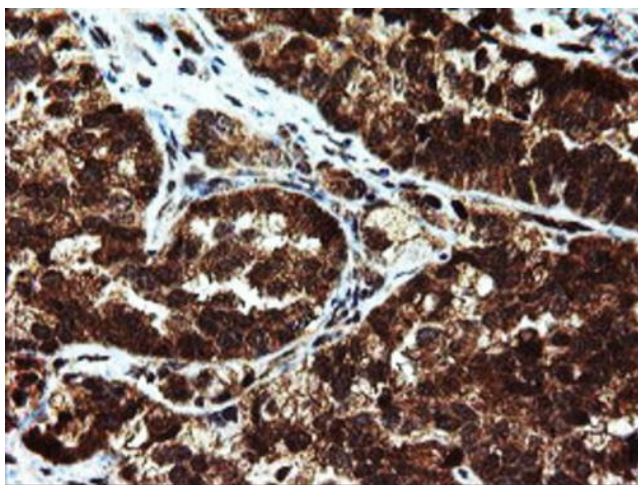
Product images:



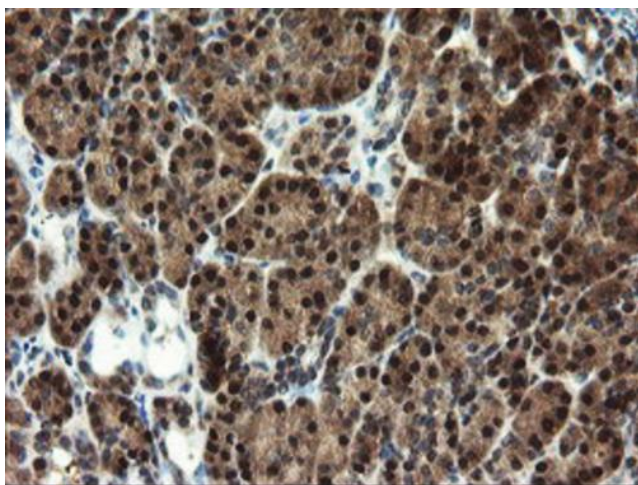
HEK293T cells were transfected with the pCMV6-ENTRY control (Cat# [PS100001], Left lane) or pCMV6-ENTRY MPI (Cat# [RC208134], Right lane) cDNA for 48 hrs and lysed. Equivalent amounts of cell lysates (5 ug per lane) were separated by SDS-PAGE and immunoblotted with anti-MPI (Cat# TA504749). Positive lysates [LY419324] (100ug) and [LC419324] (20ug) can be purchased separately from OriGene.



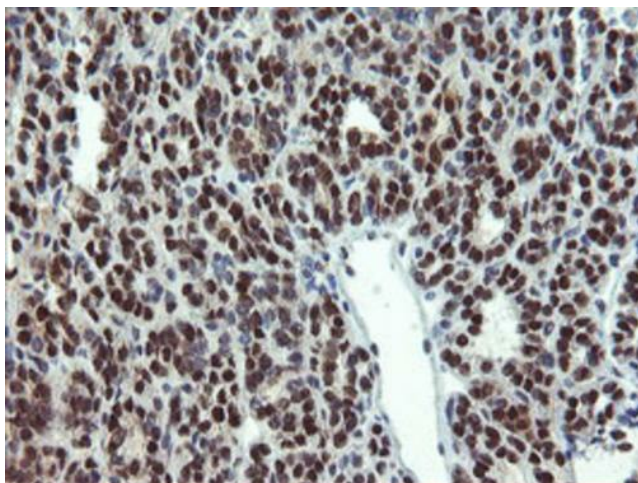
Immunohistochemical staining of paraffin-embedded Carcinoma of Human kidney tissue using anti-MPI mouse monoclonal antibody. Heat-induced epitope retrieval by EDTA solution buffer pH 8.0 at 120°C for 3 min.



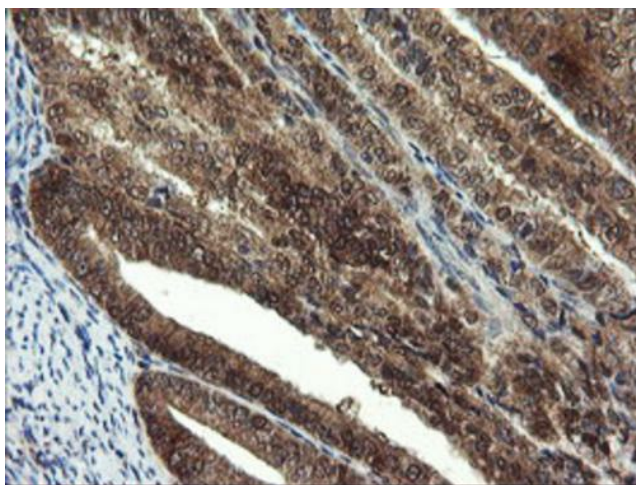
Immunohistochemical staining of paraffin-embedded Adenocarcinoma of Human ovary tissue using anti-MPI mouse monoclonal antibody. Heat-induced epitope retrieval by EDTA solution buffer pH 8.0 at 120°C for 3 min.



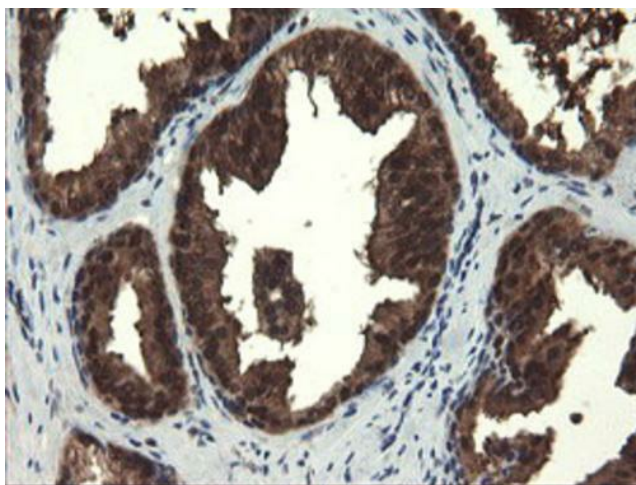
Immunohistochemical staining of paraffin-embedded Human pancreas tissue within the normal limits using anti-MPI mouse monoclonal antibody. Heat-induced epitope retrieval by EDTA solution buffer pH 8.0 at 120°C for 3 min.



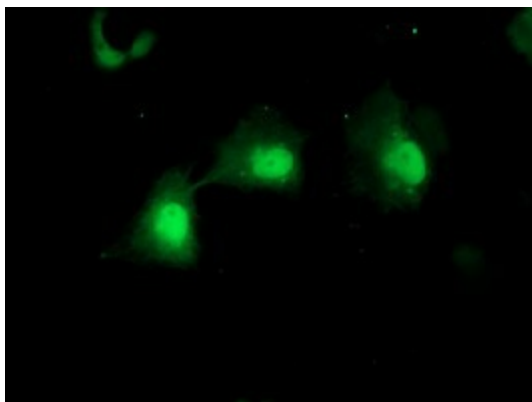
Immunohistochemical staining of paraffin-embedded Carcinoma of Human thyroid tissue using anti-MPI mouse monoclonal antibody. Heat-induced epitope retrieval by EDTA solution buffer pH 8.0 at 120°C for 3 min.



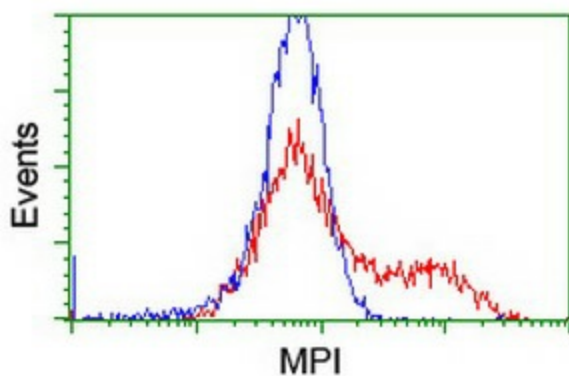
Immunohistochemical staining of paraffin-embedded Adenocarcinoma of Human endometrium tissue using anti-MPI mouse monoclonal antibody. Heat-induced epitope retrieval by EDTA solution buffer pH 8.0 at 120°C for 3 min.



Immunohistochemical staining of paraffin-embedded Human prostate tissue within the normal limits using anti-MPI mouse monoclonal antibody. Heat-induced epitope retrieval by EDTA solution buffer pH 8.0 at 120°C for 3 min.



Anti-MPI mouse monoclonal antibody (TA504749) immunofluorescent staining of COS7 cells transiently transfected by pCMV6-ENTRY MPI ([RC208134]).



HEK293T cells transfected with either [RC208134] overexpress plasmid (Red) or empty vector control plasmid (Blue) were immunostained by anti-MPI antibody (TA504749), and then analyzed by flow cytometry.