

Product datasheet for **TA504739**

Selenium Binding Protein 1 (SELENBP1) Mouse Monoclonal Antibody [Clone ID: OTI3C6]

Product data:

Product Type:	Primary Antibodies
Clone Name:	OTI3C6
Applications:	IHC, WB
Recommended Dilution:	WB 1:2000, IHC 1:150
Reactivity:	Human, Mouse, Rat
Host:	Mouse
Isotype:	IgG2a
Clonality:	Monoclonal
Immunogen:	Full length human recombinant protein of human SELENBP1 (NP_003935) produced in HEK293T cell.
Formulation:	PBS (PH 7.3) containing 1% BSA, 50% glycerol and 0.02% sodium azide.
Concentration:	1 mg/ml
Purification:	Purified from mouse ascites fluids or tissue culture supernatant by affinity chromatography (protein A/G)
Conjugation:	Unconjugated
Storage:	Store at -20°C as received.
Stability:	Stable for 12 months from date of receipt.
Predicted Protein Size:	52.2 kDa
Gene Name:	selenium binding protein 1
Database Link:	NP_003935 Entrez Gene 20341 Mouse Entrez Gene 140927 Rat Entrez Gene 8991 Human Q13228



[View online »](#)

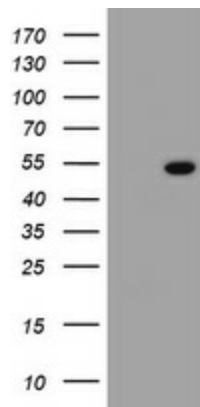
Background:

This gene encodes a member of the selenium-binding protein family. Selenium is an essential nutrient that exhibits potent anticarcinogenic properties, and deficiency of selenium may cause certain neurologic diseases. The effects of selenium in preventing cancer and neurologic diseases may be mediated by selenium-binding proteins, and decreased expression of this gene may be associated with several types of cancer. The encoded protein may play a selenium-dependent role in ubiquitination/deubiquitination-mediated protein degradation. Alternatively spliced transcript variants encoding multiple isoforms have been observed for this gene. [provided by RefSeq, Apr 2012]

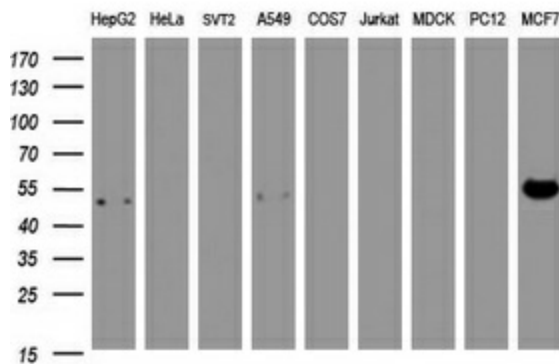
Synonyms:

HEL-S-134P; hSBP; LPSB; SBP56; SP56

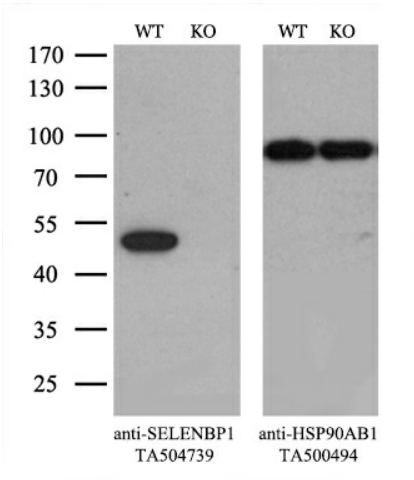
Product images:



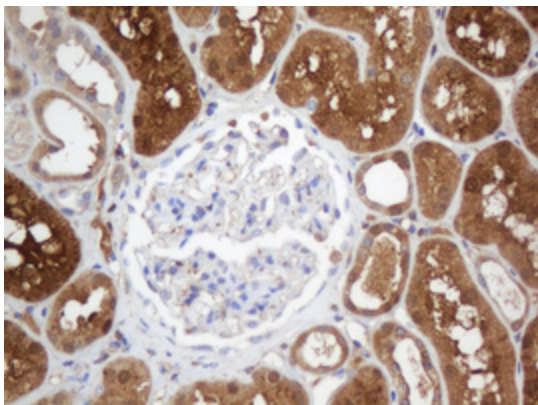
HEK293T cells were transfected with the pCMV6-ENTRY control (Left lane) or pCMV6-ENTRY SELENBP1 ([RC202108], Right lane) cDNA for 48 hrs and lysed. Equivalent amounts of cell lysates (5 ug per lane) were separated by SDS-PAGE and immunoblotted with anti-SELENBP1. Positive lysates [LY401295] (100ug) and [LC401295] (20ug) can be purchased separately from OriGene.



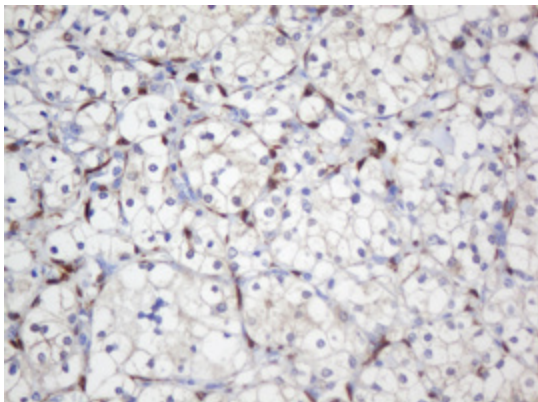
Western blot analysis of extracts (35ug) from 9 different cell lines by using anti-SELENBP1 monoclonal antibody (HepG2: human; HeLa: human; SVT2: mouse; A549: human; COS7: monkey; Jurkat: human; MDCK: canine; PC12: rat; MCF7: human).



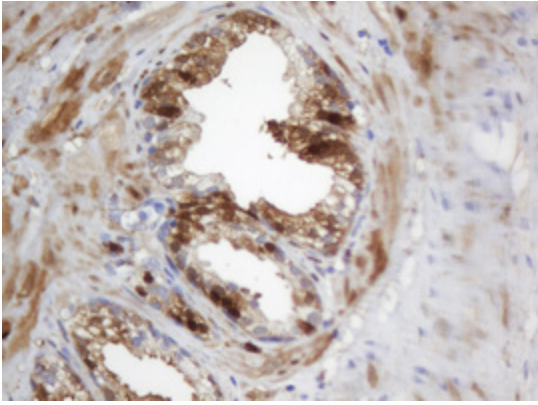
Equivalent amounts of cell lysates (10 ug per lane) of wild-type HeLa cells (WT, Cat# LC810HELA) and SELENBP1-Knockout HeLa cells (KO, Cat# [LC812268]) were separated by SDS-PAGE and immunoblotted with anti-SELENBP1 monoclonal antibody TA504739, (1:200). Then the blotted membrane was stripped and reprobed with anti-HSP90AB1 antibody ([TA500494]) as a loading control.



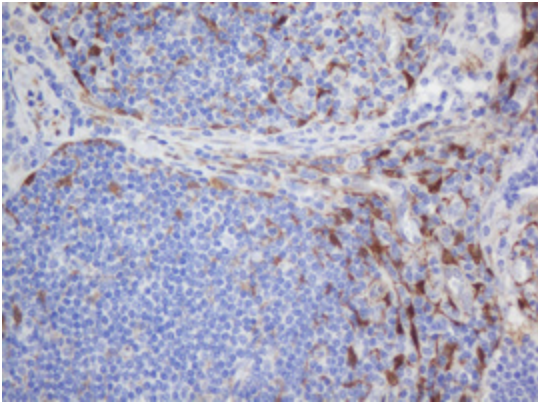
Immunohistochemical staining of paraffin-embedded Human Kidney tissue within the normal limits using anti-SELENBP1 mouse monoclonal antibody. (Heat-induced epitope retrieval by 10mM citric buffer, pH6.0, 120°C for 3min, TA504739)



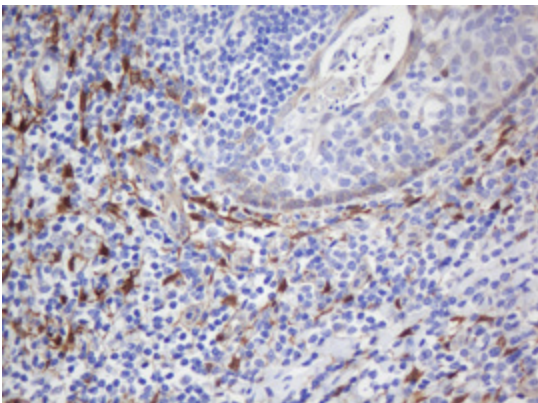
Immunohistochemical staining of paraffin-embedded Carcinoma of Human kidney tissue using anti-SELENBP1 mouse monoclonal antibody. (Heat-induced epitope retrieval by 10mM citric buffer, pH6.0, 120°C for 3min, TA504739)



Immunohistochemical staining of paraffin-embedded Carcinoma of Human prostate tissue using anti-SELENBP1 mouse monoclonal antibody. (Heat-induced epitope retrieval by 10mM citric buffer, pH6.0, 120°C for 3min, TA504739)



Immunohistochemical staining of paraffin-embedded Human lymph node tissue within the normal limits using anti-SELENBP1 mouse monoclonal antibody. (Heat-induced epitope retrieval by 10mM citric buffer, pH6.0, 120°C for 3min, TA504739)



Immunohistochemical staining of paraffin-embedded Human tonsil within the normal limits using anti-SELENBP1 mouse monoclonal antibody. (Heat-induced epitope retrieval by 10mM citric buffer, pH6.0, 120°C for 3min, TA504739)