

## Product datasheet for **TA504735S**

### TBCC Mouse Monoclonal Antibody [Clone ID: OTI4C4]

#### Product data:

Product Type:	Primary Antibodies
Clone Name:	OTI4C4
Applications:	IF, IHC, WB
Recommended Dilution:	WB 1:500~2000, IHC 1:150, IF 1:100
Reactivity:	Human, Rat, Monkey, Mouse
Host:	Mouse
Isotype:	IgG1
Clonality:	Monoclonal
Immunogen:	Full length human recombinant protein of human TBCC(NP_003183) produced in HEK293T cell.
Formulation:	PBS (pH 7.3) containing 1% BSA, 50% glycerol and 0.02% sodium azide.
Concentration:	1 mg/ml
Purification:	Purified from mouse ascites fluids or tissue culture supernatant by affinity chromatography (protein A/G)
Conjugation:	Unconjugated
Storage:	Store at -20°C as received.
Stability:	Stable for 12 months from date of receipt.
Predicted Protein Size:	39 kDa
Gene Name:	tubulin folding cofactor C
Database Link:	<a href="#">NP_003183</a> <a href="#">Entrez Gene 72726 Mouse</a> <a href="#">Entrez Gene 316221 Rat</a> <a href="#">Entrez Gene 696997 Monkey</a> <a href="#">Entrez Gene 6903 Human</a> <a href="#">Q15814</a>



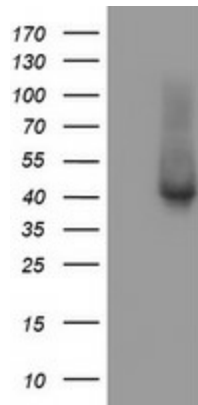
[View online »](#)

**Background:**

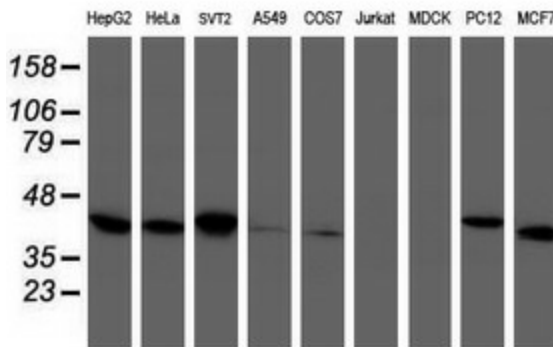
Cofactor C is one of four proteins (cofactors A, D, E, and C) involved in the pathway leading to correctly folded beta-tubulin from folding intermediates. Cofactors A and D are believed to play a role in capturing and stabilizing beta-tubulin intermediates in a quasi-native confirmation. Cofactor E binds to the cofactor D/beta-tubulin complex; interaction with cofactor C then causes the release of beta-tubulin polypeptides that are committed to the native state. [provided by RefSeq]

**Synonyms:**

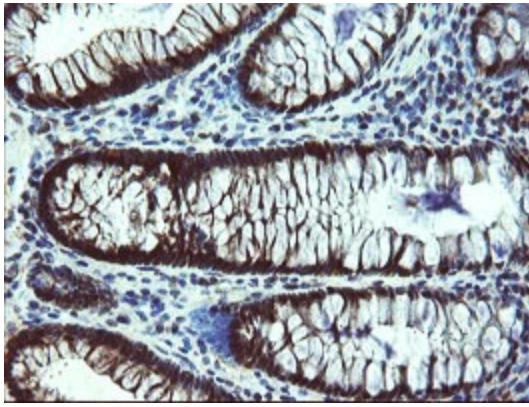
CFC

**Product images:**


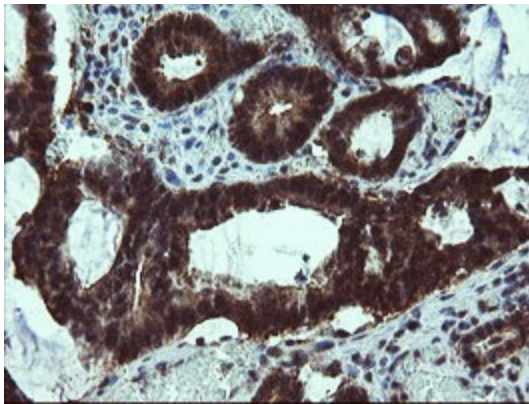
HEK293T cells were transfected with the pCMV6-ENTRY control (Cat# [PS100001], Left lane) or pCMV6-ENTRY TBCC (Cat# [RC203563], Right lane) cDNA for 48 hrs and lysed. Equivalent amounts of cell lysates (5 ug per lane) were separated by SDS-PAGE and immunoblotted with anti-TBCC (Cat# [TA504735]). Positive lysates [LY418844] (100ug) and [LC418844] (20ug) can be purchased separately from OriGene.



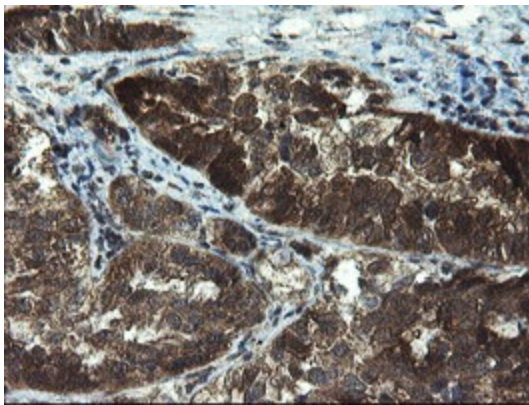
Western blot analysis of extracts (35ug) from 9 different cell lines by using anti-TBCC monoclonal antibody (HepG2: human; HeLa: human; SVT2: mouse; A549: human; COS7: monkey; Jurkat: human; MDCK: canine; PC12: rat; MCF7: human).



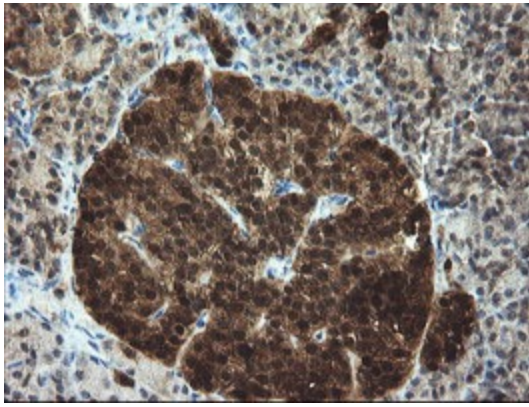
Immunohistochemical staining of paraffin-embedded Human colon tissue within the normal limits using anti-TBCC mouse monoclonal antibody. (Heat-induced epitope retrieval by 10mM citric buffer, pH6.0, 100°C for 10min, [TA504735])



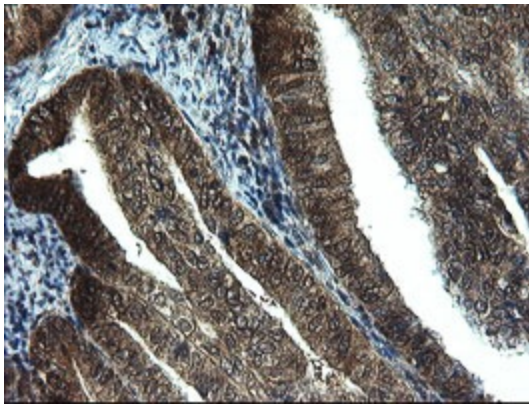
Immunohistochemical staining of paraffin-embedded Adenocarcinoma of Human colon tissue using anti-TBCC mouse monoclonal antibody. (Heat-induced epitope retrieval by 10mM citric buffer, pH6.0, 100°C for 10min, [TA504735])



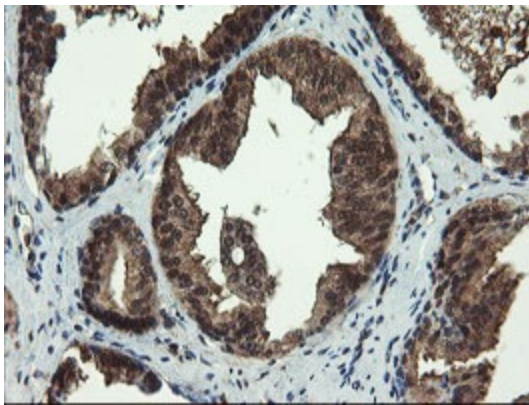
Immunohistochemical staining of paraffin-embedded Adenocarcinoma of Human ovary tissue using anti-TBCC mouse monoclonal antibody. (Heat-induced epitope retrieval by 10mM citric buffer, pH6.0, 100°C for 10min, [TA504735])



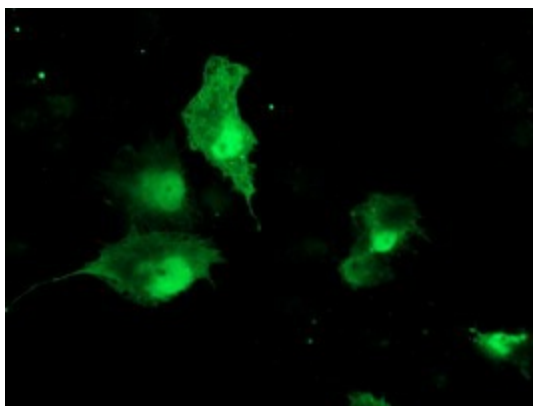
Immunohistochemical staining of paraffin-embedded Human pancreas tissue within the normal limits using anti-TBCC mouse monoclonal antibody. (Heat-induced epitope retrieval by 10mM citric buffer, pH6.0, 100°C for 10min, [TA504735])



Immunohistochemical staining of paraffin-embedded Adenocarcinoma of Human endometrium tissue using anti-TBCC mouse monoclonal antibody. (Heat-induced epitope retrieval by 10mM citric buffer, pH6.0, 100°C for 10min, [TA504735])



Immunohistochemical staining of paraffin-embedded Human prostate tissue within the normal limits using anti-TBCC mouse monoclonal antibody. (Heat-induced epitope retrieval by 10mM citric buffer, pH6.0, 100°C for 10min, [TA504735])



Anti-TBCC mouse monoclonal antibody ([TA504735]) immunofluorescent staining of COS7 cells transiently transfected by pCMV6-ENTRY TBCC ([RC203563]).