

## Product datasheet for **TA504732M**

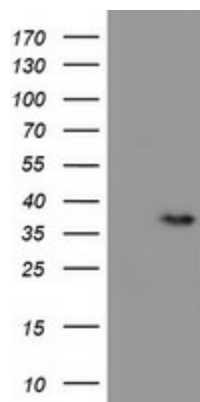
### RFPL3 Mouse Monoclonal Antibody [Clone ID: OTI2B6]

#### Product data:

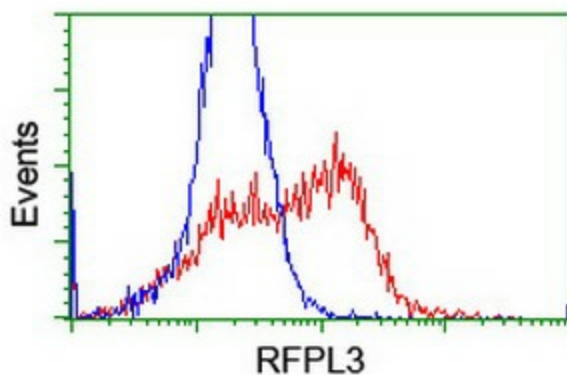
Product Type:	Primary Antibodies
Clone Name:	OTI2B6
Applications:	FC, WB
Recommended Dilution:	WB 1:1000, FLOW 1:100
Reactivity:	Human
Host:	Mouse
Isotype:	IgG1
Clonality:	Monoclonal
Immunogen:	Full length human recombinant protein of human RFPL3(NP_006595) produced in HEK293T cell.
Formulation:	PBS (pH 7.3) containing 1% BSA, 50% glycerol and 0.02% sodium azide.
Concentration:	0.96 mg/ml
Purification:	Purified from mouse ascites fluids or tissue culture supernatant by affinity chromatography (protein A/G)
Conjugation:	Unconjugated
Storage:	Store at -20°C as received.
Stability:	Stable for 12 months from date of receipt.
Predicted Protein Size:	32 kDa
Gene Name:	ret finger protein like 3
Database Link:	<a href="#">NP_006595</a> <a href="#">Entrez Gene 10738 Human</a> <a href="#">O75679</a>
Synonyms:	RNF120
Protein Families:	Druggable Genome

[View online »](#)

## Product images:



HEK293T cells were transfected with the pCMV6-ENTRY control (Left lane) or pCMV6-ENTRY RFPL3 ([RC206518], Right lane) cDNA for 48 hrs and lysed. Equivalent amounts of cell lysates (5 ug per lane) were separated by SDS-PAGE and immunoblotted with anti-RFPL3. Positive lysates [LY416536] (100ug) and [LC416536] (20ug) can be purchased separately from OriGene.



HEK293T cells transfected with either [RC206518] overexpress plasmid (Red) or empty vector control plasmid (Blue) were immunostained by anti-RFPL3 antibody ([TA504732]), and then analyzed by flow cytometry.