

## Product datasheet for **TA504731AM**

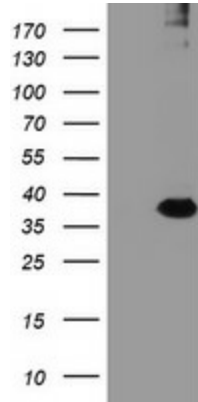
### RFPL3 Mouse Monoclonal Antibody (Biotin conjugated) [Clone ID: OTI2G4]

#### Product data:

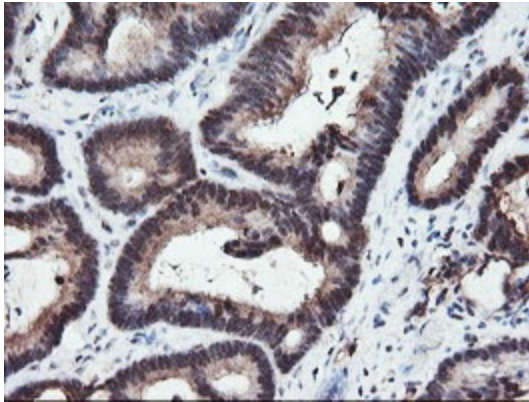
Product Type:	Primary Antibodies
Clone Name:	OTI2G4
Applications:	FC, IF, IHC, WB
Recommended Dilution:	WB 1:2000, IHC 1:150, IF 1:100, FLOW 1:100
Reactivity:	Human
Host:	Mouse
Isotype:	IgG2b
Clonality:	Monoclonal
Immunogen:	Full length human recombinant protein of human RFPL3(NP_006595) produced in HEK293T cell.
Formulation:	PBS (pH 7.3) containing 1% BSA, 50% glycerol and 0.02% sodium azide.
Concentration:	0.5 mg/ml
Purification:	Purified from mouse ascites fluids or tissue culture supernatant by affinity chromatography (protein A/G)
Conjugation:	Biotin
Storage:	Store at -20°C as received.
Stability:	Stable for 12 months from date of receipt.
Predicted Protein Size:	32 kDa
Gene Name:	ret finger protein like 3
Database Link:	<a href="#">NP_006595</a> <a href="#">Entrez Gene 10738 Human</a> <a href="#">O75679</a>
Synonyms:	RNF120
Protein Families:	Druggable Genome



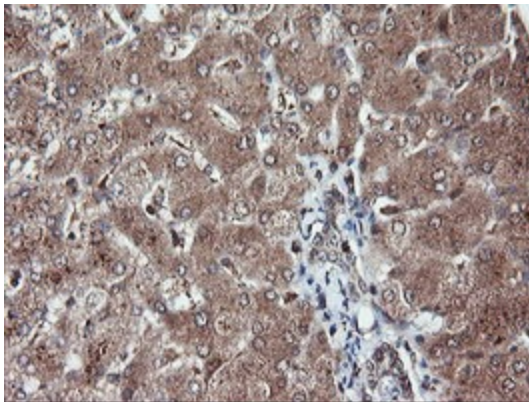
[View online »](#)

**Product images:**

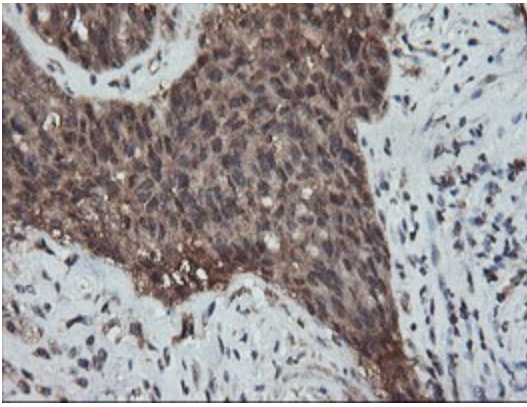
HEK293T cells were transfected with the pCMV6-ENTRY control (Cat# [PS100001], Left lane) or pCMV6-ENTRY RFPL3 (Cat# [RC206518], Right lane) cDNA for 48 hrs and lysed. Equivalent amounts of cell lysates (5 ug per lane) were separated by SDS-PAGE and immunoblotted with anti-RFPL3 (Cat# [TA504731]). Positive lysates [LY416536] (100ug) and [LC416536] (20ug) can be purchased separately from OriGene.



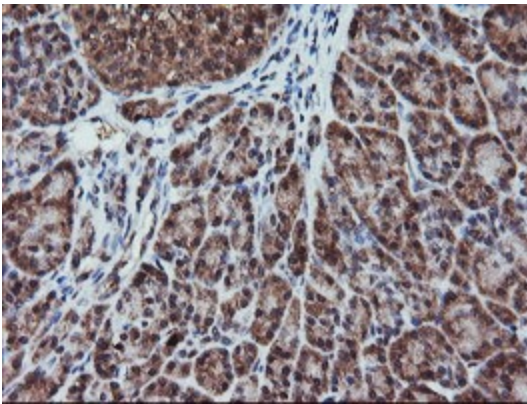
Immunohistochemical staining of paraffin-embedded Adenocarcinoma of Human colon tissue using anti-RFPL3 mouse monoclonal antibody. (Heat-induced epitope retrieval by 10mM citric buffer, pH6.0, 100°C for 10min, [TA504731])



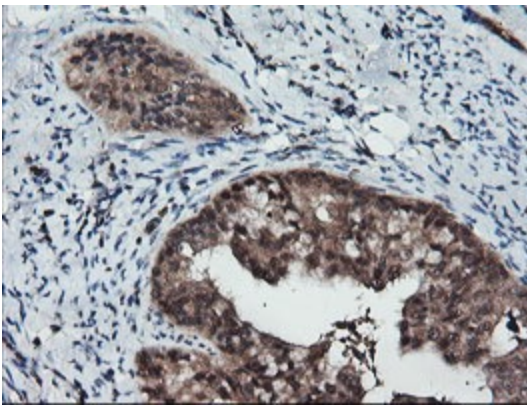
Immunohistochemical staining of paraffin-embedded Human liver tissue within the normal limits using anti-RFPL3 mouse monoclonal antibody. (Heat-induced epitope retrieval by 10mM citric buffer, pH6.0, 100°C for 10min, [TA504731])



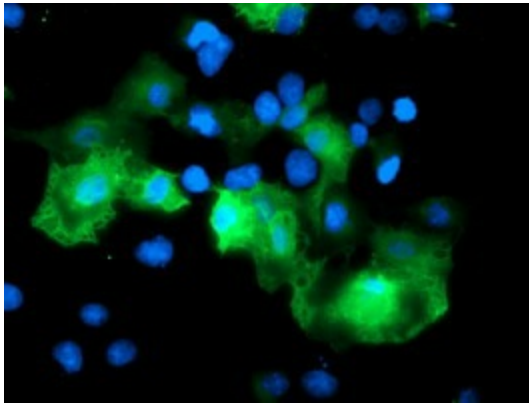
Immunohistochemical staining of paraffin-embedded Adenocarcinoma of Human ovary tissue using anti-RFPL3 mouse monoclonal antibody. (Heat-induced epitope retrieval by 10mM citric buffer, pH6.0, 100°C for 10min, [TA504731])



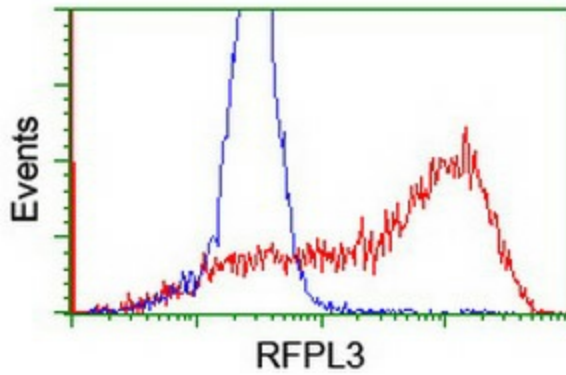
Immunohistochemical staining of paraffin-embedded Human pancreas tissue within the normal limits using anti-RFPL3 mouse monoclonal antibody. (Heat-induced epitope retrieval by 10mM citric buffer, pH6.0, 100°C for 10min, [TA504731])



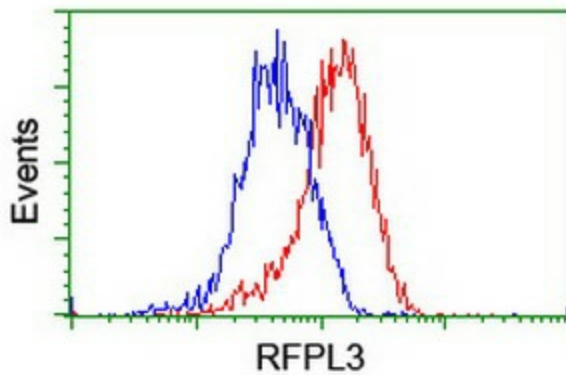
Immunohistochemical staining of paraffin-embedded Adenocarcinoma of Human endometrium tissue using anti-RFPL3 mouse monoclonal antibody. (Heat-induced epitope retrieval by 10mM citric buffer, pH6.0, 100°C for 10min, [TA504731])



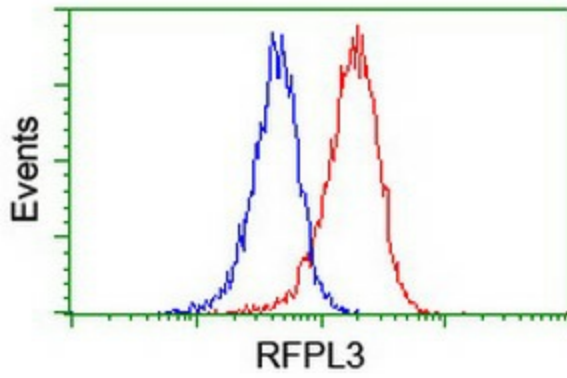
Anti-RFPL3 mouse monoclonal antibody ([TA504731]) immunofluorescent staining of COS7 cells transiently transfected by pCMV6-ENTRY RFPL3 ([RC206518]).



HEK293T cells transfected with either [RC206518] overexpress plasmid (Red) or empty vector control plasmid (Blue) were immunostained by anti-RFPL3 antibody ([TA504731]), and then analyzed by flow cytometry.



Flow cytometric Analysis of HeLa cells, using anti-RFPL3 antibody ([TA504731]), (Red), compared to a nonspecific negative control antibody, (Blue).



Flow cytometric Analysis of Jurkat cells, using anti-RFPL3 antibody ([TA504731]), (Red), compared to a nonspecific negative control antibody, (Blue).