

Product datasheet for **TA504730AM**

TDO2 Mouse Monoclonal Antibody (Biotin conjugated) [Clone ID: OTI4G2]

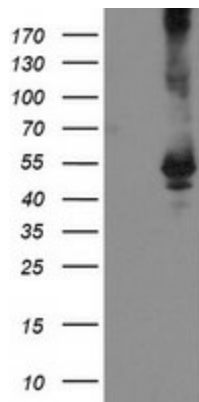
Product data:

Product Type:	Primary Antibodies
Clone Name:	OTI4G2
Applications:	IHC, WB
Recommended Dilution:	WB 1:2000, IHC 1:150
Reactivity:	Human, Mouse, Rat
Host:	Mouse
Isotype:	IgG2a
Clonality:	Monoclonal
Immunogen:	Full length human recombinant protein of human TDO2(NP_005642) produced in HEK293T cell.
Formulation:	PBS (pH 7.3) containing 1% BSA, 50% glycerol and 0.02% sodium azide.
Concentration:	0.5 mg/ml
Purification:	Purified from mouse ascites fluids or tissue culture supernatant by affinity chromatography (protein A/G)
Conjugation:	Biotin
Storage:	Store at -20°C as received.
Stability:	Stable for 12 months from date of receipt.
Predicted Protein Size:	47.7 kDa
Gene Name:	tryptophan 2,3-dioxygenase
Database Link:	NP_005642 Entrez Gene 56720 Mouse Entrez Gene 64206 Rat Entrez Gene 6999 Human P48775
Background:	Tryptophan 2,3-dioxygenase (EC 1.13.11.11) plays a role in catalyzing the first and rat-limiting step in the kynurenine pathway, the major pathway of tryptophan metabolism. [supplied by OMIM]
Synonyms:	TDO; TO; TPH2; TRPO
Protein Pathways:	Metabolic pathways, Tryptophan metabolism

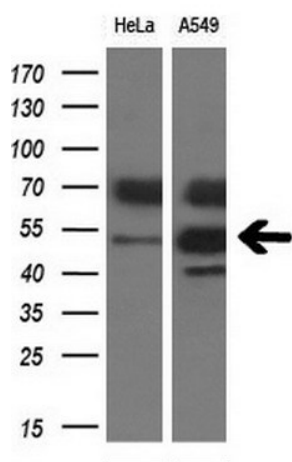


[View online »](#)

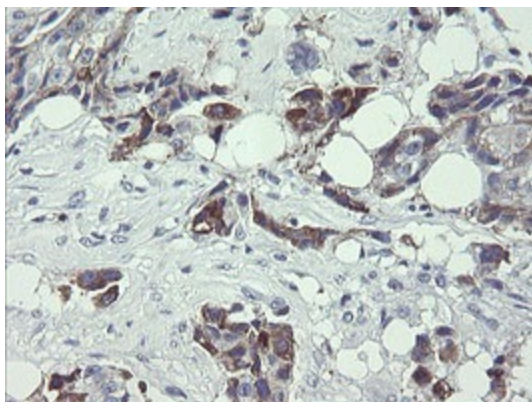
Product images:



HEK293T cells were transfected with the pCMV6-ENTRY control (Left lane) or pCMV6-ENTRY TDO2 ([RC202777], Right lane) cDNA for 48 hrs and lysed. Equivalent amounts of cell lysates (5 ug per lane) were separated by SDS-PAGE and immunoblotted with anti-TDO2. Positive lysates [LY401726] (100ug) and [LC401726] (20ug) can be purchased separately from OriGene.



Western blot analysis of extracts (10ug) from 2 different cell lines by using anti-TDO2 monoclonal antibody at 1:200 dilution.



Immunohistochemical staining of paraffin-embedded Adenocarcinoma of Human breast tissue using anti-TDO2 mouse monoclonal antibody. (Heat-induced epitope retrieval by 10mM citric buffer, pH6.0, 100°C for 10min, [TA504730])