

## Product datasheet for **TA504728**

### **METT10D (METTL16) Mouse Monoclonal Antibody [Clone ID: OTI1A2]**

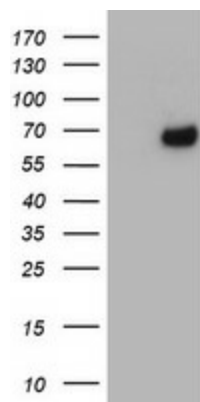
#### **Product data:**

Product Type:	Primary Antibodies
Clone Name:	OTI1A2
Applications:	FC, IF, WB
Recommended Dilution:	WB 1:1000, IF 1:100, FLOW 1:100
Reactivity:	Human, Mouse
Host:	Mouse
Isotype:	IgG1
Clonality:	Monoclonal
Immunogen:	Full length human recombinant protein of human METT10D(NP_076991) produced in HEK293T cell.
Formulation:	PBS (pH 7.3) containing 1% BSA, 50% glycerol and 0.02% sodium azide.
Concentration:	0.7 mg/ml
Purification:	Purified from mouse ascites fluids or tissue culture supernatant by affinity chromatography (protein A/G)
Conjugation:	Unconjugated
Storage:	Store at -20°C as received.
Stability:	Stable for 12 months from date of receipt.
Predicted Protein Size:	63.4 kDa
Gene Name:	methyltransferase 16, N6-methyladenosine
Database Link:	<a href="#">NP_076991</a> <a href="#">Entrez Gene 67493 Mouse</a> <a href="#">Entrez Gene 79066 Human</a> <a href="#">Q86W50</a>
Synonyms:	METT10D

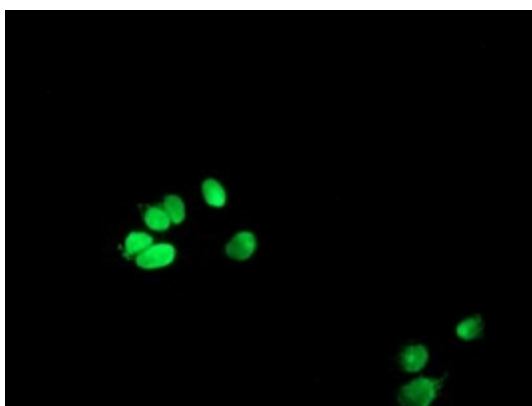


[View online »](#)

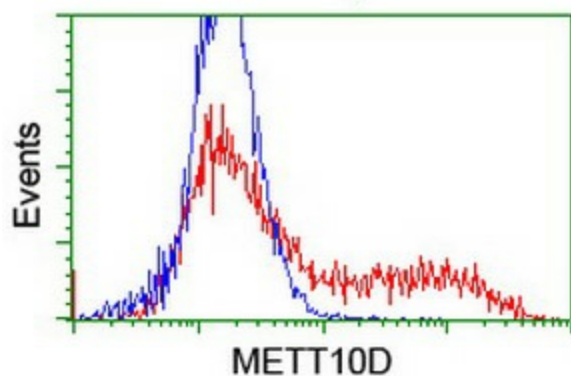
## Product images:



HEK293T cells were transfected with the pCMV6-ENTRY control (Left lane) or pCMV6-ENTRY METT10D ([RC208648], Right lane) cDNA for 48 hrs and lysed. Equivalent amounts of cell lysates (5 ug per lane) were separated by SDS-PAGE and immunoblotted with anti-METT10D. Positive lysates [LY411358] (100ug) and [LC411358] (20ug) can be purchased separately from OriGene.



Anti-METT10D mouse monoclonal antibody (TA504728) immunofluorescent staining of COS7 cells transiently transfected by pCMV6-ENTRY METT10D ([RC208648]).



HEK293T cells transfected with either [RC208648] overexpress plasmid (Red) or empty vector control plasmid (Blue) were immunostained by anti-METT10D antibody (TA504728), and then analyzed by flow cytometry.