

## Product datasheet for **TA504712BM**

### SRPR beta (SRPRB) Mouse Monoclonal Antibody (HRP conjugated) [Clone ID: OTI1D9]

#### Product data:

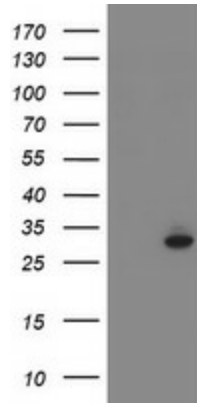
Product Type:	Primary Antibodies
Clone Name:	OTI1D9
Applications:	FC, IHC, WB
Recommended Dilution:	WB 1:1000, IHC 1:150, FLOW 1:100
Reactivity:	Human, Mouse, Rat
Host:	Mouse
Isotype:	IgG1
Clonality:	Monoclonal
Immunogen:	Full length human recombinant protein of human SRPRB(NP_067026) produced in HEK293T cell.
Formulation:	PBS (pH 7.3) containing 1% BSA, 50% glycerol.
Concentration:	0.5 mg/ml
Purification:	Purified from mouse ascites fluids or tissue culture supernatant by affinity chromatography (protein A/G)
Conjugation:	HRP
Storage:	Store at -20°C as received.
Stability:	Stable for 12 months from date of receipt.
Predicted Protein Size:	29.5 kDa
Gene Name:	SRP receptor subunit beta
Database Link:	<a href="#">NP_067026</a> <a href="#">Entrez Gene 20818 Mouse</a> <a href="#">Entrez Gene 300965 Rat</a> <a href="#">Entrez Gene 58477 Human</a> <a href="#">Q9Y5M8</a>
Background:	The protein encoded by this gene has similarity to mouse protein which is a subunit of the signal recognition particle receptor (SR). This subunit is a transmembrane GTPase belonging to the GTPase superfamily. It anchors alpha subunit, a peripheral membrane GTPase, to the ER membrane. SR is required for the cotranslational targeting of both secretory and membrane proteins to the ER membrane. [provided by RefSeq]



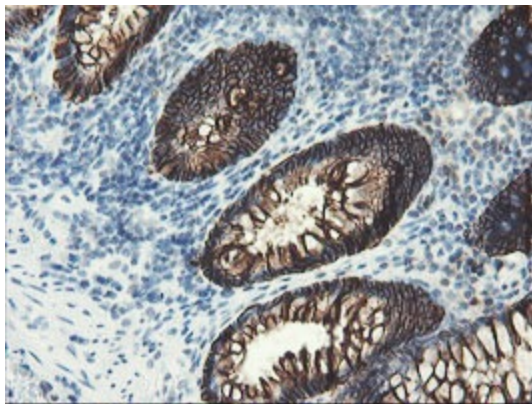
[View online »](#)

**Synonyms:** APMCF1  
**Protein Families:** Druggable Genome, Transmembrane

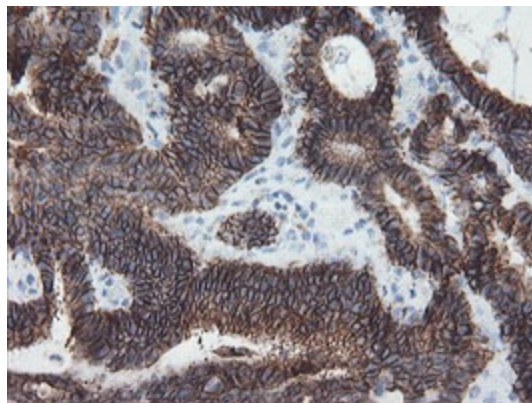
**Product images:**



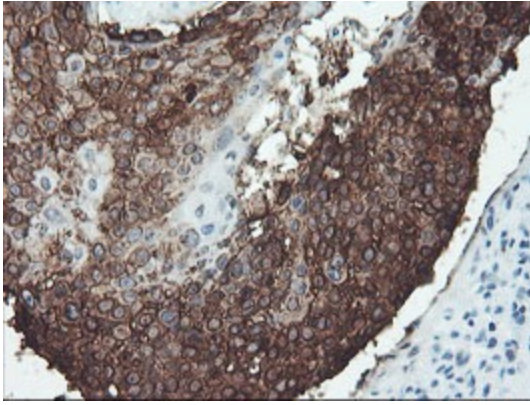
HEK293T cells were transfected with the pCMV6-ENTRY control (Cat# [PS100001], Left lane) or pCMV6-ENTRY SRPRB (Cat# [RC209486], Right lane) cDNA for 48 hrs and lysed. Equivalent amounts of cell lysates (5 ug per lane) were separated by SDS-PAGE and immunoblotted with anti-SRPRB(Cat# [TA504712]). Positive lysates [LY402853] (100ug) and [LC402853] (20ug) can be purchased separately from OriGene.



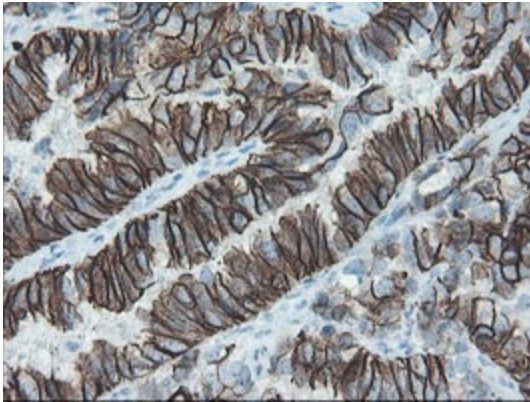
Immunohistochemical staining of paraffin-embedded Human colon tissue within the normal limits using anti-SRPRB mouse monoclonal antibody. (Heat-induced epitope retrieval by 10mM citric buffer, pH6.0, 100°C for 10min, [TA504712])



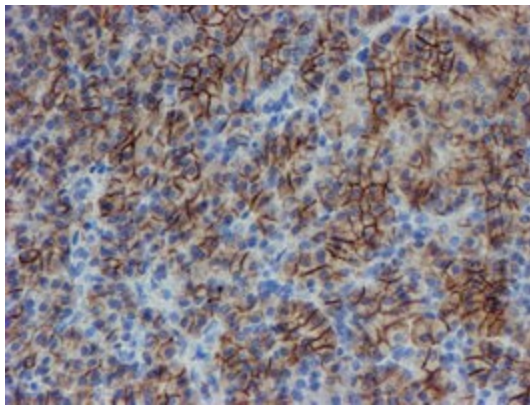
Immunohistochemical staining of paraffin-embedded Adenocarcinoma of Human colon tissue using anti-SRPRB mouse monoclonal antibody. (Heat-induced epitope retrieval by 10mM citric buffer, pH6.0, 100°C for 10min, [TA504712])



Immunohistochemical staining of paraffin-embedded Carcinoma of Human lung tissue using anti-SRPRB mouse monoclonal antibody. (Heat-induced epitope retrieval by 10mM citric buffer, pH6.0, 100°C for 10min, [TA504712])



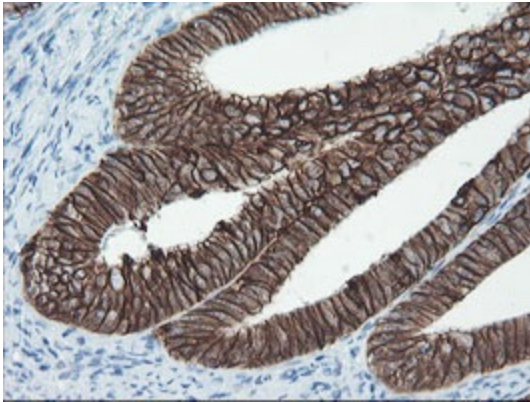
Immunohistochemical staining of paraffin-embedded Adenocarcinoma of Human ovary tissue using anti-SRPRB mouse monoclonal antibody. (Heat-induced epitope retrieval by 10mM citric buffer, pH6.0, 100°C for 10min, [TA504712])



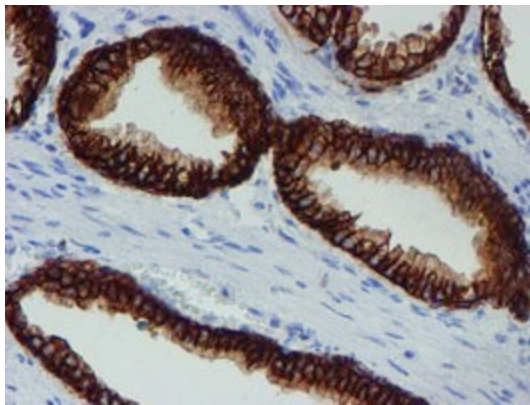
Immunohistochemical staining of paraffin-embedded Human pancreas tissue within the normal limits using anti-SRPRB mouse monoclonal antibody. (Heat-induced epitope retrieval by 10mM citric buffer, pH6.0, 100°C for 10min, [TA504712])



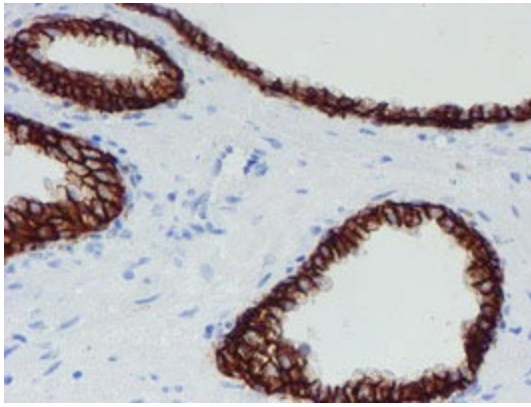
Immunohistochemical staining of paraffin-embedded Human endometrium tissue within the normal limits using anti-SRPRB mouse monoclonal antibody. (Heat-induced epitope retrieval by 10mM citric buffer, pH6.0, 100°C for 10min, [TA504712])



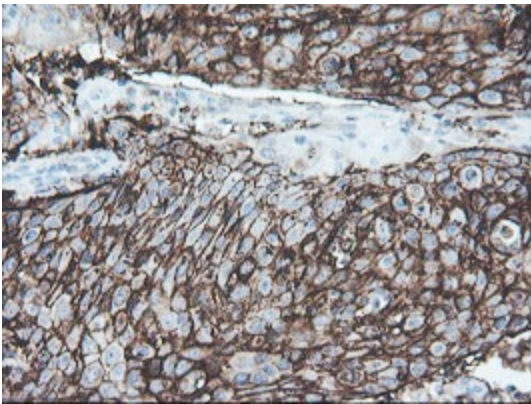
Immunohistochemical staining of paraffin-embedded Adenocarcinoma of Human endometrium tissue using anti-SRPRB mouse monoclonal antibody. (Heat-induced epitope retrieval by 10mM citric buffer, pH6.0, 100°C for 10min, [TA504712])



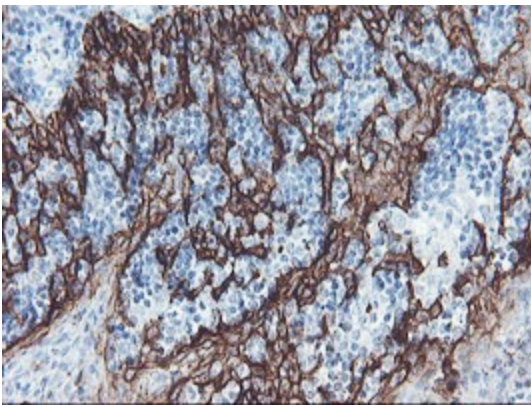
Immunohistochemical staining of paraffin-embedded Human prostate tissue within the normal limits using anti-SRPRB mouse monoclonal antibody. (Heat-induced epitope retrieval by 10mM citric buffer, pH6.0, 100°C for 10min, [TA504712])



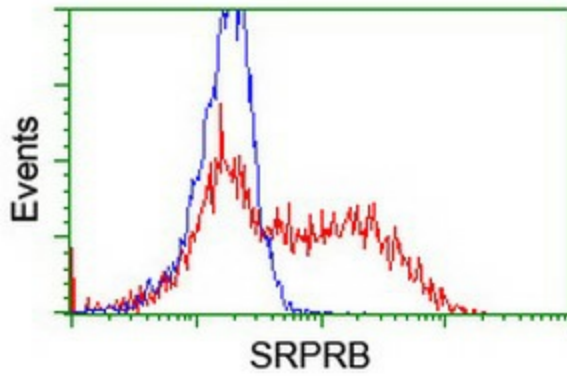
Immunohistochemical staining of paraffin-embedded Carcinoma of Human prostate tissue using anti-SRPRB mouse monoclonal antibody. (Heat-induced epitope retrieval by 10mM citric buffer, pH6.0, 100°C for 10min, [TA504712])



Immunohistochemical staining of paraffin-embedded Carcinoma of Human bladder tissue using anti-SRPRB mouse monoclonal antibody. (Heat-induced epitope retrieval by 10mM citric buffer, pH6.0, 100°C for 10min, [TA504712])



Immunohistochemical staining of paraffin-embedded Human tonsil within the normal limits using anti-SRPRB mouse monoclonal antibody. (Heat-induced epitope retrieval by 10mM citric buffer, pH6.0, 100°C for 10min, [TA504712])



HEK293T cells transfected with either [RC209486] overexpress plasmid (Red) or empty vector control plasmid (Blue) were immunostained by anti-SRPRB antibody ([TA504712]), and then analyzed by flow cytometry.