

## Product datasheet for **TA504711BM**

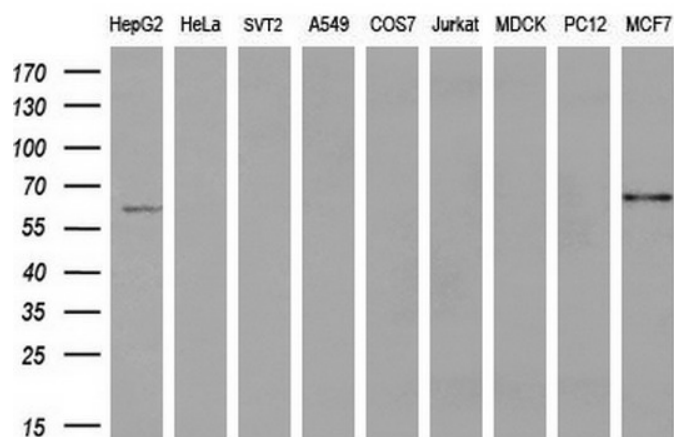
### ACSF2 Mouse Monoclonal Antibody (HRP conjugated) [Clone ID: OTI6E4]

#### Product data:

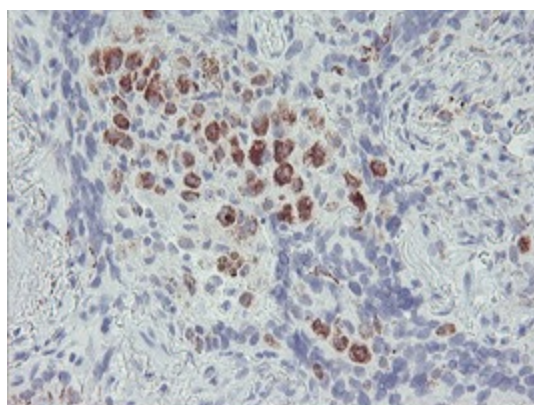
Product Type:	Primary Antibodies
Clone Name:	OTI6E4
Applications:	FC, IF, IHC, WB
Recommended Dilution:	IHC 1:150, IF 1:100, FLOW 1:100
Reactivity:	Human
Host:	Mouse
Isotype:	IgG1
Clonality:	Monoclonal
Immunogen:	Full length human recombinant protein of human ACSF2(NP_079425) produced in HEK293T cell.
Formulation:	PBS (pH 7.3) containing 1% BSA, 50% glycerol.
Concentration:	0.5 mg/ml
Purification:	Purified from mouse ascites fluids or tissue culture supernatant by affinity chromatography (protein A/G)
Conjugation:	HRP
Storage:	Store at -20°C as received.
Stability:	Stable for 12 months from date of receipt.
Predicted Protein Size:	67.9 kDa
Gene Name:	acyl-CoA synthetase family member 2
Database Link:	<a href="#">NP_079425</a> <a href="#">Entrez Gene 80221 Human</a> <a href="#">Q96CM8</a>
Synonyms:	ACSMW; AVYV493



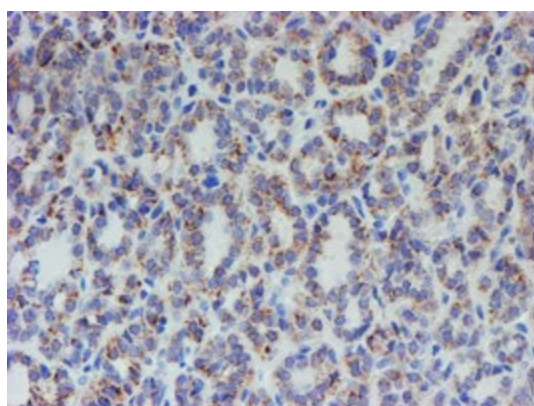
[View online »](#)

**Product images:**


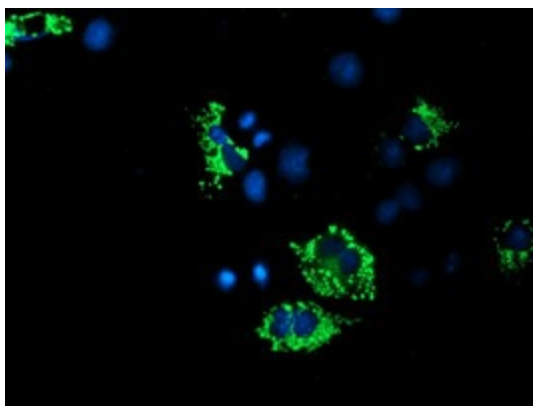
Western blot analysis of extracts (35ug) from 9 different cell lines by using anti-ACSF2 monoclonal antibody (HepG2: human; HeLa: human; SVT2: mouse; A549: human; COS7: monkey; Jurkat: human; MDCK: canine; PC12: rat; MCF7: human) (1:200).



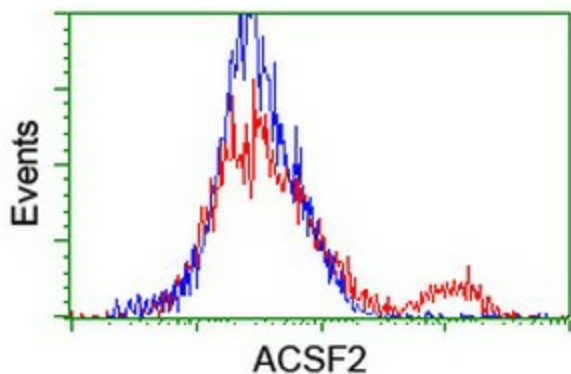
Immunohistochemical staining of paraffin-embedded Carcinoma of Human lung tissue using anti-ACSF2 mouse monoclonal antibody. (Heat-induced epitope retrieval by 10mM citric buffer, pH6.0, 100°C for 10min, [TA504711])



Immunohistochemical staining of paraffin-embedded Carcinoma of Human thyroid tissue using anti-ACSF2 mouse monoclonal antibody. (Heat-induced epitope retrieval by 10mM citric buffer, pH6.0, 100°C for 10min, [TA504711])



Anti-ACSF2 mouse monoclonal antibody ([TA504711]) immunofluorescent staining of COS7 cells transiently transfected by pCMV6-ENTRY ACSF2 ([RC204368]).



HEK293T cells transfected with either [RC204368] overexpress plasmid (Red) or empty vector control plasmid (Blue) were immunostained by anti-ACSF2 antibody ([TA504711]), and then analyzed by flow cytometry.