

Product datasheet for **TA504710AM**

METT10D (METTL16) Mouse Monoclonal Antibody (Biotin conjugated) [Clone ID: OTI3B5]

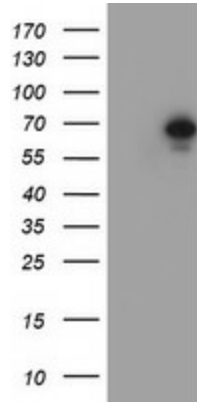
Product data:

Product Type:	Primary Antibodies
Clone Name:	OTI3B5
Applications:	IF, IHC, WB
Recommended Dilution:	WB 1:500~2000, IHC 1:150, IF 1:100
Reactivity:	Human, Monkey, Mouse
Host:	Mouse
Isotype:	IgG1
Clonality:	Monoclonal
Immunogen:	Full length human recombinant protein of human METT10D(NP_076991) produced in HEK293T cell.
Formulation:	PBS (pH 7.3) containing 1% BSA, 50% glycerol and 0.02% sodium azide.
Concentration:	0.5 mg/ml
Purification:	Purified from mouse ascites fluids or tissue culture supernatant by affinity chromatography (protein A/G)
Conjugation:	Biotin
Storage:	Store at -20°C as received.
Stability:	Stable for 12 months from date of receipt.
Predicted Protein Size:	63.4 kDa
Gene Name:	methyltransferase 16, N6-methyladenosine
Database Link:	NP_076991 Entrez Gene 67493 Mouse Entrez Gene 721312 Monkey Entrez Gene 79066 Human Q86W50
Synonyms:	METT10D

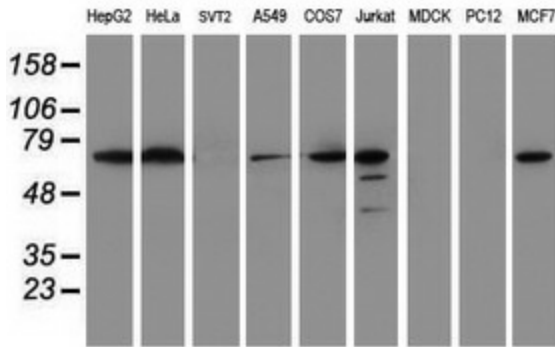


[View online »](#)

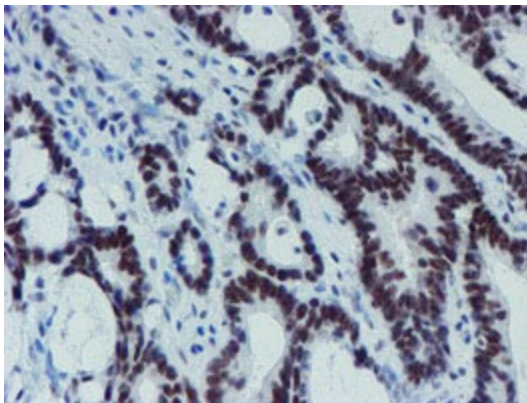
Product images:



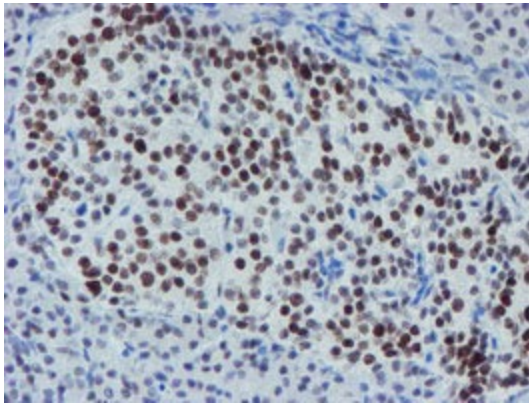
HEK293T cells were transfected with the pCMV6-ENTRY control (Cat# [PS100001], Left lane) or pCMV6-ENTRY METT10D (Cat# [RC208648], Right lane) cDNA for 48 hrs and lysed. Equivalent amounts of cell lysates (5 ug per lane) were separated by SDS-PAGE and immunoblotted with anti-METT10D(Cat# [TA504710]). Positive lysates [LY411358] (100ug) and [LC411358] (20ug) can be purchased separately from OriGene.



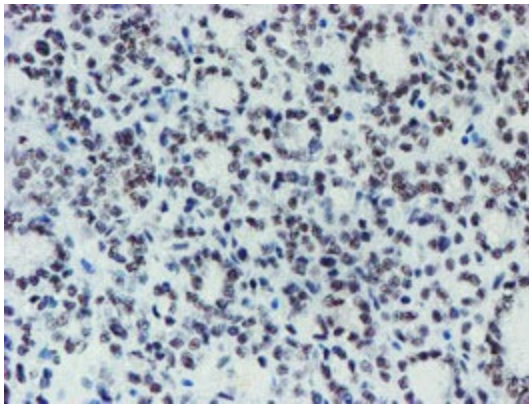
Western blot analysis of extracts (35ug) from 9 different cell lines by using anti-METT10D monoclonal antibody (HepG2: human; HeLa: human; SVT2: mouse; A549: human; COS7: monkey; Jurkat: human; MDCK: canine; PC12: rat; MCF7: human).



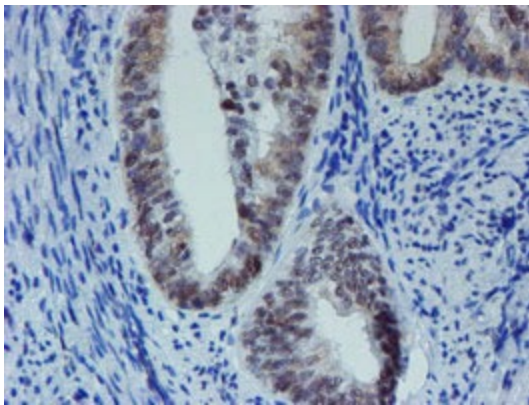
Immunohistochemical staining of paraffin-embedded Adenocarcinoma of Human colon tissue using anti-METT10D mouse monoclonal antibody. (Heat-induced epitope retrieval by 10mM citric buffer, pH6.0, 100°C for 10min, [TA504710])



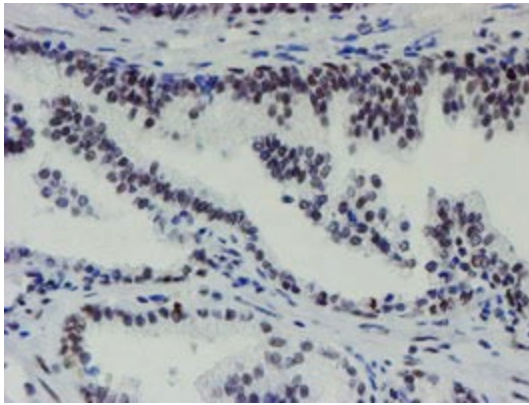
Immunohistochemical staining of paraffin-embedded Human pancreas tissue within the normal limits using anti-METT10D mouse monoclonal antibody. (Heat-induced epitope retrieval by 10mM citric buffer, pH6.0, 100°C for 10min, [TA504710])



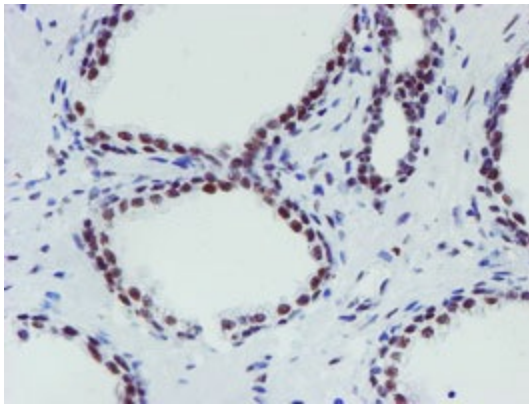
Immunohistochemical staining of paraffin-embedded Carcinoma of Human thyroid tissue using anti-METT10D mouse monoclonal antibody. (Heat-induced epitope retrieval by 10mM citric buffer, pH6.0, 100°C for 10min, [TA504710])



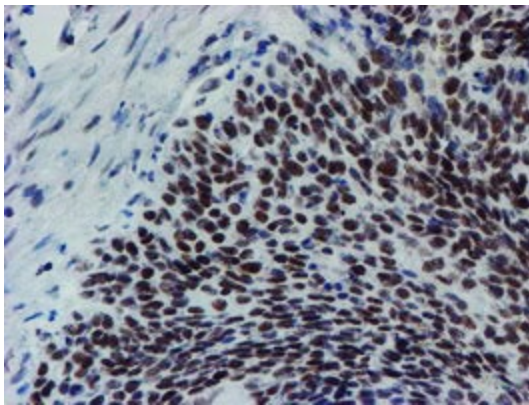
Immunohistochemical staining of paraffin-embedded Adenocarcinoma of Human endometrium tissue using anti-METT10D mouse monoclonal antibody. (Heat-induced epitope retrieval by 10mM citric buffer, pH6.0, 100°C for 10min, [TA504710])



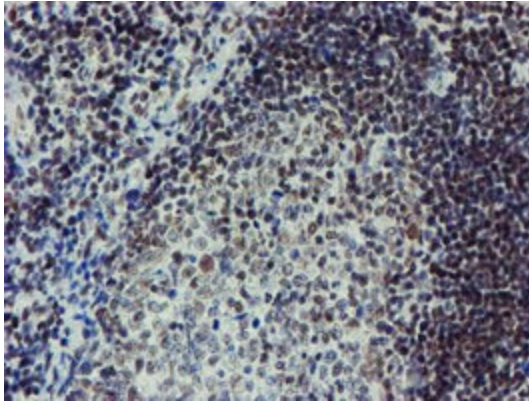
Immunohistochemical staining of paraffin-embedded Human prostate tissue within the normal limits using anti-METT10D mouse monoclonal antibody. (Heat-induced epitope retrieval by 10mM citric buffer, pH6.0, 100°C for 10min, [TA504710])



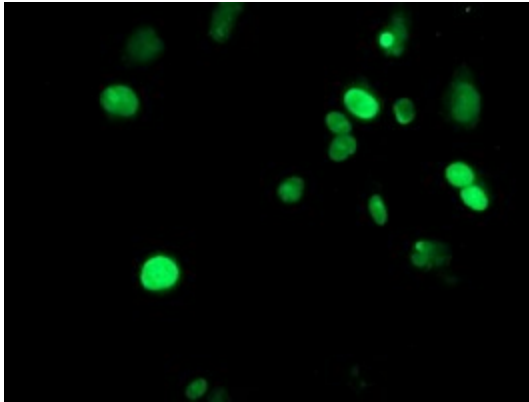
Immunohistochemical staining of paraffin-embedded Carcinoma of Human prostate tissue using anti-METT10D mouse monoclonal antibody. (Heat-induced epitope retrieval by 10mM citric buffer, pH6.0, 100°C for 10min, [TA504710])



Immunohistochemical staining of paraffin-embedded Carcinoma of Human bladder tissue using anti-METT10D mouse monoclonal antibody. (Heat-induced epitope retrieval by 10mM citric buffer, pH6.0, 100°C for 10min, [TA504710])



Immunohistochemical staining of paraffin-embedded Human tonsil within the normal limits using anti-METT10D mouse monoclonal antibody. (Heat-induced epitope retrieval by 10mM citric buffer, pH6.0, 100°C for 10min, [TA504710])



Anti-METT10D mouse monoclonal antibody ([TA504710]) immunofluorescent staining of COS7 cells transiently transfected by pCMV6-ENTRY METT10D ([RC208648]).