

Product datasheet for **TA504706BM**

Phosphoribosyl pyrophosphate amidotransferase (PPAT) Mouse Monoclonal Antibody (HRP conjugated) [Clone ID: OTI1B11]

Product data:

Product Type:	Primary Antibodies
Clone Name:	OTI1B11
Applications:	IHC, WB
Recommended Dilution:	WB 1:500, IHC 1:150
Reactivity:	Human, Mouse, Rat
Host:	Mouse
Isotype:	IgG1
Clonality:	Monoclonal
Immunogen:	Human recombinant protein fragment corresponding to amino acids 42-278 of human PPAT(NP_002694) produced in E.coli.
Formulation:	PBS (pH 7.3) containing 1% BSA, 50% glycerol.
Concentration:	0.5 mg/ml
Purification:	Purified from mouse ascites fluids or tissue culture supernatant by affinity chromatography (protein A/G)
Conjugation:	HRP
Storage:	Store at -20°C as received.
Stability:	Stable for 12 months from date of receipt.
Predicted Protein Size:	57.2 kDa
Gene Name:	phosphoribosyl pyrophosphate amidotransferase
Database Link:	NP_002694 Entrez Gene 117544 RatEntrez Gene 231327 MouseEntrez Gene 5471 Human Q06203



[View online »](#)

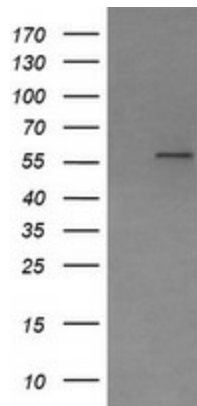
Background: The protein encoded by this gene is a member of the purine/pyrimidine phosphoribosyltransferase family. It is a regulatory allosteric enzyme that catalyzes the first step of de novo purine nucleotide biosynthetic pathway. This gene and PAICS/AIRC gene, a bifunctional enzyme catalyzing steps six and seven of this pathway, are located in close proximity on chromosome 4, and divergently transcribed from an intergenic region. [provided by RefSeq, Mar 2011]

Synonyms: ATASE; GPAT; PRAT

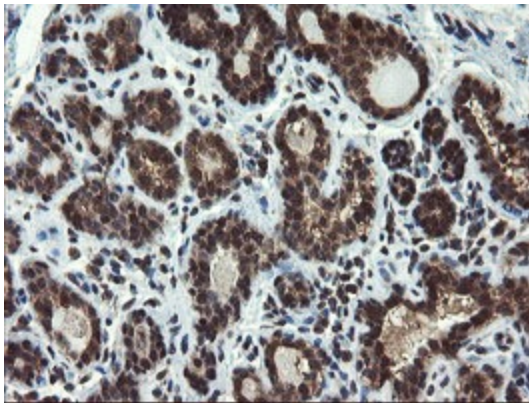
Protein Families: Druggable Genome, Protease

Protein Pathways: Alanine, aspartate and glutamate metabolism, Metabolic pathways, Purine metabolism

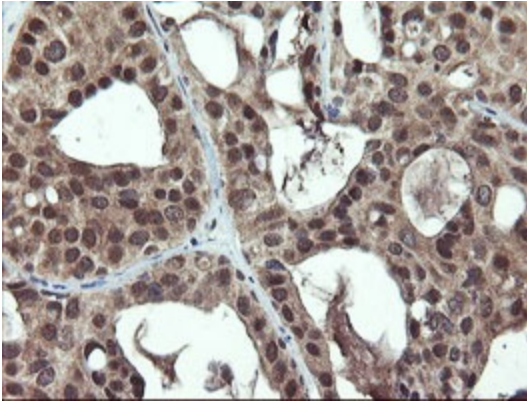
Product images:



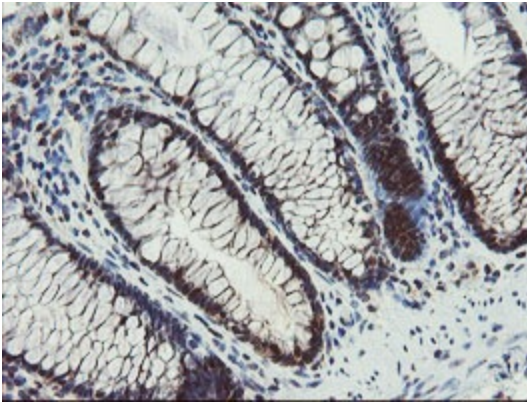
HEK293T cells were transfected with the pCMV6-ENTRY control (Left lane) or pCMV6-ENTRY PPAT ([RC201144], Right lane) cDNA for 48 hrs and lysed. Equivalent amounts of cell lysates (5 ug per lane) were separated by SDS-PAGE and immunoblotted with anti-PPAT. Positive lysates [LY400951] (100ug) and [LC400951] (20ug) can be purchased separately from OriGene.



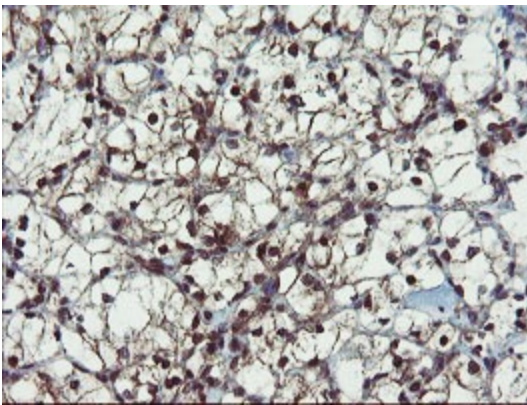
Immunohistochemical staining of paraffin-embedded Human breast tissue within the normal limits using anti-PPAT mouse monoclonal antibody. (Heat-induced epitope retrieval by 10mM citric buffer, pH6.0, 120°C for 3min, [TA504706])



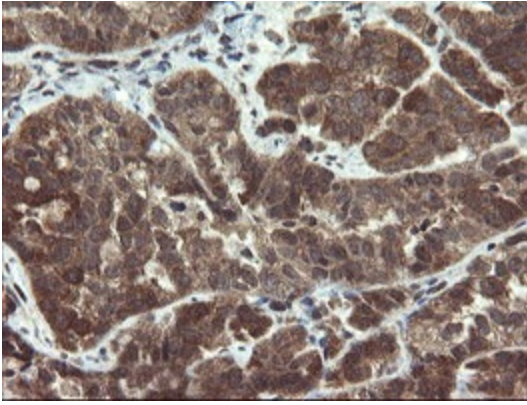
Immunohistochemical staining of paraffin-embedded Adenocarcinoma of Human breast tissue using anti-PPAT mouse monoclonal antibody. (Heat-induced epitope retrieval by 10mM citric buffer, pH6.0, 120°C for 3min, [TA504706])



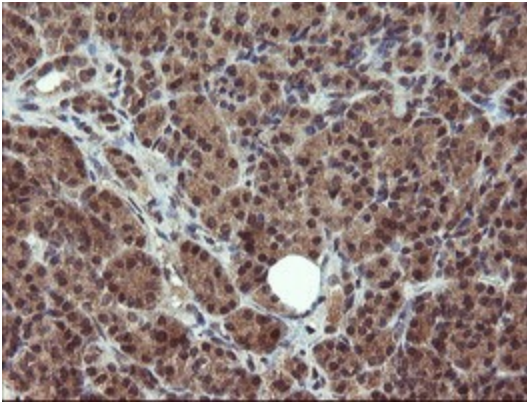
Immunohistochemical staining of paraffin-embedded Human colon tissue within the normal limits using anti-PPAT mouse monoclonal antibody. (Heat-induced epitope retrieval by 10mM citric buffer, pH6.0, 120°C for 3min, [TA504706])



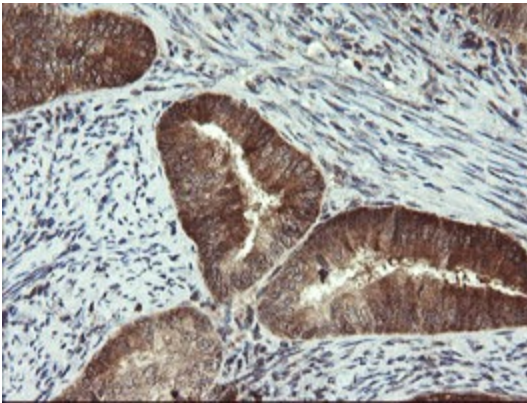
Immunohistochemical staining of paraffin-embedded Carcinoma of Human kidney tissue using anti-PPAT mouse monoclonal antibody. (Heat-induced epitope retrieval by 10mM citric buffer, pH6.0, 120°C for 3min, [TA504706])



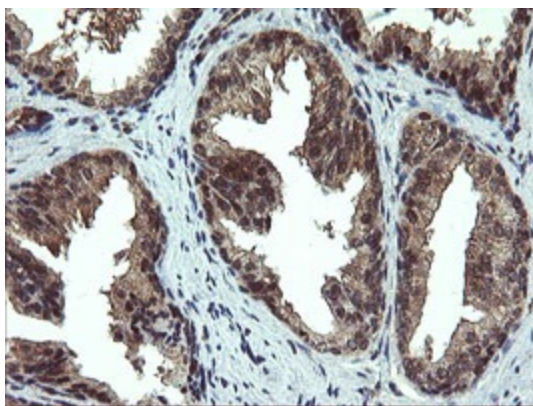
Immunohistochemical staining of paraffin-embedded Adenocarcinoma of Human ovary tissue using anti-PPAT mouse monoclonal antibody. (Heat-induced epitope retrieval by 10mM citric buffer, pH6.0, 120°C for 3min, [TA504706])



Immunohistochemical staining of paraffin-embedded Human pancreas tissue within the normal limits using anti-PPAT mouse monoclonal antibody. (Heat-induced epitope retrieval by 10mM citric buffer, pH6.0, 120°C for 3min, [TA504706])



Immunohistochemical staining of paraffin-embedded Adenocarcinoma of Human endometrium tissue using anti-PPAT mouse monoclonal antibody. (Heat-induced epitope retrieval by 10mM citric buffer, pH6.0, 120°C for 3min, [TA504706])



Immunohistochemical staining of paraffin-embedded Human prostate tissue within the normal limits using anti-PPAT mouse monoclonal antibody. (Heat-induced epitope retrieval by 10mM citric buffer, pH6.0, 120°C for 3min, [TA504706])