

## Product datasheet for **TA504703S**

### **RUNX1T1 Mouse Monoclonal Antibody [Clone ID: OT11H1]**

#### **Product data:**

<b>Product Type:</b>	Primary Antibodies
<b>Clone Name:</b>	OT11H1
<b>Applications:</b>	IF, WB
<b>Recommended Dilution:</b>	WB 1:2000, IF 1:100
<b>Reactivity:</b>	Human, Mouse, Rat
<b>Host:</b>	Mouse
<b>Isotype:</b>	IgG1
<b>Clonality:</b>	Monoclonal
<b>Immunogen:</b>	Full length human recombinant protein of human RUNX1T1(NP_783553) produced in HEK293T cell.
<b>Formulation:</b>	PBS (pH 7.3) containing 1% BSA, 50% glycerol and 0.02% sodium azide.
<b>Concentration:</b>	1 mg/ml
<b>Purification:</b>	Purified from mouse ascites fluids or tissue culture supernatant by affinity chromatography (protein A/G)
<b>Conjugation:</b>	Unconjugated
<b>Storage:</b>	Store at -20°C as received.
<b>Stability:</b>	Stable for 12 months from date of receipt.
<b>Predicted Protein Size:</b>	63 kDa
<b>Gene Name:</b>	RUNX1 partner transcriptional co-repressor 1
<b>Database Link:</b>	<a href="#">NP_783553</a> <a href="#">Entrez Gene 12395 Mouse</a> <a href="#">Entrez Gene 362489 Rat</a> <a href="#">Entrez Gene 862 Human</a> <a href="#">Q06455</a>



[View online »](#)

**Background:**

This gene encodes a member of the myeloid translocation gene family which interact with DNA-bound transcription factors and recruit a range of corepressors to facilitate transcriptional repression. The t(8;21)(q22;q22) translocation is one of the most frequent karyotypic abnormalities in acute myeloid leukemia. The translocation produces a chimeric gene made up of the 5'-region of the runt-related transcription factor 1 gene fused to the 3'-region of this gene. The chimeric protein is thought to associate with the nuclear corepressor/histone deacetylase complex to block hematopoietic differentiation. Alternative splicing results in multiple transcript variants. [provided by RefSeq]

**Synonyms:**

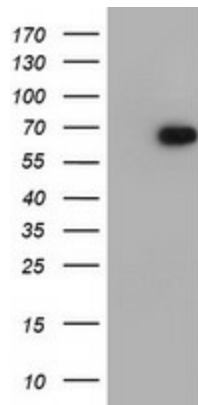
AML1T1; CBFA2T1; CDR; ETO; MTG8; ZMYND2

**Protein Families:**

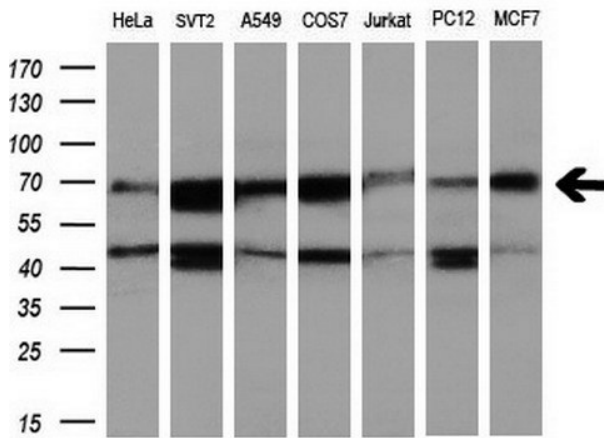
Transcription Factors

**Protein Pathways:**

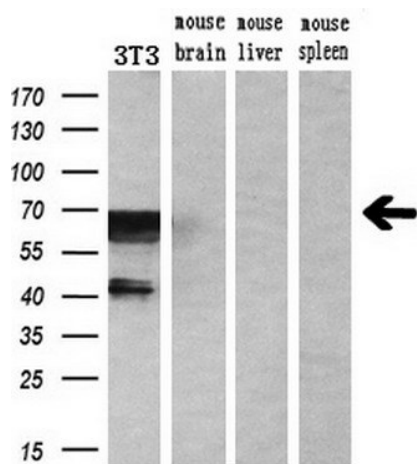
Acute myeloid leukemia, Pathways in cancer

**Product images:**


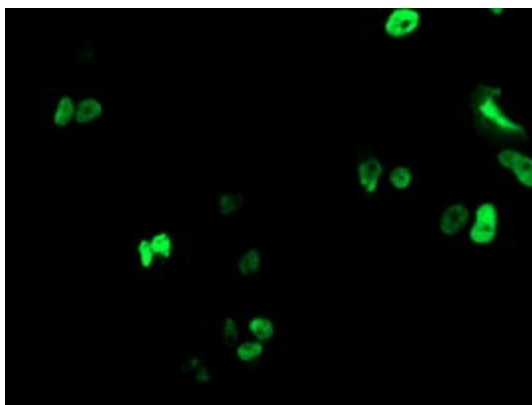
HEK293T cells were transfected with the pCMV6-ENTRY control (Cat# [PS100001], Left lane) or pCMV6-ENTRY RUNX1T1 (Cat# [RC222426], Right lane) cDNA for 48 hrs and lysed. Equivalent amounts of cell lysates (5 ug per lane) were separated by SDS-PAGE and immunoblotted with anti-RUNX1T1 (Cat# [TA504703]). Positive lysates [LY403575] (100ug) and [LC403575] (20ug) can be purchased separately from OriGene.



Western blot analysis of extracts (10ug) from 7 different cell lines by using anti-RUNX1T1 monoclonal antibody at 1:200 dilution.



Western blot analysis of extracts (10ug) from a mouse cell line and 3 different mouse tissues by using anti-RUNX1T1 monoclonal antibody (1:200).



Anti-RUNX1T1 mouse monoclonal antibody ([TA504703]) immunofluorescent staining of COS7 cells transiently transfected by pCMV6-ENTRY RUNX1T1 ([RC222426]).