

Product datasheet for **TA504703M**

RUNX1T1 Mouse Monoclonal Antibody [Clone ID: OT11H1]

Product data:

Product Type:	Primary Antibodies
Clone Name:	OT11H1
Applications:	IF, WB
Recommended Dilution:	WB 1:2000, IF 1:100
Reactivity:	Human, Mouse, Rat
Host:	Mouse
Isotype:	IgG1
Clonality:	Monoclonal
Immunogen:	Full length human recombinant protein of human RUNX1T1(NP_783553) produced in HEK293T cell.
Formulation:	PBS (pH 7.3) containing 1% BSA, 50% glycerol and 0.02% sodium azide.
Concentration:	1 mg/ml
Purification:	Purified from mouse ascites fluids or tissue culture supernatant by affinity chromatography (protein A/G)
Conjugation:	Unconjugated
Storage:	Store at -20°C as received.
Stability:	Stable for 12 months from date of receipt.
Predicted Protein Size:	63 kDa
Gene Name:	RUNX1 partner transcriptional co-repressor 1
Database Link:	NP_783553 Entrez Gene 12395 Mouse Entrez Gene 362489 Rat Entrez Gene 862 Human Q06455

[View online »](#)

Background:

This gene encodes a member of the myeloid translocation gene family which interact with DNA-bound transcription factors and recruit a range of corepressors to facilitate transcriptional repression. The t(8;21)(q22;q22) translocation is one of the most frequent karyotypic abnormalities in acute myeloid leukemia. The translocation produces a chimeric gene made up of the 5'-region of the runt-related transcription factor 1 gene fused to the 3'-region of this gene. The chimeric protein is thought to associate with the nuclear corepressor/histone deacetylase complex to block hematopoietic differentiation. Alternative splicing results in multiple transcript variants. [provided by RefSeq]

Synonyms:

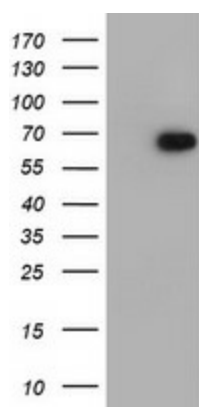
AML1T1; CBFA2T1; CDR; ETO; MTG8; ZMYND2

Protein Families:

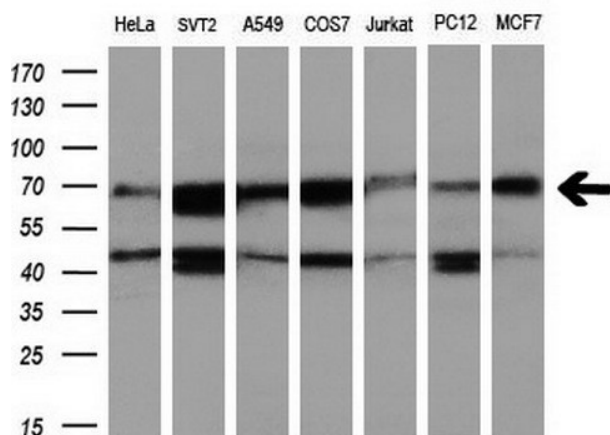
Transcription Factors

Protein Pathways:

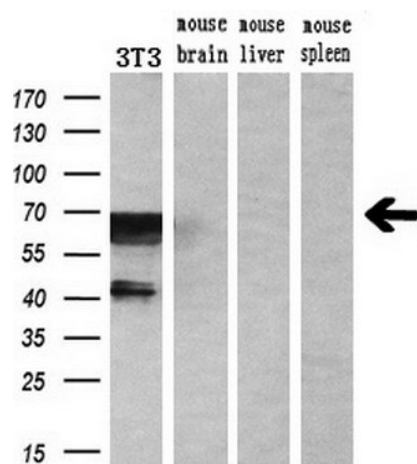
Acute myeloid leukemia, Pathways in cancer

Product images:


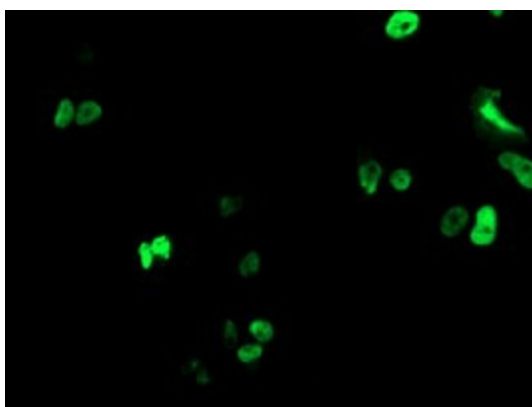
HEK293T cells were transfected with the pCMV6-ENTRY control (Cat# [PS100001], Left lane) or pCMV6-ENTRY RUNX1T1 (Cat# [RC222426], Right lane) cDNA for 48 hrs and lysed. Equivalent amounts of cell lysates (5 ug per lane) were separated by SDS-PAGE and immunoblotted with anti-RUNX1T1 (Cat# [TA504703]). Positive lysates [LY403575] (100ug) and [LC403575] (20ug) can be purchased separately from OriGene.



Western blot analysis of extracts (10ug) from 7 different cell lines by using anti-RUNX1T1 monoclonal antibody at 1:200 dilution.



Western blot analysis of extracts (10ug) from a mouse cell line and 3 different mouse tissues by using anti-RUNX1T1 monoclonal antibody (1:200).



Anti-RUNX1T1 mouse monoclonal antibody ([TA504703]) immunofluorescent staining of COS7 cells transiently transfected by pCMV6-ENTRY RUNX1T1 ([RC222426]).