

Product datasheet for **TA504697S**

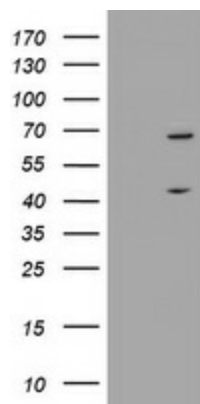
METT10D (METTL16) Mouse Monoclonal Antibody [Clone ID: OTI5F10]

Product data:

Product Type:	Primary Antibodies
Clone Name:	OTI5F10
Applications:	WB
Recommended Dilution:	WB 1:2000
Reactivity:	Human, Mouse
Host:	Mouse
Isotype:	IgG2b
Clonality:	Monoclonal
Immunogen:	Full length human recombinant protein of human METT10D(NP_076991) produced in HEK293T cell.
Formulation:	PBS (pH 7.3) containing 1% BSA, 50% glycerol and 0.02% sodium azide.
Concentration:	1 mg/ml
Purification:	Purified from mouse ascites fluids or tissue culture supernatant by affinity chromatography (protein A/G)
Conjugation:	Unconjugated
Storage:	Store at -20°C as received.
Stability:	Stable for 12 months from date of receipt.
Predicted Protein Size:	63.4 kDa
Gene Name:	methyltransferase 16, N6-methyladenosine
Database Link:	NP_076991 Entrez Gene 67493 Mouse Entrez Gene 79066 Human Q86W50
Synonyms:	METT10D



[View online »](#)

Product images:

HEK293T cells were transfected with the pCMV6-ENTRY control (Left lane) or pCMV6-ENTRY METT10D ([RC208648], Right lane) cDNA for 48 hrs and lysed. Equivalent amounts of cell lysates (5 ug per lane) were separated by SDS-PAGE and immunoblotted with anti-METT10D. Positive lysates [LY411358] (100ug) and [LC411358] (20ug) can be purchased separately from OriGene.