

Product datasheet for **TA504695M**

Carboxypeptidase A2 (CPA2) Mouse Monoclonal Antibody [Clone ID: OTI7G2]

Product data:

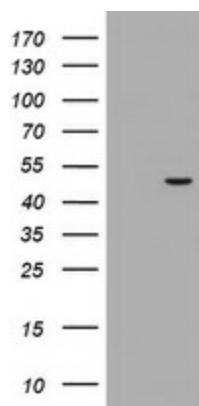
Product Type:	Primary Antibodies
Clone Name:	OTI7G2
Applications:	WB
Recommended Dilution:	WB 1:2000
Reactivity:	Human, Mouse, Rat
Host:	Mouse
Isotype:	IgG2b
Clonality:	Monoclonal
Immunogen:	Full length human recombinant protein of human CPA2(NP_001860) produced in HEK293T cell.
Formulation:	PBS (pH 7.3) containing 1% BSA, 50% glycerol and 0.02% sodium azide.
Concentration:	1 mg/ml
Purification:	Purified from mouse ascites fluids or tissue culture supernatant by affinity chromatography (protein A/G)
Conjugation:	Unconjugated
Storage:	Store at -20°C as received.
Stability:	Stable for 12 months from date of receipt.
Predicted Protein Size:	44.9 kDa
Gene Name:	carboxypeptidase A2
Database Link:	NP_001860 Entrez Gene 232680 Mouse Entrez Gene 296959 Rat Entrez Gene 1358 Human P48052
Background:	Three different forms of human pancreatic procarboxypeptidase A have been isolated. The encoded protein represents the A2 form, which is a monomeric protein with different biochemical properties from the A1 and A3 forms. The A2 form of pancreatic procarboxypeptidase acts on aromatic C-terminal residues and is a secreted protein. [provided by RefSeq, Dec 2008]


[View online »](#)

Synonyms: carboxypeptidase A2 (pancreatic)

Protein Families: Druggable Genome, Protease, Secreted Protein

Product images:



HEK293T cells were transfected with the pCMV6-ENTRY control (Left lane) or pCMV6-ENTRY CPA2 ([RC202719], Right lane) cDNA for 48 hrs and lysed. Equivalent amounts of cell lysates (5 ug per lane) were separated by SDS-PAGE and immunoblotted with anti-CPA2. Positive lysates [LY419697] (100ug) and [LC419697] (20ug) can be purchased separately from OriGene.