

## Product datasheet for **TA504695AM**

### Carboxypeptidase A2 (CPA2) Mouse Monoclonal Antibody (Biotin conjugated) [Clone ID: OTI7G2]

#### Product data:

|                         |                                                                                                                                                                                                                                                                                                                                                                           |
|-------------------------|---------------------------------------------------------------------------------------------------------------------------------------------------------------------------------------------------------------------------------------------------------------------------------------------------------------------------------------------------------------------------|
| Product Type:           | Primary Antibodies                                                                                                                                                                                                                                                                                                                                                        |
| Clone Name:             | OTI7G2                                                                                                                                                                                                                                                                                                                                                                    |
| Applications:           | WB                                                                                                                                                                                                                                                                                                                                                                        |
| Recommended Dilution:   | WB 1:2000                                                                                                                                                                                                                                                                                                                                                                 |
| Reactivity:             | Human, Mouse, Rat                                                                                                                                                                                                                                                                                                                                                         |
| Host:                   | Mouse                                                                                                                                                                                                                                                                                                                                                                     |
| Isotype:                | IgG2b                                                                                                                                                                                                                                                                                                                                                                     |
| Clonality:              | Monoclonal                                                                                                                                                                                                                                                                                                                                                                |
| Immunogen:              | Full length human recombinant protein of human CPA2(NP_001860) produced in HEK293T cell.                                                                                                                                                                                                                                                                                  |
| Formulation:            | PBS (pH 7.3) containing 1% BSA, 50% glycerol and 0.02% sodium azide.                                                                                                                                                                                                                                                                                                      |
| Concentration:          | 0.5 mg/ml                                                                                                                                                                                                                                                                                                                                                                 |
| Purification:           | Purified from mouse ascites fluids or tissue culture supernatant by affinity chromatography (protein A/G)                                                                                                                                                                                                                                                                 |
| Conjugation:            | Biotin                                                                                                                                                                                                                                                                                                                                                                    |
| Storage:                | Store at -20°C as received.                                                                                                                                                                                                                                                                                                                                               |
| Stability:              | Stable for 12 months from date of receipt.                                                                                                                                                                                                                                                                                                                                |
| Predicted Protein Size: | 44.9 kDa                                                                                                                                                                                                                                                                                                                                                                  |
| Gene Name:              | carboxypeptidase A2                                                                                                                                                                                                                                                                                                                                                       |
| Database Link:          | <a href="#">NP_001860</a><br><a href="#">Entrez Gene 232680 MouseEntrez Gene 296959 RatEntrez Gene 1358 Human P48052</a>                                                                                                                                                                                                                                                  |
| Background:             | Three different forms of human pancreatic procarboxypeptidase A have been isolated. The encoded protein represents the A2 form, which is a monomeric protein with different biochemical properties from the A1 and A3 forms. The A2 form of pancreatic procarboxypeptidase acts on aromatic C-terminal residues and is a secreted protein. [provided by RefSeq, Dec 2008] |

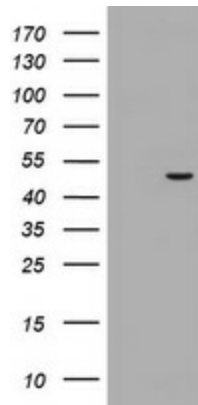


[View online »](#)

**Synonyms:** carboxypeptidase A2 (pancreatic)

**Protein Families:** Druggable Genome, Protease, Secreted Protein

**Product images:**



HEK293T cells were transfected with the pCMV6-ENTRY control (Left lane) or pCMV6-ENTRY CPA2 ([RC202719], Right lane) cDNA for 48 hrs and lysed. Equivalent amounts of cell lysates (5 ug per lane) were separated by SDS-PAGE and immunoblotted with anti-CPA2. Positive lysates [LY419697] (100ug) and [LC419697] (20ug) can be purchased separately from OriGene.