

## Product datasheet for **TA504693**

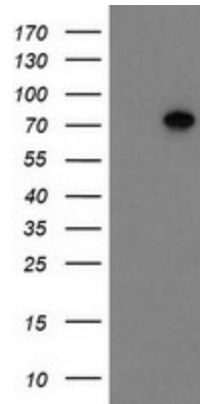
### SCFD1 Mouse Monoclonal Antibody [Clone ID: OTI3F2]

#### Product data:

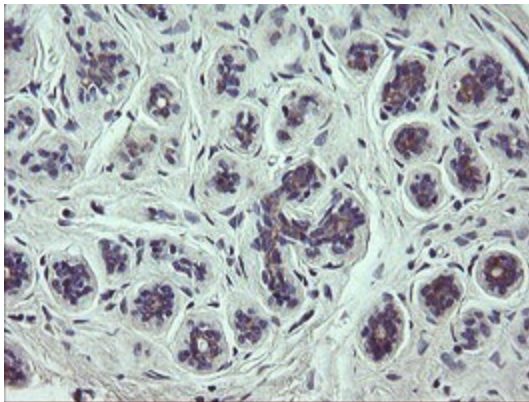
Product Type:	Primary Antibodies
Clone Name:	OTI3F2
Applications:	IHC, WB
Recommended Dilution:	WB 1:2000, IHC 1:150
Reactivity:	Human, Mouse, Rat
Host:	Mouse
Isotype:	IgG1
Clonality:	Monoclonal
Immunogen:	Full length human recombinant protein of human SCFD1(NP_057190) produced in HEK293T cell.
Formulation:	PBS (pH 7.3) containing 1% BSA, 50% glycerol and 0.02% sodium azide.
Concentration:	1 mg/ml
Purification:	Purified from mouse ascites fluids or tissue culture supernatant by affinity chromatography (protein A/G)
Conjugation:	Unconjugated
Storage:	Store at -20°C as received.
Stability:	Stable for 12 months from date of receipt.
Gene Name:	sec1 family domain containing 1
Database Link:	<a href="#">NP_057190</a> <a href="#">Entrez Gene 54350 Rat</a> <a href="#">Entrez Gene 76983 Mouse</a> <a href="#">Entrez Gene 23256 Human</a> <a href="#">Q8WVM8</a>
Synonyms:	C14orf163; RA410; SLY1; SLY1P; STXBP1L2



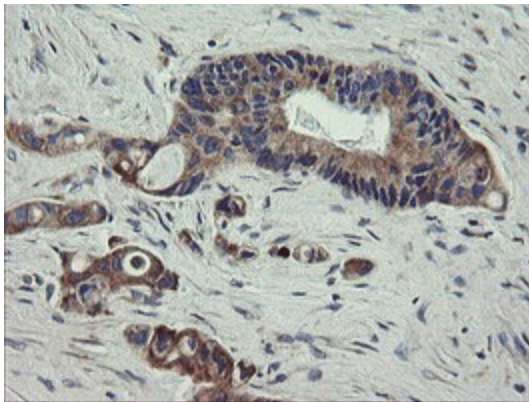
[View online »](#)

**Product images:**

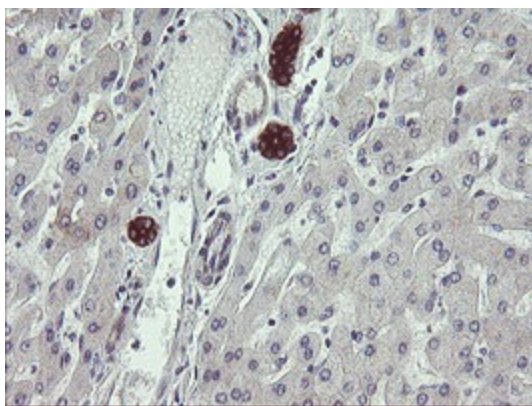
HEK293T cells were transfected with the pCMV6-ENTRY control (Left lane) or pCMV6-ENTRY SCFD1 ([RC217990], Right lane) cDNA for 48 hrs and lysed. Equivalent amounts of cell lysates (5 ug per lane) were separated by SDS-PAGE and immunoblotted with anti-SCFD1. Positive lysates [LY414181] (100ug) and [LC414181] (20ug) can be purchased separately from OriGene.



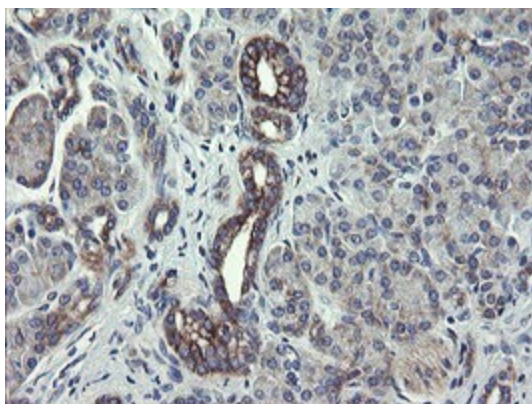
Immunohistochemical staining of paraffin-embedded Human breast tissue within the normal limits using anti-SCFD1 mouse monoclonal antibody. (Heat-induced epitope retrieval by 10mM citric buffer, pH6.0, 100°C for 10min, TA504693)



Immunohistochemical staining of paraffin-embedded Adenocarcinoma of Human colon tissue using anti-SCFD1 mouse monoclonal antibody. (Heat-induced epitope retrieval by 10mM citric buffer, pH6.0, 100°C for 10min, TA504693)



Immunohistochemical staining of paraffin-embedded Human liver tissue within the normal limits using anti-SCFD1 mouse monoclonal antibody. (Heat-induced epitope retrieval by 10mM citric buffer, pH6.0, 100°C for 10min, TA504693)



Immunohistochemical staining of paraffin-embedded Human pancreas tissue within the normal limits using anti-SCFD1 mouse monoclonal antibody. (Heat-induced epitope retrieval by 10mM citric buffer, pH6.0, 100°C for 10min, TA504693)