

Product datasheet for **TA504691BM**

SCFD1 Mouse Monoclonal Antibody (HRP conjugated) [Clone ID: OTI1F4]

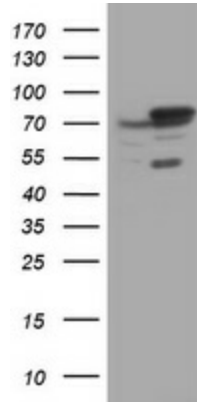
Product data:

Product Type:	Primary Antibodies
Clone Name:	OTI1F4
Applications:	IHC, WB
Recommended Dilution:	WB 1:2000, IHC 1:150
Reactivity:	Human, Mouse, Rat
Host:	Mouse
Isotype:	IgG1
Clonality:	Monoclonal
Immunogen:	Full length human recombinant protein of human SCFD1(NP_057190) produced in HEK293T cell.
Formulation:	PBS (pH 7.3) containing 1% BSA, 50% glycerol.
Concentration:	0.5 mg/ml
Purification:	Purified from mouse ascites fluids or tissue culture supernatant by affinity chromatography (protein A/G)
Conjugation:	HRP
Storage:	Store at -20°C as received.
Stability:	Stable for 12 months from date of receipt.
Gene Name:	sec1 family domain containing 1
Database Link:	NP_057190 Entrez Gene 54350 Rat Entrez Gene 76983 Mouse Entrez Gene 23256 Human Q8WVM8
Synonyms:	C14orf163; RA410; SLY1; SLY1P; STXBP1L2

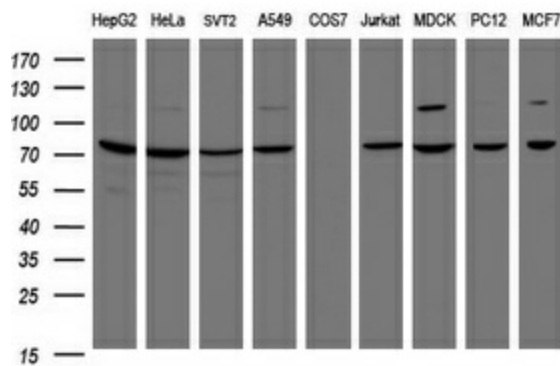


[View online »](#)

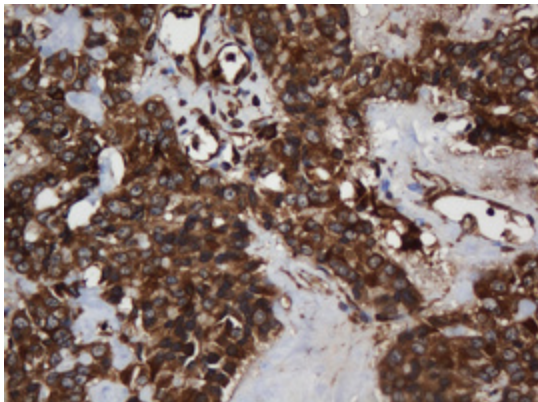
Product images:



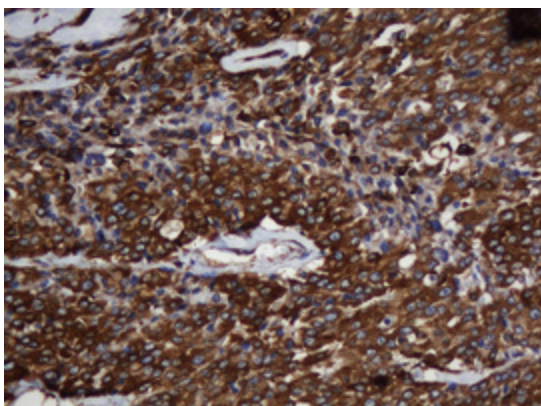
HEK293T cells were transfected with the pCMV6-ENTRY control (Left lane) or pCMV6-ENTRY SCFD1 ([RC217990], Right lane) cDNA for 48 hrs and lysed. Equivalent amounts of cell lysates (5 ug per lane) were separated by SDS-PAGE and immunoblotted with anti-SCFD1. Positive lysates [LY414181] (100ug) and [LC414181] (20ug) can be purchased separately from OriGene.



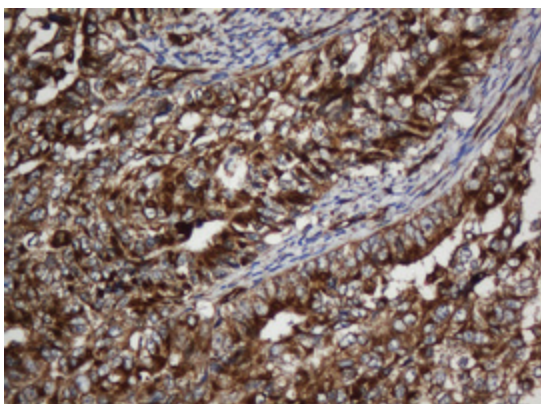
Western blot analysis of extracts (35ug) from 9 different cell lines by using anti-SCFD1 monoclonal antibody (HepG2: human; HeLa: human; SVT2: mouse; A549: human; COS7: monkey; Jurkat: human; MDCK: canine; PC12: rat; MCF7: human). Dilution: 1:2000



Immunohistochemical staining of paraffin-embedded Carcinoma of Human pancreas tissue using anti-SCFD1 mouse monoclonal antibody. (Heat-induced epitope retrieval by 10mM citric buffer, pH6.0, 120°C for 3min, [TA504691])



Immunohistochemical staining of paraffin-embedded Carcinoma of Human thyroid tissue using anti-SCFD1 mouse monoclonal antibody. (Heat-induced epitope retrieval by 10mM citric buffer, pH6.0, 120°C for 3min, [TA504691])



Immunohistochemical staining of paraffin-embedded Adenocarcinoma of Human endometrium tissue using anti-SCFD1 mouse monoclonal antibody. (Heat-induced epitope retrieval by 10mM citric buffer, pH6.0, 120°C for 3min, [TA504691])