

## Product datasheet for **TA504686AM**

### TBCC Mouse Monoclonal Antibody (Biotin conjugated) [Clone ID: OTI1B2]

#### Product data:

|                         |  |
|-------------------------|--|
| Product Type:           | Primary Antibodies   |
| Clone Name:             | OTI1B2   |
| Applications:           | WB   |
| Recommended Dilution:   | WB 1:2000~4000   |
| Reactivity:             | Human, Rat, Monkey, Mouse  |
| Host:                   | Mouse  |
| Isotype:                | IgG2a  |
| Clonality:              | Monoclonal   |
| Immunogen:              | Full length human recombinant protein of human TBCC(NP_003183) produced in HEK293T cell.   |
| Formulation:            | PBS (pH 7.3) containing 1% BSA, 50% glycerol and 0.02% sodium azide.   |
| Concentration:          | 0.5 mg/ml  |
| Purification:           | Purified from mouse ascites fluids or tissue culture supernatant by affinity chromatography (protein A/G)  |
| Conjugation:            | Biotin   |
| Storage:                | Store at -20°C as received.  |
| Stability:              | Stable for 12 months from date of receipt.   |
| Predicted Protein Size: | 39 kDa   |
| Gene Name:              | tubulin folding cofactor C   |
| Database Link:          | <a href="#">NP_003183</a><br><a href="#">Entrez Gene 72726 Mouse</a> <a href="#">Entrez Gene 316221 Rat</a> <a href="#">Entrez Gene 696997 Monkey</a> <a href="#">Entrez Gene 6903 Human</a><br><a href="#">Q15814</a> |



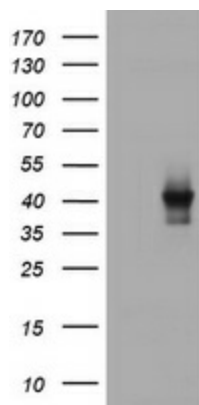
[View online »](#)

**Background:**

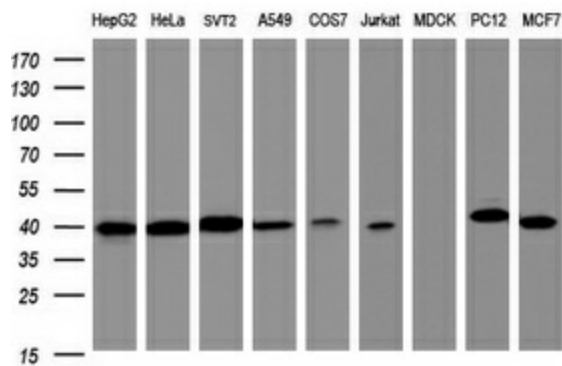
Cofactor C is one of four proteins (cofactors A, D, E, and C) involved in the pathway leading to correctly folded beta-tubulin from folding intermediates. Cofactors A and D are believed to play a role in capturing and stabilizing beta-tubulin intermediates in a quasi-native confirmation. Cofactor E binds to the cofactor D/beta-tubulin complex; interaction with cofactor C then causes the release of beta-tubulin polypeptides that are committed to the native state. [provided by RefSeq, Jul 2008]

**Synonyms:**

CFC

**Product images:**


HEK293T cells were transfected with the pCMV6-ENTRY control (Left lane) or pCMV6-ENTRY TBCC ([RC203563], Right lane) cDNA for 48 hrs and lysed. Equivalent amounts of cell lysates (5 ug per lane) were separated by SDS-PAGE and immunoblotted with anti-TBCC. Positive lysates [LY418844] (100ug) and [LC418844] (20ug) can be purchased separately from OriGene.



Western blot analysis of extracts (35ug) from 9 different cell lines by using anti-TBCC monoclonal antibody (HepG2: human; HeLa: human; SVT2: mouse; A549: human; COS7: monkey; Jurkat: human; MDCK: canine; PC12: rat; MCF7: human).