

Product datasheet for **TA504685S**

TBCC Mouse Monoclonal Antibody [Clone ID: OTI1G1]

Product data:

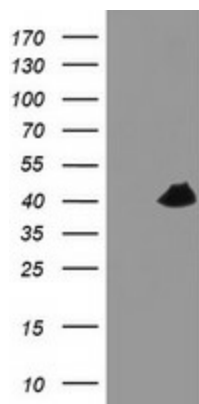
Product Type:	Primary Antibodies
Clone Name:	OTI1G1
Applications:	FC, IF, WB
Recommended Dilution:	WB 1:2000, IF 1:100, FLOW 1:100
Reactivity:	Human
Host:	Mouse
Isotype:	IgG1
Clonality:	Monoclonal
Immunogen:	Full length human recombinant protein of human TBCC(NP_003183) produced in HEK293T cell.
Formulation:	PBS (pH 7.3) containing 1% BSA, 50% glycerol and 0.02% sodium azide.
Concentration:	0.84 mg/ml
Purification:	Purified from mouse ascites fluids or tissue culture supernatant by affinity chromatography (protein A/G)
Conjugation:	Unconjugated
Storage:	Store at -20°C as received.
Stability:	Stable for 12 months from date of receipt.
Predicted Protein Size:	39 kDa
Gene Name:	tubulin folding cofactor C
Database Link:	NP_003183 Entrez Gene 6903 Human Q15814
Background:	Cofactor C is one of four proteins (cofactors A, D, E, and C) involved in the pathway leading to correctly folded beta-tubulin from folding intermediates. Cofactors A and D are believed to play a role in capturing and stabilizing beta-tubulin intermediates in a quasi-native confirmation. Cofactor E binds to the cofactor D/beta-tubulin complex; interaction with cofactor C then causes the release of beta-tubulin polypeptides that are committed to the native state. [provided by RefSeq]



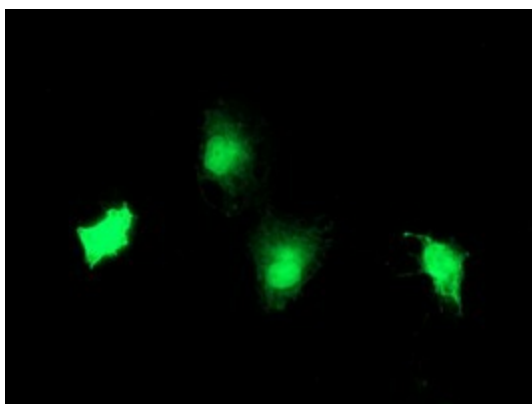
[View online »](#)

Synonyms: CFC

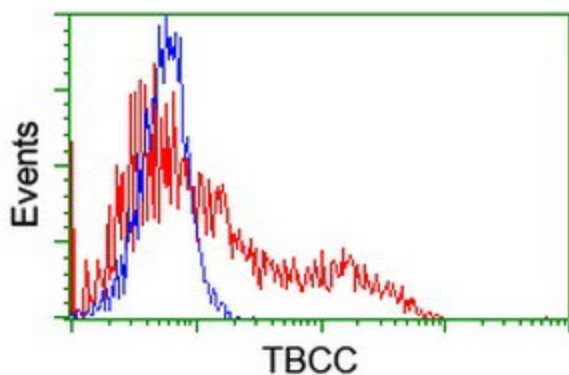
Product images:



HEK293T cells were transfected with the pCMV6-ENTRY control (Left lane) or pCMV6-ENTRY TBCC ([RC203563], Right lane) cDNA for 48 hrs and lysed. Equivalent amounts of cell lysates (5 ug per lane) were separated by SDS-PAGE and immunoblotted with anti-TBCC. Positive lysates [LY418844] (100ug) and [LC418844] (20ug) can be purchased separately from OriGene.



Anti-TBCC mouse monoclonal antibody ([TA504685]) immunofluorescent staining of COS7 cells transiently transfected by pCMV6-ENTRY TBCC ([RC203563]).



HEK293T cells transfected with either [RC203563] overexpress plasmid (Red) or empty vector control plasmid (Blue) were immunostained by anti-TBCC antibody ([TA504685]), and then analyzed by flow cytometry.