

## Product datasheet for **TA504684BM**

### UBE2E3 Mouse Monoclonal Antibody (HRP conjugated) [Clone ID: OTI4B4]

#### Product data:

|                         |   |
|-------------------------|---|
| Product Type:           | Primary Antibodies  |
| Clone Name:             | OTI4B4  |
| Applications:           | FC, IF, IHC, WB   |
| Recommended Dilution:   | WB 1:2000, IHC 1:150, IF 1:100, FLOW 1:100  |
| Reactivity:             | Human, Mouse, Rat   |
| Host:                   | Mouse   |
| Isotype:                | IgG1  |
| Clonality:              | Monoclonal  |
| Immunogen:              | Full length human recombinant protein of human UBE2E3(NP_006348) produced in E.coli.  |
| Formulation:            | PBS (pH 7.3) containing 1% BSA, 50% glycerol.   |
| Concentration:          | 0.5 mg/ml   |
| Purification:           | Purified from mouse ascites fluids or tissue culture supernatant by affinity chromatography (protein A/G)   |
| Conjugation:            | HRP   |
| Storage:                | Store at -20°C as received.   |
| Stability:              | Stable for 12 months from date of receipt.  |
| Predicted Protein Size: | 22.7 kDa  |
| Gene Name:              | ubiquitin conjugating enzyme E2 E3  |
| Database Link:          | <a href="#">NP_006348</a><br><a href="#">Entrez Gene 22193 Mouse</a> <a href="#">Entrez Gene 295686 Rat</a> <a href="#">Entrez Gene 10477 Human</a><br><a href="#">Q969T4</a> |



[View online »](#)

**Background:**

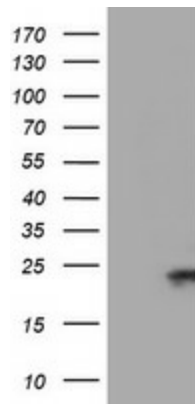
The modification of proteins with ubiquitin is an important cellular mechanism for targeting abnormal or short-lived proteins for degradation. Ubiquitination involves at least three classes of enzymes: ubiquitin-activating enzymes, or E1s, ubiquitin-conjugating enzymes, or E2s, and ubiquitin-protein ligases, or E3s. This gene encodes a member of the E2 ubiquitin-conjugating enzyme family. The encoded protein shares 100% sequence identity with the mouse and rat counterparts, which indicates that this enzyme is highly conserved in eukaryotes. Two alternatively spliced transcript variants encoding the same protein have been found for this gene. [provided by RefSeq]

**Synonyms:**

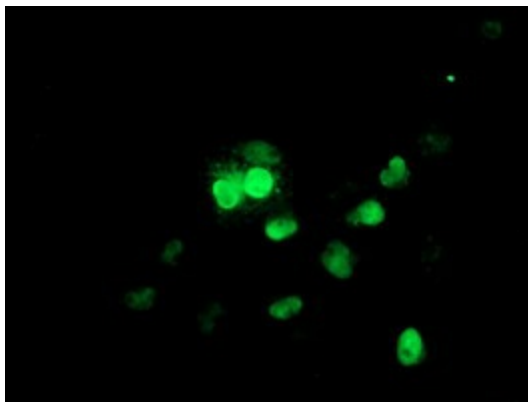
UBCH9; UbcM2

**Protein Pathways:**

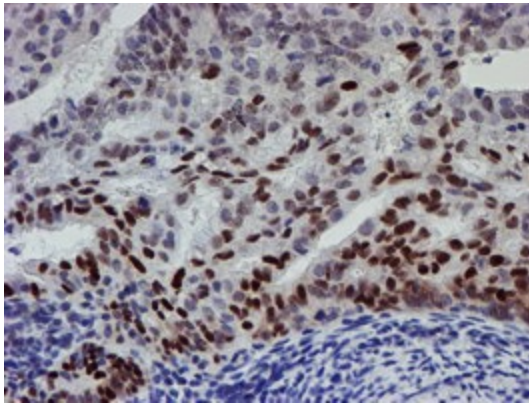
Ubiquitin mediated proteolysis

**Product images:**


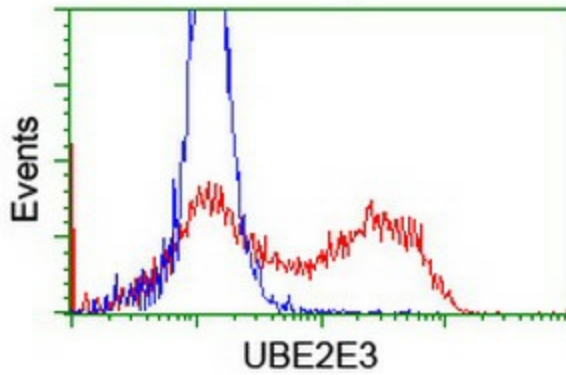
HEK293T cells were transfected with the pCMV6-ENTRY control (Left lane) or pCMV6-ENTRY UBE2E3 ([RC210328], Right lane) cDNA for 48 hrs and lysed. Equivalent amounts of cell lysates (5 ug per lane) were separated by SDS-PAGE and immunoblotted with anti-UBE2E3. Positive lysates [LY416697] (100ug) and [LC416697] (20ug) can be purchased separately from OriGene.



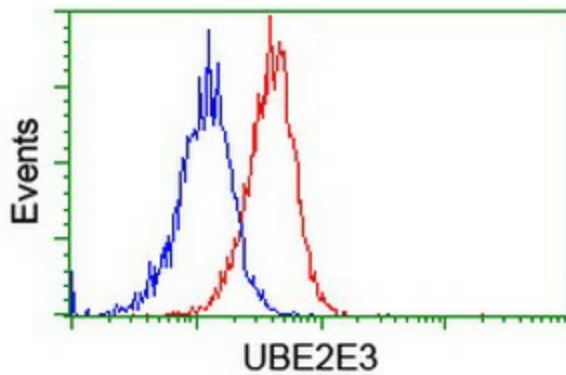
Western blot analysis of extracts (10ug) from HepG2 cell line by using anti-UBE2E3 monoclonal antibody at 1:200 dilution.



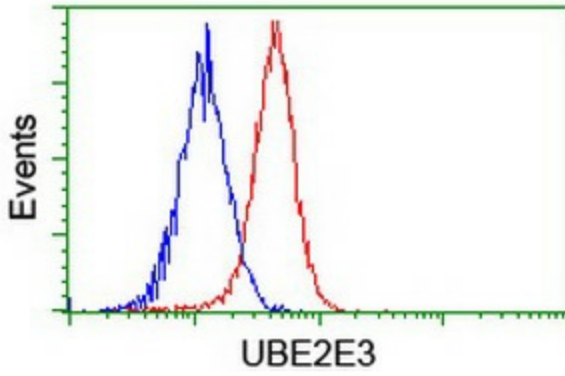
Immunohistochemical staining of paraffin-embedded Adenocarcinoma of Human endometrium tissue using anti-UBE2E3 mouse monoclonal antibody. (Heat-induced epitope retrieval by 10mM citric buffer, pH6.0, 100°C for 10min, [TA504684])



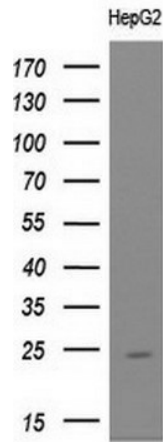
HEK293T cells transfected with either [RC210328] overexpress plasmid (Red) or empty vector control plasmid (Blue) were immunostained by anti-UBE2E3 antibody ([TA504684]), and then analyzed by flow cytometry.



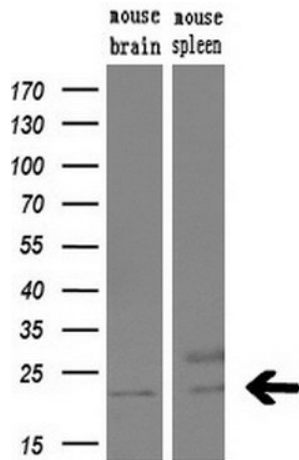
Flow cytometric Analysis of Jurkat cells, using anti-UBE2E3 antibody ([TA504684]), (Red), compared to a nonspecific negative control antibody, (Blue).



Flow cytometric Analysis of HeLa cells, using anti-UBE2E3 antibody ([TA504684]), (Red), compared to a nonspecific negative control antibody, (Blue).



Western blot analysis of extracts (10ug) from 1 cell line by using anti-UBE2E3 monoclonal antibody at 1:200 dilution.



Western blot analysis of extracts (10ug) from 2 different mouse tissues by using anti-UBE2E3 monoclonal antibody (1:200).