

Product datasheet for **TA504683S**

UBE2E3 Mouse Monoclonal Antibody [Clone ID: OTI4G4]

Product data:

Product Type:	Primary Antibodies
Clone Name:	OTI4G4
Applications:	FC, WB
Recommended Dilution:	WB 1:500~2000, FLOW 1:100
Reactivity:	Human, Mouse, Rat
Host:	Mouse
Isotype:	IgG2b
Clonality:	Monoclonal
Immunogen:	Full length human recombinant protein of human UBE2E3(NP_006348) produced in E.coli.
Formulation:	PBS (pH 7.3) containing 1% BSA, 50% glycerol and 0.02% sodium azide.
Concentration:	0.7 mg/ml
Purification:	Purified from mouse ascites fluids or tissue culture supernatant by affinity chromatography (protein A/G)
Conjugation:	Unconjugated
Storage:	Store at -20°C as received.
Stability:	Stable for 12 months from date of receipt.
Predicted Protein Size:	22.7 kDa
Gene Name:	ubiquitin conjugating enzyme E2 E3
Database Link:	NP_006348 Entrez Gene 22193 Mouse Entrez Gene 295686 Rat Entrez Gene 10477 Human Q969T4



[View online »](#)

Background:

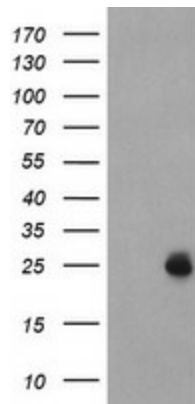
The modification of proteins with ubiquitin is an important cellular mechanism for targeting abnormal or short-lived proteins for degradation. Ubiquitination involves at least three classes of enzymes: ubiquitin-activating enzymes, or E1s, ubiquitin-conjugating enzymes, or E2s, and ubiquitin-protein ligases, or E3s. This gene encodes a member of the E2 ubiquitin-conjugating enzyme family. The encoded protein shares 100% sequence identity with the mouse and rat counterparts, which indicates that this enzyme is highly conserved in eukaryotes. Two alternatively spliced transcript variants encoding the same protein have been found for this gene. [provided by RefSeq]

Synonyms:

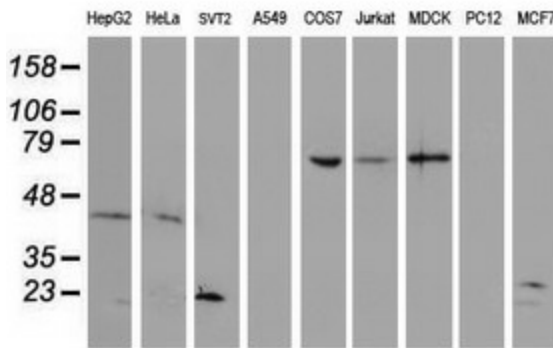
UBCH9; UbcM2

Protein Pathways:

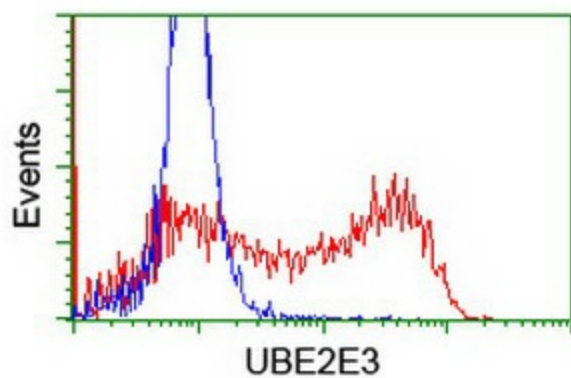
Ubiquitin mediated proteolysis

Product images:


HEK293T cells were transfected with the pCMV6-ENTRY control (Left lane) or pCMV6-ENTRY UBE2E3 ([RC210328], Right lane) cDNA for 48 hrs and lysed. Equivalent amounts of cell lysates (5 ug per lane) were separated by SDS-PAGE and immunoblotted with anti-UBE2E3. Positive lysates [LY416697] (100ug) and [LC416697] (20ug) can be purchased separately from OriGene.



Western blot analysis of extracts (35ug) from 9 different cell lines by using anti-UBE2E3 monoclonal antibody (HepG2: human; HeLa: human; SVT2: mouse; A549: human; COS7: monkey; Jurkat: human; MDCK: canine; PC12: rat; MCF7: human).



HEK293T cells transfected with either [RC210328] overexpress plasmid (Red) or empty vector control plasmid (Blue) were immunostained by anti-UBE2E3 antibody ([TA504683]), and then analyzed by flow cytometry.