

Product datasheet for **TA504676M**

Carboxypeptidase A2 (CPA2) Mouse Monoclonal Antibody [Clone ID: OTI2E7]

Product data:

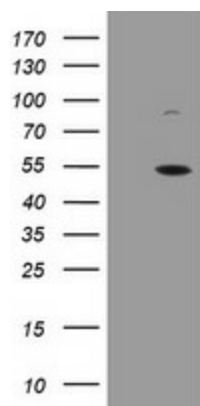
| | |
|-------------------------|---|
| Product Type: | Primary Antibodies |
| Clone Name: | OTI2E7 |
| Applications: | IF, WB |
| Recommended Dilution: | WB 1:2000, IF 1:100 |
| Reactivity: | Human, Mouse, Rat |
| Host: | Mouse |
| Isotype: | IgG1 |
| Clonality: | Monoclonal |
| Immunogen: | Full length human recombinant protein of human CPA2(NP_001860) produced in HEK293T cell. |
| Formulation: | PBS (pH 7.3) containing 1% BSA, 50% glycerol and 0.02% sodium azide. |
| Concentration: | 1 mg/ml |
| Purification: | Purified from mouse ascites fluids or tissue culture supernatant by affinity chromatography (protein A/G) |
| Conjugation: | Unconjugated |
| Storage: | Store at -20°C as received. |
| Stability: | Stable for 12 months from date of receipt. |
| Predicted Protein Size: | 44.9 kDa |
| Gene Name: | carboxypeptidase A2 |
| Database Link: | NP_001860 Entrez Gene 232680 Mouse Entrez Gene 296959 Rat Entrez Gene 1358 Human P48052 |
| Background: | Three different forms of human pancreatic procarboxypeptidase A have been isolated. The encoded protein represents the A2 form, which is a monomeric protein with different biochemical properties from the A1 and A3 forms. The A2 form of pancreatic procarboxypeptidase acts on aromatic C-terminal residues and is a secreted protein. [provided by RefSeq] |


[View online »](#)

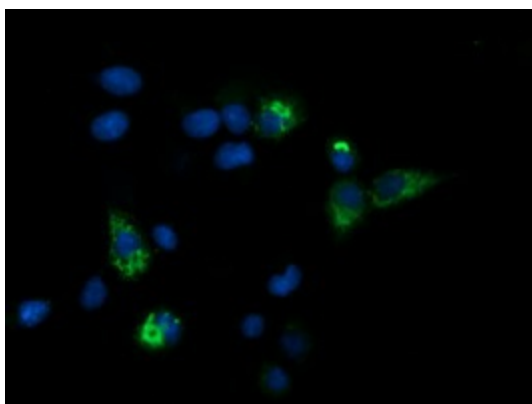
Synonyms: carboxypeptidase A2 (pancreatic)

Protein Families: Druggable Genome, Protease, Secreted Protein

Product images:



HEK293T cells were transfected with the pCMV6-ENTRY control (Left lane) or pCMV6-ENTRY CPA2 ([RC229208], Right lane) cDNA for 48 hrs and lysed. Equivalent amounts of cell lysates (5 ug per lane) were separated by SDS-PAGE and immunoblotted with anti-CPA2. Positive lysates [LY419697] (100ug) and [LC419697] (20ug) can be purchased separately from OriGene.



Anti-CPA2 mouse monoclonal antibody ([TA504676]) immunofluorescent staining of COS7 cells transiently transfected by pCMV6-ENTRY CPA2 ([RC202719]).