

## Product datasheet for **TA504675AM**

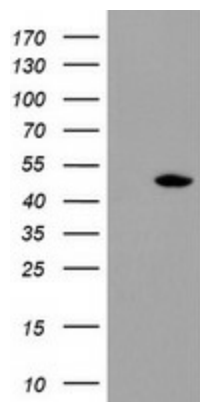
### **TDO2 Mouse Monoclonal Antibody (Biotin conjugated) [Clone ID: OTI1B1]**

#### **Product data:**

|                         |   |
|-------------------------|---|
| Product Type:           | Primary Antibodies  |
| Clone Name:             | OTI1B1  |
| Applications:           | WB  |
| Recommended Dilution:   | WB 1:1000   |
| Reactivity:             | Human, Mouse, Rat   |
| Host:                   | Mouse   |
| Isotype:                | IgG1  |
| Clonality:              | Monoclonal  |
| Immunogen:              | Full length human recombinant protein of human TDO2(NP_005642) produced in HEK293T cell.  |
| Formulation:            | PBS (pH 7.3) containing 1% BSA, 50% glycerol and 0.02% sodium azide.  |
| Concentration:          | 0.5 mg/ml   |
| Purification:           | Purified from mouse ascites fluids or tissue culture supernatant by affinity chromatography (protein A/G)   |
| Conjugation:            | Biotin  |
| Storage:                | Store at -20°C as received.   |
| Stability:              | Stable for 12 months from date of receipt.  |
| Predicted Protein Size: | 47.7 kDa  |
| Gene Name:              | tryptophan 2,3-dioxygenase  |
| Database Link:          | <a href="#">NP_005642</a><br><a href="#">Entrez Gene 56720 Mouse</a> <a href="#">Entrez Gene 64206 Rat</a> <a href="#">Entrez Gene 6999 Human</a><br><a href="#">P48775</a>                     |
| Background:             | Tryptophan 2,3-dioxygenase (EC 1.13.11.11) plays a role in catalyzing the first and rat-limiting step in the kynurenine pathway, the major pathway of tryptophan metabolism. [supplied by OMIM] |
| Synonyms:               | TDO; TO; TPH2; TRPO   |
| Protein Pathways:       | Metabolic pathways, Tryptophan metabolism   |



[View online »](#)

**Product images:**

HEK293T cells were transfected with the pCMV6-ENTRY control (Left lane) or pCMV6-ENTRY TDO2 ([RC202777], Right lane) cDNA for 48 hrs and lysed. Equivalent amounts of cell lysates (5 ug per lane) were separated by SDS-PAGE and immunoblotted with anti-TDO2. Positive lysates [LY401726] (100ug) and [LC401726] (20ug) can be purchased separately from OriGene.