

## Product datasheet for **TA504665AM**

### **METT10D (METTL16) Mouse Monoclonal Antibody (Biotin conjugated) [Clone ID: OTI3E8]**

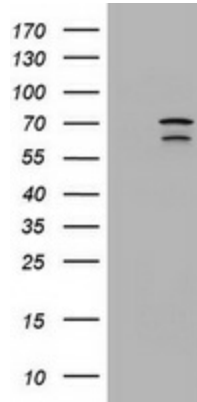
#### **Product data:**

Product Type:	Primary Antibodies
Clone Name:	OTI3E8
Applications:	IHC, WB
Recommended Dilution:	WB 1:2000, IHC 1:500
Reactivity:	Human, Mouse
Host:	Mouse
Isotype:	IgG1
Clonality:	Monoclonal
Immunogen:	Full length human recombinant protein of human METT10D(NP_076991) produced in HEK293T cell.
Formulation:	PBS (pH 7.3) containing 1% BSA, 50% glycerol and 0.02% sodium azide.
Concentration:	0.5 mg/ml
Purification:	Purified from mouse ascites fluids or tissue culture supernatant by affinity chromatography (protein A/G)
Conjugation:	Biotin
Storage:	Store at -20°C as received.
Stability:	Stable for 12 months from date of receipt.
Predicted Protein Size:	63.4 kDa
Gene Name:	methyltransferase 16, N6-methyladenosine
Database Link:	<a href="#">NP_076991</a> <a href="#">Entrez Gene 67493 Mouse</a> <a href="#">Entrez Gene 79066 Human</a> <a href="#">Q86W50</a>
Synonyms:	METT10D

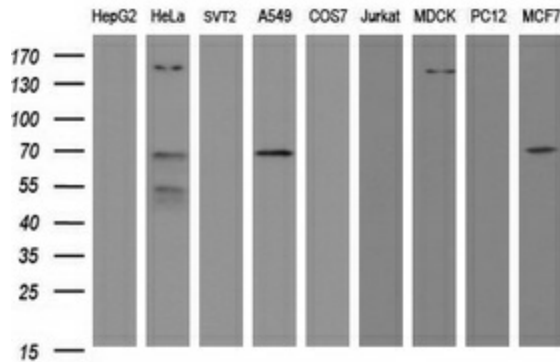


[View online »](#)

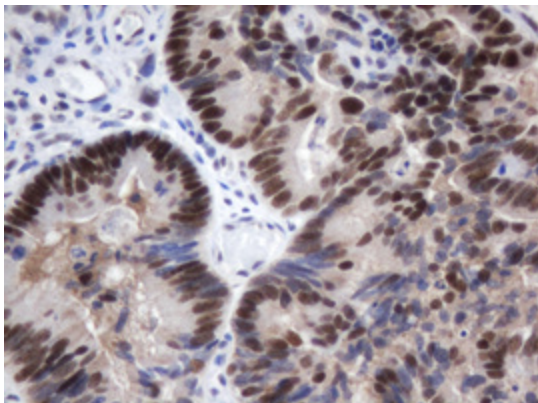
**Product images:**



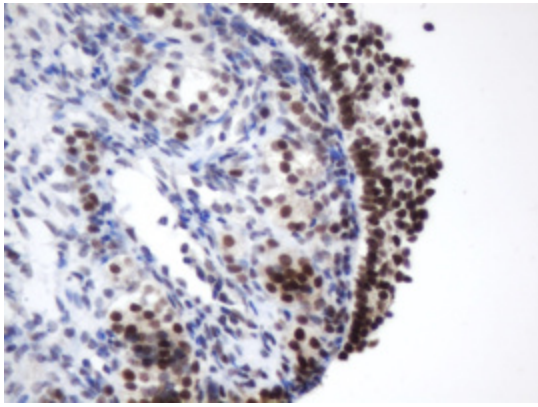
HEK293T cells were transfected with the pCMV6-ENTRY control (Left lane) or pCMV6-ENTRY METT10D ([RC208648], Right lane) cDNA for 48 hrs and lysed. Equivalent amounts of cell lysates (5 ug per lane) were separated by SDS-PAGE and immunoblotted with anti-METT10D. Positive lysates [LY411358] (100ug) and [LC411358] (20ug) can be purchased separately from OriGene.



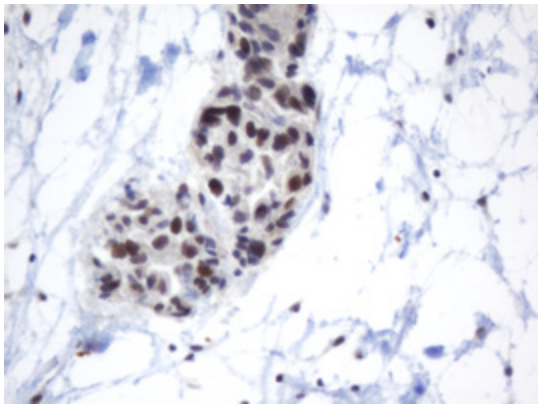
Western blot analysis of extracts (35ug) from 9 different cell lines by using anti-METT10D monoclonal antibody (HepG2: human; HeLa: human; SVT2: mouse; A549: human; COS7: monkey; Jurkat: human; MDCK: canine; PC12: rat; MCF7: human).



Immunohistochemical staining of paraffin-embedded Adenocarcinoma of Human colon tissue using anti-METT10D mouse monoclonal antibody. (Heat-induced epitope retrieval by 10mM citric buffer, pH6.0, 120°C for 3min, [TA504665])



Immunohistochemical staining of paraffin-embedded Human Ovary tissue within the normal limits using anti-METT10D mouse monoclonal antibody. (Heat-induced epitope retrieval by 10mM citric buffer, pH6.0, 120°C for 3min, [TA504665])



Immunohistochemical staining of paraffin-embedded Adenocarcinoma of Human ovary tissue using anti-METT10D mouse monoclonal antibody. (Heat-induced epitope retrieval by 10mM citric buffer, pH6.0, 120°C for 3min, [TA504665])