

## Product datasheet for **TA504664AM**

### SPINT1 Mouse Monoclonal Antibody (Biotin conjugated) [Clone ID: OTI1D2]

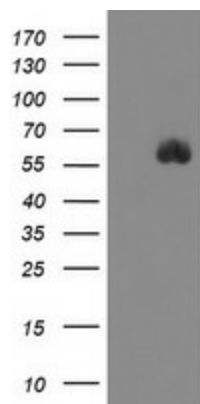
#### Product data:

Product Type:	Primary Antibodies
Clone Name:	OTI1D2
Applications:	FC, WB
Recommended Dilution:	WB 1:2000, FLOW 1:100
Reactivity:	Human
Host:	Mouse
Isotype:	IgG1
Clonality:	Monoclonal
Immunogen:	Full length human recombinant protein of human SPINT1(NP_857593) produced in HEK293T cell.
Formulation:	PBS (pH 7.3) containing 1% BSA, 50% glycerol and 0.02% sodium azide.
Concentration:	0.5 mg/ml
Purification:	Purified from mouse ascites fluids or tissue culture supernatant by affinity chromatography (protein A/G)
Conjugation:	Biotin
Storage:	Store at -20°C as received.
Stability:	Stable for 12 months from date of receipt.
Gene Name:	serine peptidase inhibitor, Kunitz type 1
Database Link:	<a href="#">NP_857593</a> <a href="#">Entrez Gene 6692 Human</a> <a href="#">O43278</a>
Background:	The protein encoded by this gene is a member of the Kunitz family of serine protease inhibitors. The protein is a potent inhibitor specific for HGF activator and is thought to be involved in the regulation of the proteolytic activation of HGF in injured tissues. Alternative splicing results in multiple variants encoding different isoforms. [provided by RefSeq]
Synonyms:	HAI; HAI1; MANSC2
Protein Families:	Druggable Genome, Secreted Protein, Transmembrane

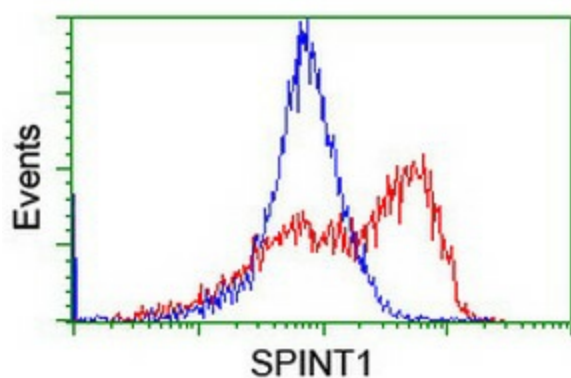


[View online »](#)

## Product images:



HEK293T cells were transfected with the pCMV6-ENTRY control (Left lane) or pCMV6-ENTRY SPINT1 ([RC218993], Right lane) cDNA for 48 hrs and lysed. Equivalent amounts of cell lysates (5 ug per lane) were separated by SDS-PAGE and immunoblotted with anti-SPINT1. Positive lysates [LY405735] (100ug) and [LC405735] (20ug) can be purchased separately from OriGene.



HEK293T cells transfected with either [RC218993] overexpress plasmid (Red) or empty vector control plasmid (Blue) were immunostained by anti-SPINT1 antibody ([TA504664]), and then analyzed by flow cytometry.