

## Product datasheet for **TA504659AM**

### **CRYZL1 Mouse Monoclonal Antibody (Biotin conjugated) [Clone ID: OTI2F9]**

#### **Product data:**

|                                |   |
|--------------------------------|---|
| <b>Product Type:</b>           | Primary Antibodies  |
| <b>Clone Name:</b>             | OTI2F9  |
| <b>Applications:</b>           | FC, IF, IHC, WB   |
| <b>Recommended Dilution:</b>   | WB 1:500~2000, IHC 1:150, IF 1:100, FLOW 1:100  |
| <b>Reactivity:</b>             | Human, Monkey, Mouse, Rat   |
| <b>Host:</b>                   | Mouse   |
| <b>Isotype:</b>                | IgG2b   |
| <b>Clonality:</b>              | Monoclonal  |
| <b>Immunogen:</b>              | Full length human recombinant protein of human CRYZL1(NP_665857) produced in HEK293T cell.  |
| <b>Formulation:</b>            | PBS (pH 7.3) containing 1% BSA, 50% glycerol and 0.02% sodium azide.  |
| <b>Concentration:</b>          | 0.5 mg/ml   |
| <b>Purification:</b>           | Purified from mouse ascites fluids or tissue culture supernatant by affinity chromatography (protein A/G)   |
| <b>Conjugation:</b>            | Biotin  |
| <b>Storage:</b>                | Store at -20°C as received.   |
| <b>Stability:</b>              | Stable for 12 months from date of receipt.  |
| <b>Predicted Protein Size:</b> | 38.5 kDa  |
| <b>Gene Name:</b>              | crystallin zeta like 1  |
| <b>Database Link:</b>          | <a href="#">NP_665857</a><br><a href="#">Entrez Gene 66609 Mouse</a> <a href="#">Entrez Gene 288256 Rat</a> <a href="#">Entrez Gene 698723 Monkey</a> <a href="#">Entrez Gene 9946 Human</a><br><a href="#">O95825</a>  |
| <b>Background:</b>             | This gene encodes a protein that has sequence similarity to zeta crystallin, also known as quinone oxidoreductase. This zeta crystallin-like protein also contains an NAD(P)H binding site. Alternatively spliced transcript variants have been observed but their full-length nature has not been completely determined. [provided by RefSeq]. COMPLETENESS: complete on the 3' end. |

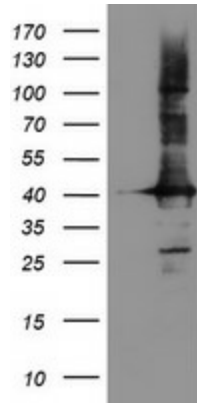


[View online »](#)

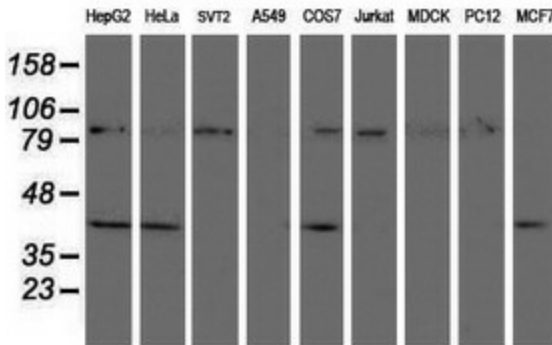
Synonyms: 4P11; QOH-1

Protein Families: Druggable Genome

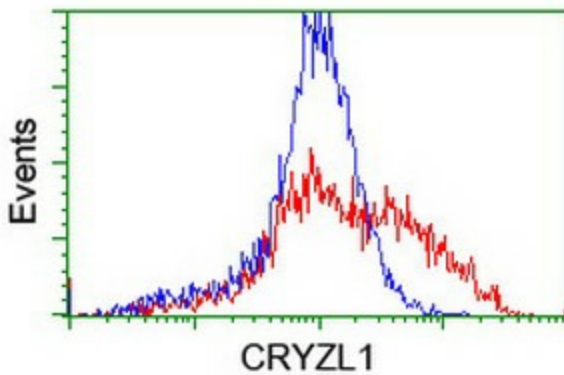
**Product images:**



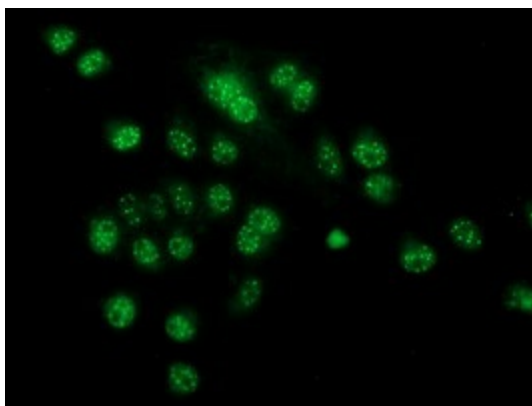
HEK293T cells were transfected with the pCMV6-ENTRY control (Cat# [PS100001], Left lane) or pCMV6-ENTRY CRYZL1 (Cat# [RC205953], Right lane) cDNA for 48 hrs and lysed. Equivalent amounts of cell lysates (5 ug per lane) were separated by SDS-PAGE and immunoblotted with anti-CRYZL1 (Cat# [TA504659]). Positive lysates [LY407853] (100ug) and [LC407853] (20ug) can be purchased separately from OriGene.



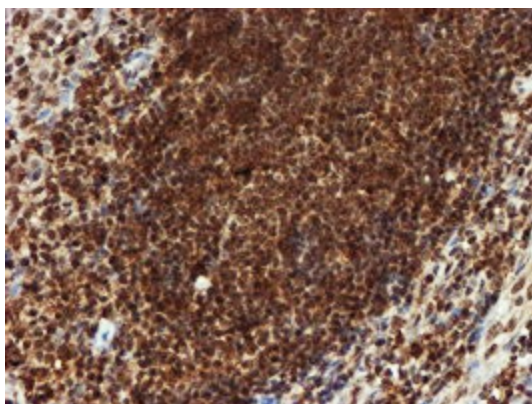
Western blot analysis of extracts (35ug) from 9 different cell lines by using anti-CRYZL1 monoclonal antibody (HepG2: human; HeLa: human; SVT2: mouse; A549: human; COS7: monkey; Jurkat: human; MDCK: canine; PC12: rat; MCF7: human).



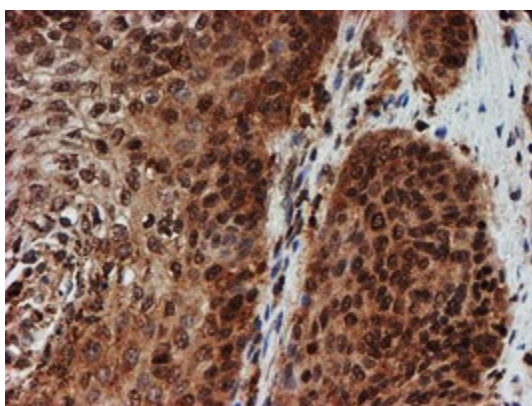
HEK293T cells transfected with either [RC205953] overexpress plasmid (Red) or empty vector control plasmid (Blue) were immunostained by anti-CRYZL1 antibody ([TA504659]), and then analyzed by flow cytometry.



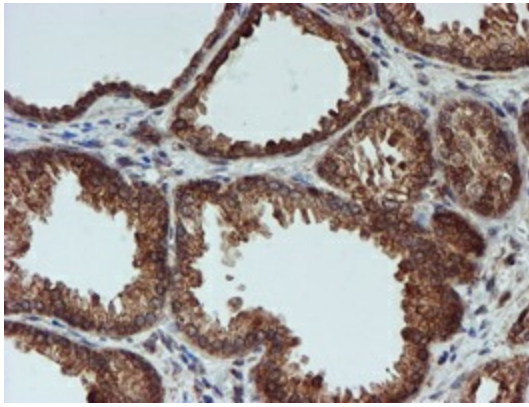
Anti-CRYZL1 mouse monoclonal antibody ([TA504659]) immunofluorescent staining of COS7 cells transiently transfected by pCMV6-ENTRY CRYZL1 ([RC205953]).



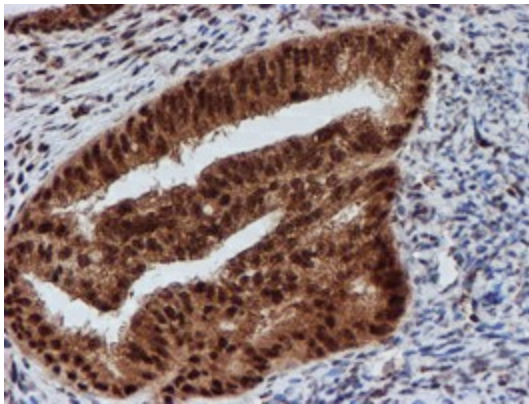
Immunohistochemical staining of paraffin-embedded Human tonsil within the normal limits using anti-CRYZL1 mouse monoclonal antibody. (Heat-induced epitope retrieval by 10mM citric buffer, pH6.0, 100°C for 10min, [TA504659])



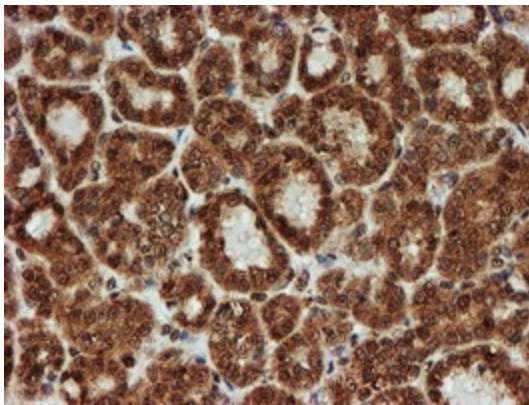
Immunohistochemical staining of paraffin-embedded Carcinoma of Human bladder tissue using anti-CRYZL1 mouse monoclonal antibody. (Heat-induced epitope retrieval by 10mM citric buffer, pH6.0, 100°C for 10min, [TA504659])



Immunohistochemical staining of paraffin-embedded Human prostate tissue within the normal limits using anti-CRYZL1 mouse monoclonal antibody. (Heat-induced epitope retrieval by 10mM citric buffer, pH6.0, 100°C for 10min, [TA504659])

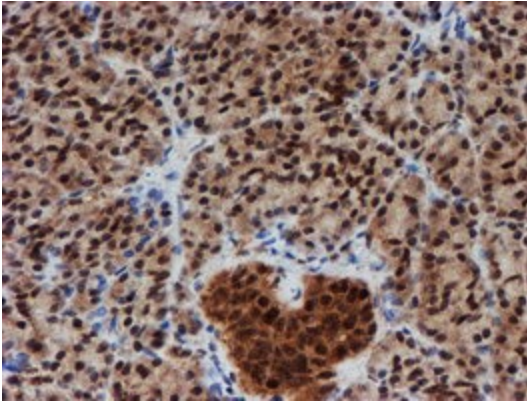


Immunohistochemical staining of paraffin-embedded Adenocarcinoma of Human endometrium tissue using anti-CRYZL1 mouse monoclonal antibody. (Heat-induced epitope retrieval by 10mM citric buffer, pH6.0, 100°C for 10min, [TA504659])

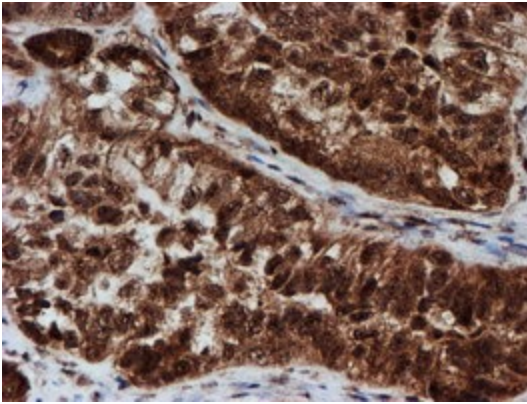


Immunohistochemical staining of paraffin-embedded Carcinoma of Human thyroid tissue using anti-CRYZL1 mouse monoclonal antibody. (Heat-induced epitope retrieval by 10mM citric buffer, pH6.0, 100°C for 10min, [TA504659])

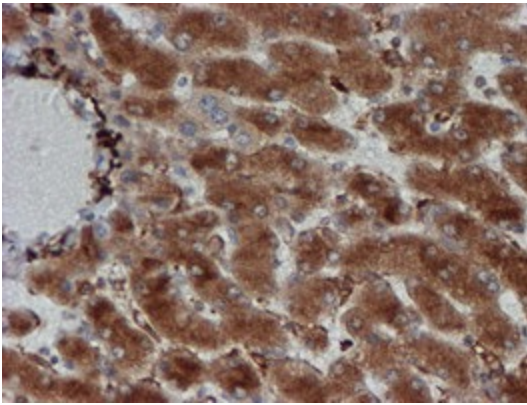




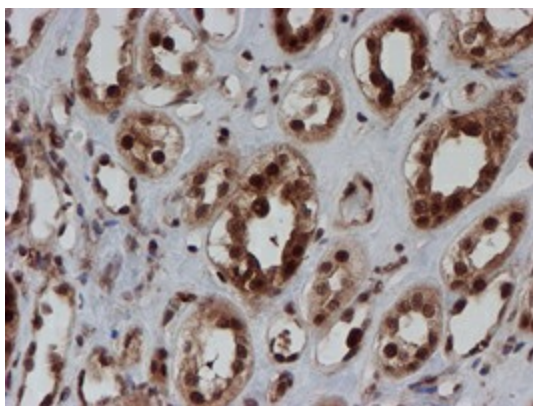
Immunohistochemical staining of paraffin-embedded Human pancreas tissue within the normal limits using anti-CRYZL1 mouse monoclonal antibody. (Heat-induced epitope retrieval by 10mM citric buffer, pH6.0, 100°C for 10min, [TA504659])



Immunohistochemical staining of paraffin-embedded Adenocarcinoma of Human ovary tissue using anti-CRYZL1 mouse monoclonal antibody. (Heat-induced epitope retrieval by 10mM citric buffer, pH6.0, 100°C for 10min, [TA504659])



Immunohistochemical staining of paraffin-embedded Human liver tissue within the normal limits using anti-CRYZL1 mouse monoclonal antibody. (Heat-induced epitope retrieval by 10mM citric buffer, pH6.0, 100°C for 10min, [TA504659])



Immunohistochemical staining of paraffin-embedded Human Kidney tissue within the normal limits using anti-CRYZL1 mouse monoclonal antibody. (Heat-induced epitope retrieval by 10mM citric buffer, pH6.0, 100°C for 10min, [TA504659])