

Product datasheet for **TA504644BM**

Carboxypeptidase A2 (CPA2) Mouse Monoclonal Antibody (HRP conjugated) [Clone ID: OTI1A1]

Product data:

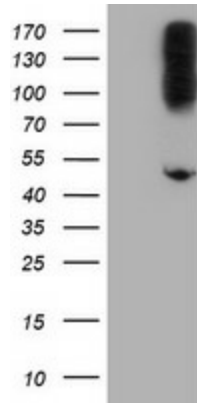
Product Type:	Primary Antibodies
Clone Name:	OTI1A1
Applications:	FC, IF, IHC, WB
Recommended Dilution:	WB 1:2000, IHC 1:150, IF 1:100, FLOW 1:100
Reactivity:	Human, Mouse, Rat
Host:	Mouse
Isotype:	IgG2b
Clonality:	Monoclonal
Immunogen:	Full length human recombinant protein of human CPA2(NP_001860) produced in HEK293T cell.
Formulation:	PBS (pH 7.3) containing 1% BSA, 50% glycerol.
Concentration:	0.5 mg/ml
Purification:	Purified from mouse ascites fluids or tissue culture supernatant by affinity chromatography (protein A/G)
Conjugation:	HRP
Storage:	Store at -20°C as received.
Stability:	Stable for 12 months from date of receipt.
Predicted Protein Size:	44.9 kDa
Gene Name:	carboxypeptidase A2
Database Link:	NP_001860 Entrez Gene 232680 MouseEntrez Gene 296959 RatEntrez Gene 1358 Human P48052
Background:	Three different forms of human pancreatic procarboxypeptidase A have been isolated. The encoded protein represents the A2 form, which is a monomeric protein with different biochemical properties from the A1 and A3 forms. The A2 form of pancreatic procarboxypeptidase acts on aromatic C-terminal residues and is a secreted protein. [provided by RefSeq]



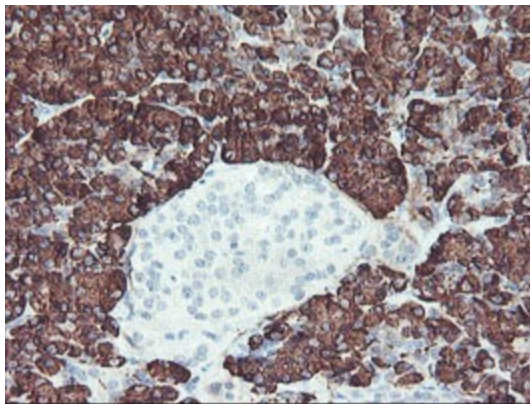
[View online »](#)

Synonyms: carboxypeptidase A2 (pancreatic)
Protein Families: Druggable Genome, Protease, Secreted Protein

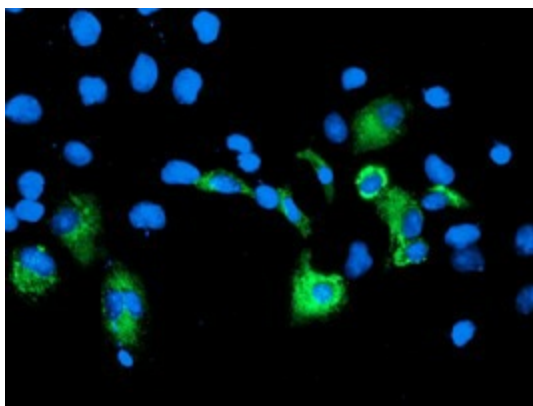
Product images:



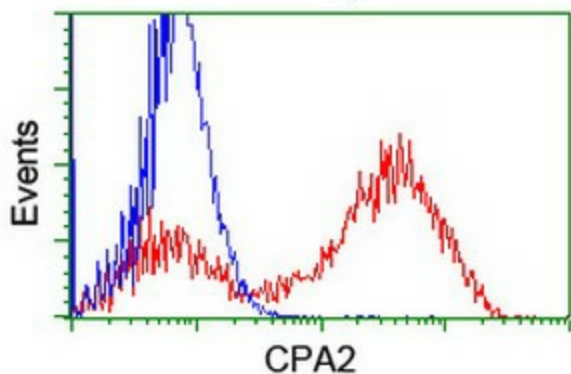
HEK293T cells were transfected with the pCMV6-ENTRY control (Cat# [PS100001], Left lane) or pCMV6-ENTRY CPA2 (Cat# [RC229208], Right lane) cDNA for 48 hrs and lysed. Equivalent amounts of cell lysates (5 ug per lane) were separated by SDS-PAGE and immunoblotted with anti-CPA2 (Cat# [TA504644]). Positive lysates [LY419697] (100ug) and [LC419697] (20ug) can be purchased separately from OriGene.



Immunohistochemical staining of paraffin-embedded Human pancreas tissue within the normal limits using anti-CPA2 mouse monoclonal antibody. (Heat-induced epitope retrieval by 10mM citric buffer, pH6.0, 100°C for 10min, [TA504644])



Anti-CPA2 mouse monoclonal antibody ([TA504644]) immunofluorescent staining of COS7 cells transiently transfected by pCMV6-ENTRY CPA2 ([RC202719]).



HEK293T cells transfected with either [RC202719] overexpress plasmid (Red) or empty vector control plasmid (Blue) were immunostained by anti-CPA2 antibody ([TA504644]), and then analyzed by flow cytometry.