

## Product datasheet for TA504641M

### ATRIP Mouse Monoclonal Antibody [Clone ID: OTI5E7]

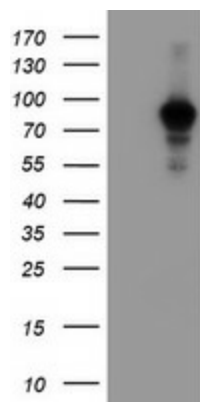
#### Product data:

|                         |   |
|-------------------------|---|
| Product Type:           | Primary Antibodies  |
| Clone Name:             | OTI5E7  |
| Applications:           | FC, IF, IHC, WB   |
| Recommended Dilution:   | WB 1:500~2000, IHC 1:150, IF 1:100, FLOW 1:100  |
| Reactivity:             | Human, Dog  |
| Host:                   | Mouse   |
| Isotype:                | IgG2a   |
| Clonality:              | Monoclonal  |
| Immunogen:              | Human recombinant protein fragment corresponding to amino acids 42-309 of human ATRIP(NP_569055) produced in E.coli.  |
| Formulation:            | PBS (pH 7.3) containing 1% BSA, 50% glycerol and 0.02% sodium azide.  |
| Concentration:          | 1.13 mg/ml  |
| Purification:           | Purified from mouse ascites fluids or tissue culture supernatant by affinity chromatography (protein A/G)   |
| Conjugation:            | Unconjugated  |
| Storage:                | Store at -20°C as received.   |
| Stability:              | Stable for 12 months from date of receipt.  |
| Predicted Protein Size: | 85.7 kDa  |
| Gene Name:              | ATR interacting protein   |
| Database Link:          | <a href="#">NP_569055</a><br><a href="#">Entrez Gene 608504 Dog</a> <a href="#">Entrez Gene 84126 Human</a><br><a href="#">Q8WXE1</a>   |
| Background:             | The product of this gene is an essential component of the DNA damage checkpoint, and binds to single-stranded DNA coated with replication protein A that accumulates at sites of DNA damage. The encoded protein interacts with the ataxia telangiectasia and Rad3 related protein, a checkpoint kinase, resulting in accumulation of the kinase at intranuclear foci induced by DNA damage. Multiple transcript variants encoding different isoforms have been found for this gene. [provided by RefSeq] |

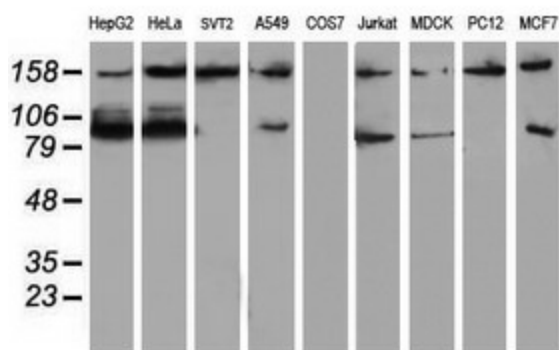

[View online »](#)

**Synonyms:** DKFZp762J2115; FLJ12343; MGC20625; MGC21482; MGC26740

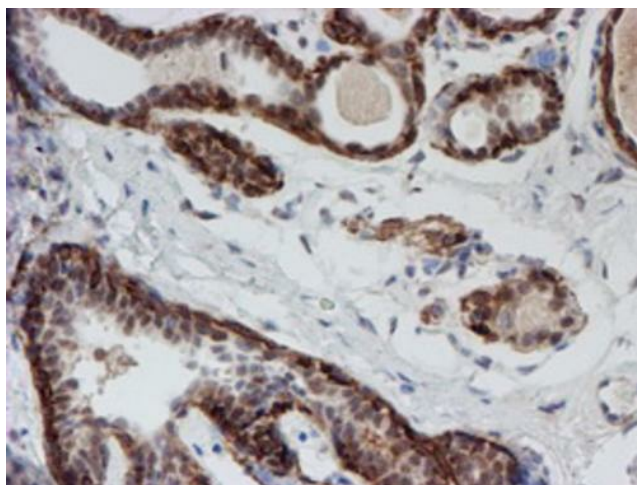
## Product images:



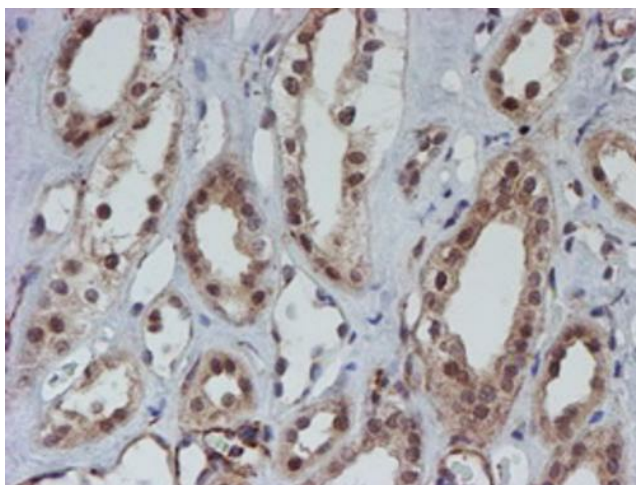
HEK293T cells were transfected with the pCMV6-ENTRY control (Cat# [PS100001], Left lane) or pCMV6-ENTRY ATRIP (Cat# [RC223562], Right lane) cDNA for 48 hrs and lysed. Equivalent amounts of cell lysates (5 ug per lane) were separated by SDS-PAGE and immunoblotted with anti-ATRIP (Cat# [TA504641]). Positive lysates [LY408977] (100ug) and [LC408977] (20ug) can be purchased separately from OriGene.



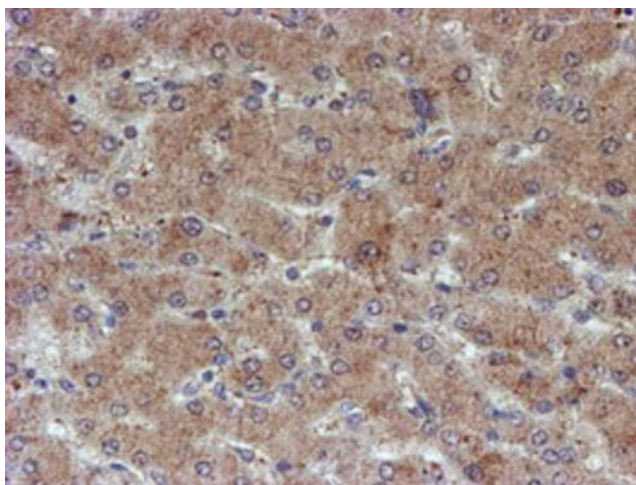
Western blot analysis of extracts (35ug) from 9 different cell lines by using anti-ATRIP monoclonal antibody (HepG2: human; HeLa: human; SVT2: mouse; A549: human; COS7: monkey; Jurkat: human; MDCK: canine; PC12: rat; MCF7: human).



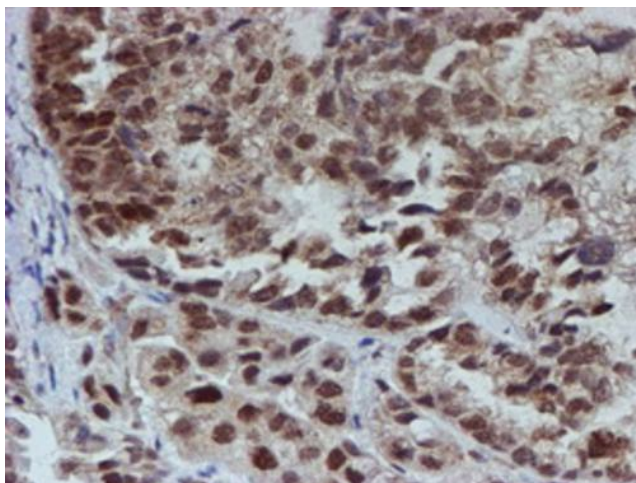
Immunohistochemical staining of paraffin-embedded Human breast tissue within the normal limits using anti-ATRIP mouse monoclonal antibody. Heat-induced epitope retrieval by EDTA solution buffer pH 8.0 at 120°C for 3 min.



Immunohistochemical staining of paraffin-embedded Human Kidney tissue within the normal limits using anti-ATRIP mouse monoclonal antibody. Heat-induced epitope retrieval by EDTA solution buffer pH 8.0 at 120°C for 3 min.

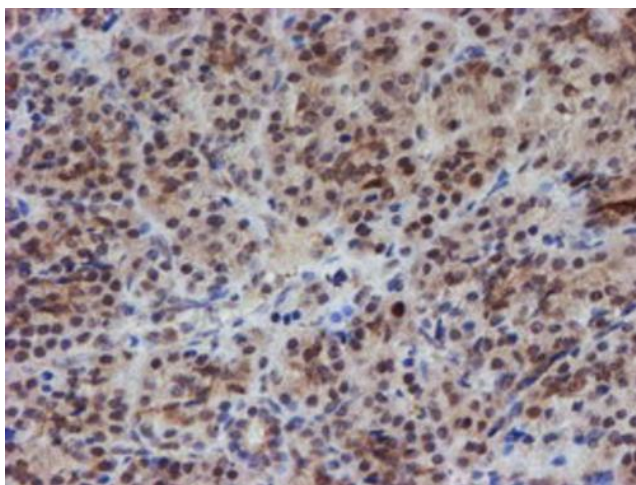


Immunohistochemical staining of paraffin-embedded Human liver tissue within the normal limits using anti-ATRIP mouse monoclonal antibody. Heat-induced epitope retrieval by EDTA solution buffer pH 8.0 at 120°C for 3 min.

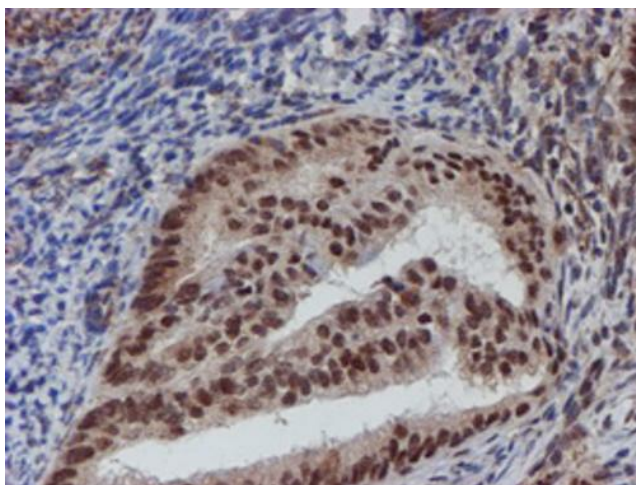


Immunohistochemical staining of paraffin-embedded Adenocarcinoma of Human ovary tissue using anti-ATRIP mouse monoclonal antibody. Heat-induced epitope retrieval by EDTA solution buffer pH 8.0 at 120°C for 3 min.

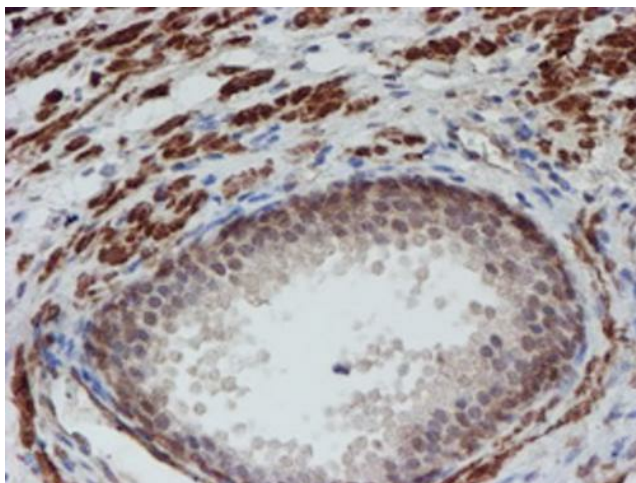




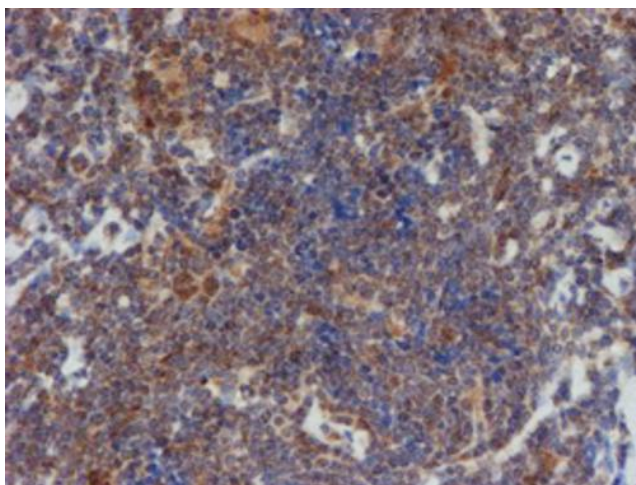
Immunohistochemical staining of paraffin-embedded Human pancreas tissue within the normal limits using anti-ATRIP mouse monoclonal antibody. Heat-induced epitope retrieval by EDTA solution buffer pH 8.0 at 120°C for 3 min.



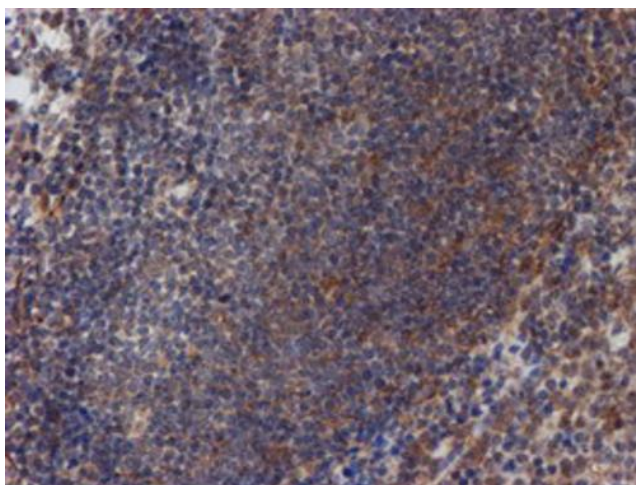
Immunohistochemical staining of paraffin-embedded Adenocarcinoma of Human endometrium tissue using anti-ATRIP mouse monoclonal antibody. Heat-induced epitope retrieval by EDTA solution buffer pH 8.0 at 120°C for 3 min.



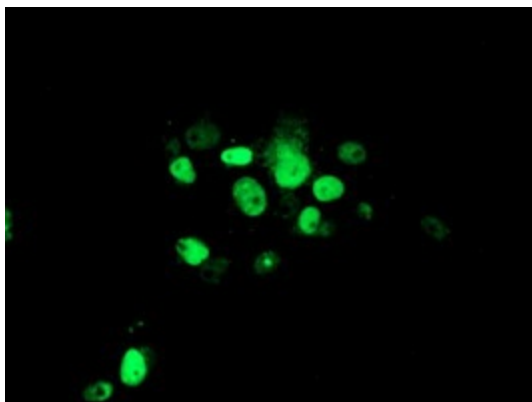
Immunohistochemical staining of paraffin-embedded Human prostate tissue within the normal limits using anti-ATRIP mouse monoclonal antibody. Heat-induced epitope retrieval by EDTA solution buffer pH 8.0 at 120°C for 3 min.



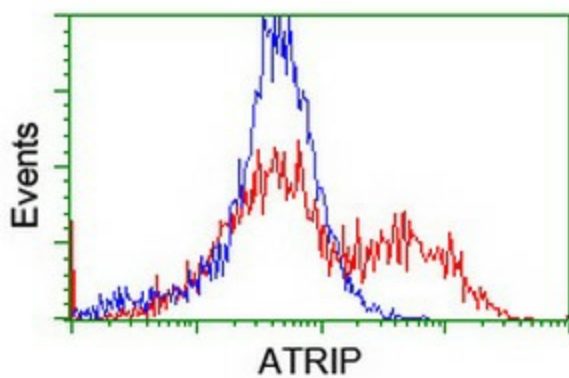
Immunohistochemical staining of paraffin-embedded Human lymphoma tissue using anti-ATRIP mouse monoclonal antibody. Heat-induced epitope retrieval by EDTA solution buffer pH 8.0 at 120°C for 3 min.



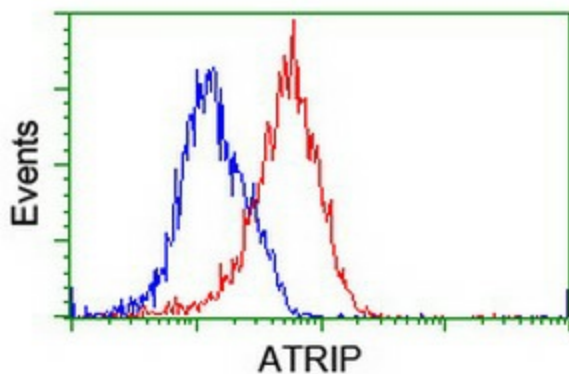
Immunohistochemical staining of paraffin-embedded Human tonsil within the normal limits using anti-ATRIP mouse monoclonal antibody. Heat-induced epitope retrieval by EDTA solution buffer pH 8.0 at 120°C for 3 min.



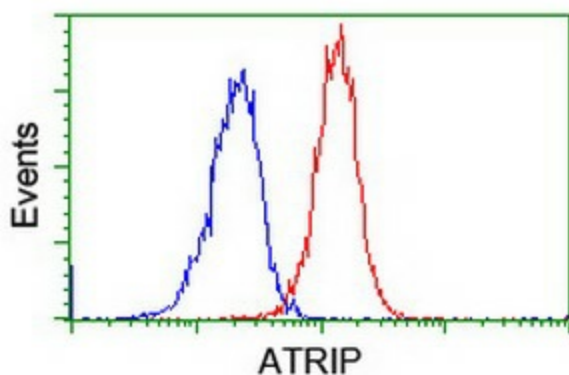
Anti-ATRIP mouse monoclonal antibody ([TA504641]) immunofluorescent staining of COS7 cells transiently transfected by pCMV6-ENTRY ATRIP ([RC223562]).



HEK293T cells transfected with either [RC223562] overexpress plasmid (Red) or empty vector control plasmid (Blue) were immunostained by anti-ATRIP antibody ([TA504641]), and then analyzed by flow cytometry.



Flow cytometric Analysis of HeLa cells, using anti-ATRIP antibody ([TA504641]), (Red), compared to a nonspecific negative control antibody, (Blue).



Flow cytometric Analysis of Jurkat cells, using anti-ATRIP antibody ([TA504641]), (Red), compared to a nonspecific negative control antibody, (Blue).