

## Product datasheet for **TA504640AM**

### ATRIP Mouse Monoclonal Antibody (Biotin conjugated) [Clone ID: OTI4A8]

#### Product data:

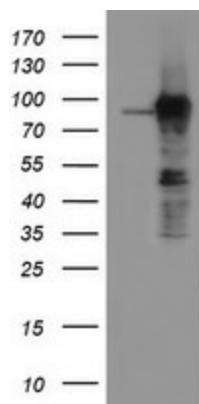
Product Type:	Primary Antibodies
Clone Name:	OTI4A8
Applications:	IF, WB
Recommended Dilution:	WB 1:4000, IF 1:100
Reactivity:	Human
Host:	Mouse
Isotype:	IgG2b
Clonality:	Monoclonal
Immunogen:	Human recombinant protein fragment corresponding to amino acids 42-309 of human ATRIP(NP_569055) produced in E.coli.
Formulation:	PBS (pH 7.3) containing 1% BSA, 50% glycerol and 0.02% sodium azide.
Concentration:	0.5 mg/ml
Purification:	Purified from mouse ascites fluids or tissue culture supernatant by affinity chromatography (protein A/G)
Conjugation:	Biotin
Storage:	Store at -20°C as received.
Stability:	Stable for 12 months from date of receipt.
Predicted Protein Size:	85.7 kDa
Gene Name:	ATR interacting protein
Database Link:	<a href="#">NP_569055</a> <a href="#">Entrez Gene 84126 Human</a> <a href="#">Q8WXE1</a>
Background:	The product of this gene is an essential component of the DNA damage checkpoint, and binds to single-stranded DNA coated with replication protein A that accumulates at sites of DNA damage. The encoded protein interacts with the ataxia telangiectasia and Rad3 related protein, a checkpoint kinase, resulting in accumulation of the kinase at intranuclear foci induced by DNA damage. Multiple transcript variants encoding different isoforms have been found for this gene. [provided by RefSeq]



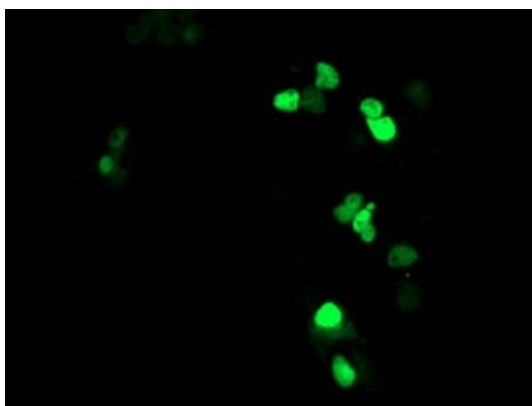
[View online »](#)

Synonyms: DKFZp762J2115; FLJ12343; MGC20625; MGC21482; MGC26740

### Product images:



HEK293T cells were transfected with the pCMV6-ENTRY control (Left lane) or pCMV6-ENTRY ATRIP ([RC223562], Right lane) cDNA for 48 hrs and lysed. Equivalent amounts of cell lysates (5 ug per lane) were separated by SDS-PAGE and immunoblotted with anti-ATRIP. Positive lysates [LY408977] (100ug) and [LC408977] (20ug) can be purchased separately from OriGene.



Anti-ATRIP mouse monoclonal antibody ([TA504640]) immunofluorescent staining of COS7 cells transiently transfected by pCMV6-ENTRY ATRIP ([RC223562]).