

Product datasheet for **TA504636AM**

CAMLG Mouse Monoclonal Antibody (Biotin conjugated) [Clone ID: OTI1H3]

Product data:

Product Type:	Primary Antibodies
Clone Name:	OTI1H3
Applications:	FC, IF, WB
Recommended Dilution:	WB 1:2000, IF 1:100, FLOW 1:100
Reactivity:	Human, Mouse, Rat
Host:	Mouse
Isotype:	IgG2b
Clonality:	Monoclonal
Immunogen:	Full length human recombinant protein of human CAMLG(NP_001736) produced in HEK293T cell.
Formulation:	PBS (pH 7.3) containing 1% BSA, 50% glycerol and 0.02% sodium azide.
Concentration:	0.5 mg/ml
Purification:	Purified from mouse ascites fluids or tissue culture supernatant by affinity chromatography (protein A/G)
Conjugation:	Biotin
Storage:	Store at -20°C as received.
Stability:	Stable for 12 months from date of receipt.
Predicted Protein Size:	32.8 kDa
Gene Name:	calcium modulating ligand
Database Link:	NP_001736 Entrez Gene 819 Human P49069



[View online »](#)

Background:

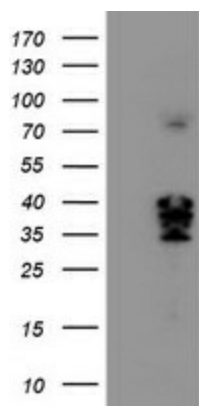
The immunosuppressant drug cyclosporin A blocks a calcium-dependent signal from the T-cell receptor (TCR) that normally leads to T-cell activation. When bound to cyclophilin B, cyclosporin A binds and inactivates the key signaling intermediate calcineurin. The protein encoded by this gene functions similarly to cyclosporin A, binding to cyclophilin B and acting downstream of the TCR and upstream of calcineurin by causing an influx of calcium. This integral membrane protein appears to be a new participant in the calcium signal transduction pathway, implicating cyclophilin B in calcium signaling, even in the absence of cyclosporin. [provided by RefSeq]

Synonyms:

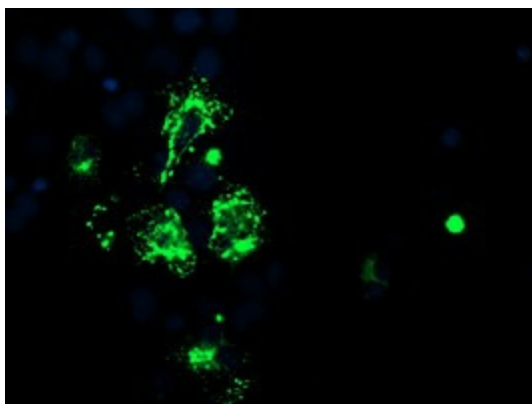
CAML

Protein Families:

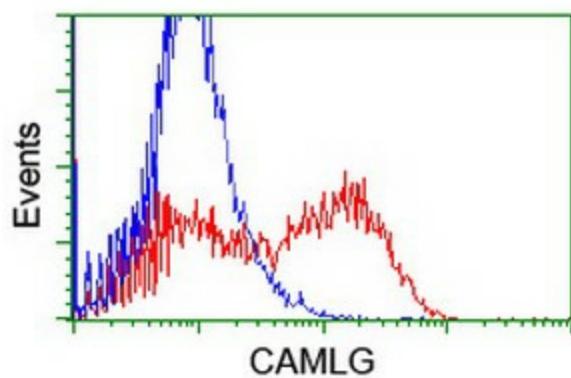
Druggable Genome

Product images:

HEK293T cells were transfected with the pCMV6-ENTRY control (Left lane) or pCMV6-ENTRY CAMLG ([RC218292], Right lane) cDNA for 48 hrs and lysed. Equivalent amounts of cell lysates (5 ug per lane) were separated by SDS-PAGE and immunoblotted with anti-CAMLG. Positive lysates [LY419768] (100ug) and [LC419768] (20ug) can be purchased separately from OriGene.



Anti-CAMLG mouse monoclonal antibody ([TA504636]) immunofluorescent staining of COS7 cells transiently transfected by pCMV6-ENTRY CAMLG ([RC218292]).



HEK293T cells transfected with either [RC218292] overexpress plasmid (Red) or empty vector control plasmid (Blue) were immunostained by anti-CAMLG antibody ([TA504636]), and then analyzed by flow cytometry.