

## Product datasheet for **TA504630BM**

### SAT2 Mouse Monoclonal Antibody (HRP conjugated) [Clone ID: OTI2A3]

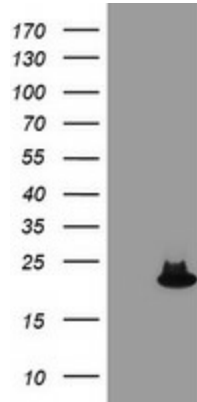
#### Product data:

Product Type:	Primary Antibodies
Clone Name:	OTI2A3
Applications:	FC, IF, WB
Recommended Dilution:	WB 1:500~2000, IF 1:100, FLOW 1:100
Reactivity:	Human, Monkey
Host:	Mouse
Isotype:	IgG1
Clonality:	Monoclonal
Immunogen:	Full length human recombinant protein of human SAT2(NP_597998) produced in HEK293T cell.
Formulation:	PBS (pH 7.3) containing 1% BSA, 50% glycerol.
Concentration:	0.5 mg/ml
Purification:	Purified from mouse ascites fluids or tissue culture supernatant by affinity chromatography (protein A/G)
Conjugation:	HRP
Storage:	Store at -20°C as received.
Stability:	Stable for 12 months from date of receipt.
Predicted Protein Size:	19 kDa
Gene Name:	spermidine/spermine N1-acetyltransferase family member 2
Database Link:	<a href="#">NP_597998</a> <a href="#">Entrez Gene 716044 Monkey</a> <a href="#">Entrez Gene 112483 Human</a> <a href="#">Q96F10</a>
Synonyms:	SSAT2
Protein Pathways:	Arginine and proline metabolism, Metabolic pathways

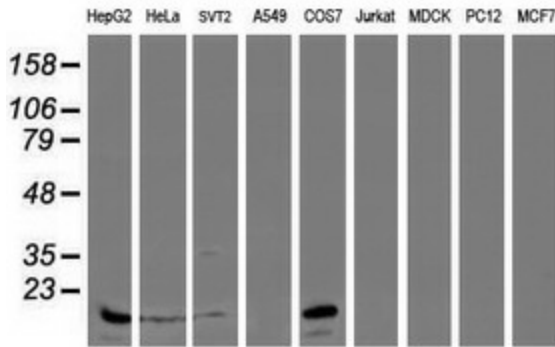


[View online »](#)

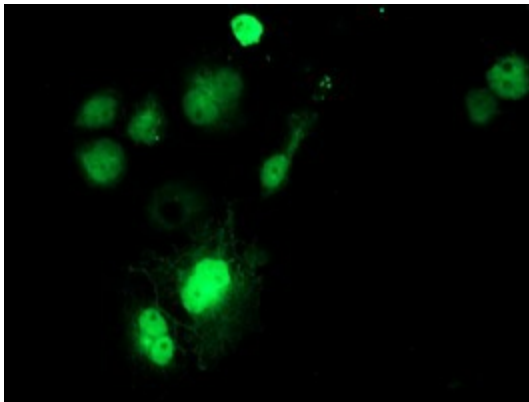
**Product images:**



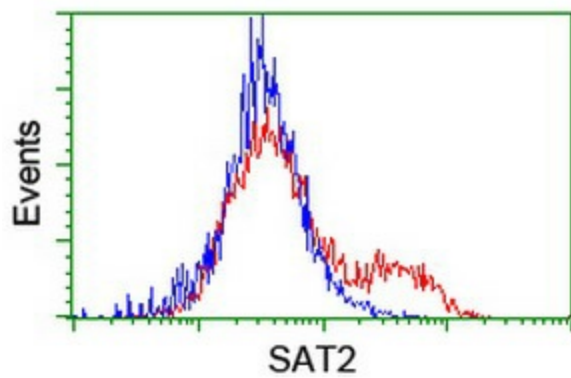
HEK293T cells were transfected with the pCMV6-ENTRY control (Left lane) or pCMV6-ENTRY SAT2 ([RC204044], Right lane) cDNA for 48 hrs and lysed. Equivalent amounts of cell lysates (5 ug per lane) were separated by SDS-PAGE and immunoblotted with anti-SAT2. Positive lysates [LY408821] (100ug) and [LC408821] (20ug) can be purchased separately from OriGene.



Western blot analysis of extracts (35ug) from 9 different cell lines by using anti-SAT2 monoclonal antibody (HepG2: human; HeLa: human; SVT2: mouse; A549: human; COS7: monkey; Jurkat: human; MDCK: canine; PC12: rat; MCF7: human).



Anti-SAT2 mouse monoclonal antibody ([TA504630]) immunofluorescent staining of COS7 cells transiently transfected by pCMV6-ENTRY SAT2 ([RC204044]).



HEK293T cells transfected with either [RC204044] overexpress plasmid (Red) or empty vector control plasmid (Blue) were immunostained by anti-SAT2 antibody ([TA504630]), and then analyzed by flow cytometry.