

Product datasheet for **TA504626BM**

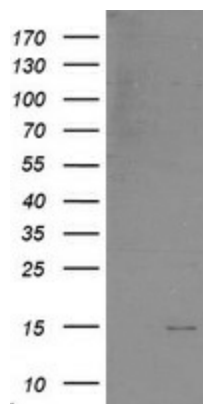
XTP4 (MIEN1) Mouse Monoclonal Antibody (HRP conjugated) [Clone ID: OTI1D4]

Product data:

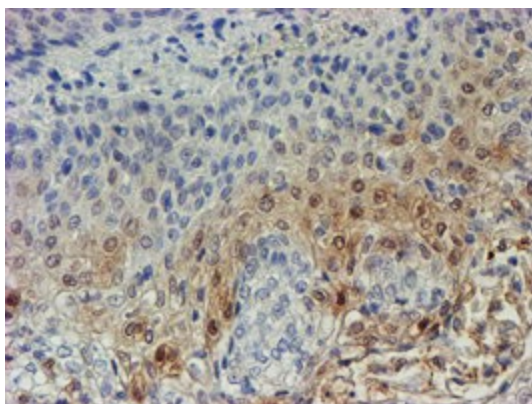
| | |
|-------------------------|---|
| Product Type: | Primary Antibodies |
| Clone Name: | OTI1D4 |
| Applications: | IHC, WB |
| Recommended Dilution: | WB 1:1000, IHC 1:150 |
| Reactivity: | Human, Mouse |
| Host: | Mouse |
| Isotype: | IgG1 |
| Clonality: | Monoclonal |
| Immunogen: | Full length human recombinant protein of human C17orf37(NP_115715) produced in E.coli. |
| Formulation: | PBS (pH 7.3) containing 1% BSA, 50% glycerol. |
| Concentration: | 0.5 mg/ml |
| Purification: | Purified from mouse ascites fluids or tissue culture supernatant by affinity chromatography (protein A/G) |
| Conjugation: | HRP |
| Storage: | Store at -20°C as received. |
| Stability: | Stable for 12 months from date of receipt. |
| Predicted Protein Size: | 12.2 kDa |
| Gene Name: | migration and invasion enhancer 1 |
| Database Link: | NP_115715 Entrez Gene 103742 Mouse Entrez Gene 84299 Human Q9BRT3 |
| Synonyms: | C17orf37; C35; ORB3; RDX12; XTP4 |



[View online »](#)

Product images:

HEK293T cells were transfected with the pCMV6-ENTRY control (Left lane) or pCMV6-ENTRY C17orf37 ([RC203346], Right lane) cDNA for 48 hrs and lysed. Equivalent amounts of cell lysates (5 ug per lane) were separated by SDS-PAGE and immunoblotted with anti-C17orf37. Positive lysates [LY410176] (100ug) and [LC410176] (20ug) can be purchased separately from OriGene.



Immunohistochemical staining of paraffin-embedded Carcinoma of Human bladder tissue using anti-C17orf37 mouse monoclonal antibody. (Heat-induced epitope retrieval by 10mM citric buffer, pH6.0, 100°C for 10min, [TA504626])