

## Product datasheet for **TA504623S**

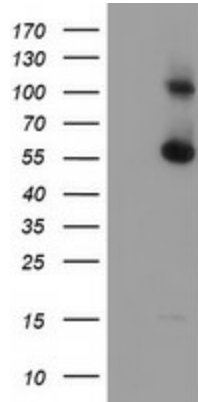
### **RBM46 Mouse Monoclonal Antibody [Clone ID: OTI1D6]**

#### **Product data:**

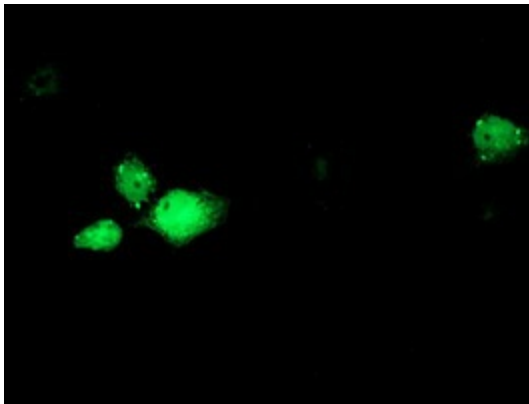
Product Type:	Primary Antibodies
Clone Name:	OTI1D6
Applications:	FC, IF, WB
Recommended Dilution:	WB 1:1000, IF 1:100, FLOW 1:100
Reactivity:	Human, Mouse, Rat
Host:	Mouse
Isotype:	IgG1
Clonality:	Monoclonal
Immunogen:	Full length human recombinant protein of human RBM46(NP_659416) produced in HEK293T cell.
Formulation:	PBS (pH 7.3) containing 1% BSA, 50% glycerol and 0.02% sodium azide.
Concentration:	0.81 mg/ml
Purification:	Purified from mouse ascites fluids or tissue culture supernatant by affinity chromatography (protein A/G)
Conjugation:	Unconjugated
Storage:	Store at -20°C as received.
Stability:	Stable for 12 months from date of receipt.
Predicted Protein Size:	59.8 kDa
Gene Name:	RNA binding motif protein 46
Database Link:	<a href="#">NP_659416</a> <a href="#">Entrez Gene 310548 Rat</a> <a href="#">Entrez Gene 633285 Mouse</a> <a href="#">Entrez Gene 166863 Human</a> <a href="#">Q8TBY0</a>
Synonyms:	CT68



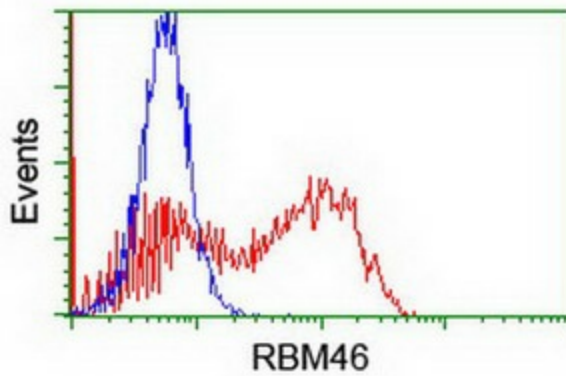
[View online »](#)

**Product images:**


HEK293T cells were transfected with the pCMV6-ENTRY control (Cat# [PS100001], Left lane) or pCMV6-ENTRY RBM46 (Cat# [RC205574], Right lane) cDNA for 48 hrs and lysed. Equivalent amounts of cell lysates (5 ug per lane) were separated by SDS-PAGE and immunoblotted with anti-RBM46 (Cat# [TA504623]). Positive lysates [LY408120] (100ug) and [LC408120] (20ug) can be purchased separately from OriGene.



Anti-RBM46 mouse monoclonal antibody ([TA504623]) immunofluorescent staining of COS7 cells transiently transfected by pCMV6-ENTRY RBM46 ([RC205574]).



HEK293T cells transfected with either [RC205574] overexpress plasmid (Red) or empty vector control plasmid (Blue) were immunostained by anti-RBM46 antibody ([TA504623]), and then analyzed by flow cytometry.