

## Product datasheet for **TA504614BM**

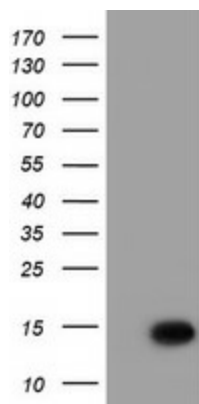
### **XTP4 (MIEN1) Mouse Monoclonal Antibody (HRP conjugated) [Clone ID: OTI1G2]**

#### **Product data:**

Product Type:	Primary Antibodies
Clone Name:	OTI1G2
Applications:	WB
Recommended Dilution:	WB 1:2000
Reactivity:	Human, Mouse
Host:	Mouse
Isotype:	IgG1
Clonality:	Monoclonal
Immunogen:	Full length human recombinant protein of human C17orf37(NP_115715) produced in E.coli.
Formulation:	PBS (pH 7.3) containing 1% BSA, 50% glycerol.
Concentration:	0.5 mg/ml
Purification:	Purified from mouse ascites fluids or tissue culture supernatant by affinity chromatography (protein A/G)
Conjugation:	HRP
Storage:	Store at -20°C as received.
Stability:	Stable for 12 months from date of receipt.
Predicted Protein Size:	12.2 kDa
Gene Name:	migration and invasion enhancer 1
Database Link:	<a href="#">NP_115715</a> <a href="#">Entrez Gene 103742 Mouse</a> <a href="#">Entrez Gene 84299 Human</a> <a href="#">Q9BRT3</a>
Synonyms:	C17orf37; C35; ORB3; RDX12; XTP4



[View online »](#)

**Product images:**

HEK293T cells were transfected with the pCMV6-ENTRY control (Left lane) or pCMV6-ENTRY C17orf37 ([RC203346], Right lane) cDNA for 48 hrs and lysed. Equivalent amounts of cell lysates (5 ug per lane) were separated by SDS-PAGE and immunoblotted with anti-C17orf37. Positive lysates [LY410176] (100ug) and [LC410176] (20ug) can be purchased separately from OriGene.