

## Product datasheet for **TA504612AM**

### **C21ORF56 (SPATC1L) Mouse Monoclonal Antibody (Biotin conjugated) [Clone ID: OTI2G5]**

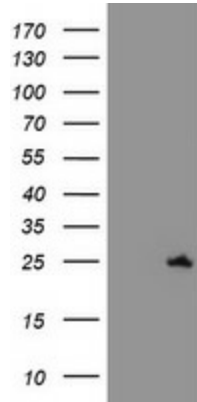
#### Product data:

Product Type:	Primary Antibodies
Clone Name:	OTI2G5
Applications:	FC, WB
Recommended Dilution:	WB 1:500~1000, FLOW 1:100
Reactivity:	Human, Mouse, Rat
Host:	Mouse
Isotype:	IgG1
Clonality:	Monoclonal
Immunogen:	Full length human recombinant protein of human C21orf56(NP_115637) produced in HEK293T cell.
Formulation:	PBS (pH 7.3) containing 1% BSA, 50% glycerol and 0.02% sodium azide.
Concentration:	0.5 mg/ml
Purification:	Purified from mouse ascites fluids or tissue culture supernatant by affinity chromatography (protein A/G)
Conjugation:	Biotin
Storage:	Store at -20°C as received.
Stability:	Stable for 12 months from date of receipt.
Predicted Protein Size:	20.9 kDa
Gene Name:	spermatogenesis and centriole associated 1 like
Database Link:	<a href="#">NP_115637</a> <a href="#">Entrez Gene 76573 Mouse</a> <a href="#">Entrez Gene 499418 Rat</a> <a href="#">Entrez Gene 84221 Human</a> <a href="#">Q9H0A9</a>
Synonyms:	C21orf56

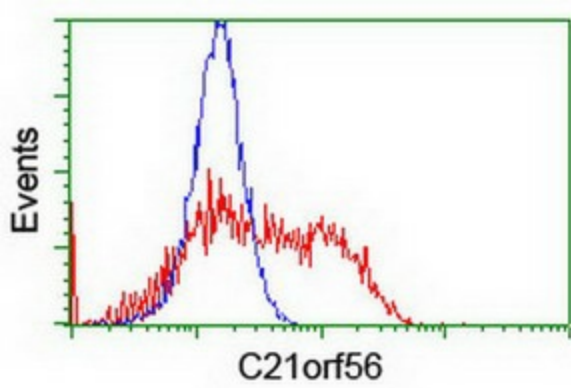


[View online »](#)

**Product images:**



HEK293T cells were transfected with the pCMV6-ENTRY control (Left lane) or pCMV6-ENTRY C21orf56 ([RC224562], Right lane) cDNA for 48 hrs and lysed. Equivalent amounts of cell lysates (5 ug per lane) were separated by SDS-PAGE and immunoblotted with anti-C21orf56. Positive lysates [LY410249] (100ug) and [LC410249] (20ug) can be purchased separately from OriGene.



HEK293T cells transfected with either [RC224562] overexpress plasmid (Red) or empty vector control plasmid (Blue) were immunostained by anti-C21orf56 antibody ([TA504612]), and then analyzed by flow cytometry.