

Product datasheet for TA504607M

CRYZL1 Mouse Monoclonal Antibody [Clone ID: OTI1C9]

Product data:

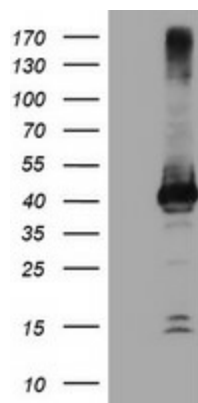
Product Type:	Primary Antibodies
Clone Name:	OTI1C9
Applications:	FC, WB
Recommended Dilution:	WB 1:500~2000, FLOW 1:100
Reactivity:	Human, Dog, Rat, Monkey, Mouse
Host:	Mouse
Isotype:	IgG1
Clonality:	Monoclonal
Immunogen:	Full length human recombinant protein of human CRYZL1(NP_665857) produced in HEK293T cell.
Formulation:	PBS (pH 7.3) containing 1% BSA, 50% glycerol and 0.02% sodium azide.
Concentration:	0.67 mg/ml
Purification:	Purified from mouse ascites fluids or tissue culture supernatant by affinity chromatography (protein A/G)
Conjugation:	Unconjugated
Storage:	Store at -20°C as received.
Stability:	Stable for 12 months from date of receipt.
Predicted Protein Size:	38.5 kDa
Gene Name:	crystallin zeta like 1
Database Link:	NP_665857 Entrez Gene 66609 Mouse Entrez Gene 288256 Rat Entrez Gene 478408 Dog Entrez Gene 698723 Monkey Entrez Gene 9946 Human O95825
Background:	This gene encodes a protein that has sequence similarity to zeta crystallin, also known as quinone oxidoreductase. This zeta crystallin-like protein also contains an NAD(P)H binding site. Alternatively spliced transcript variants have been observed but their full-length nature has not been completely determined. [provided by RefSeq]. COMPLETENESS: complete on the 3' end.


[View online »](#)

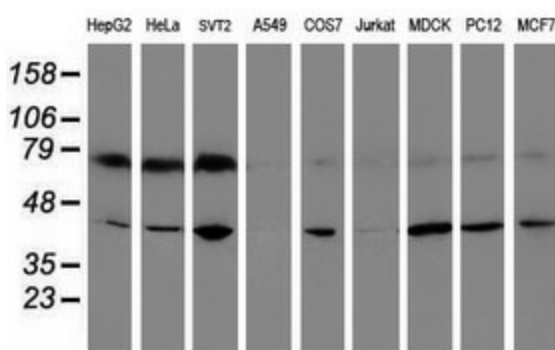
Synonyms: 4P11; QOH-1

Protein Families: Druggable Genome

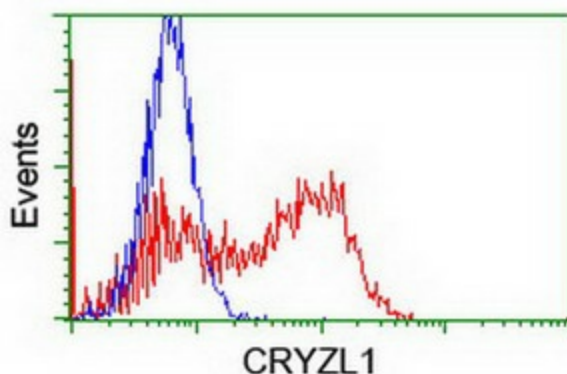
Product images:



HEK293T cells were transfected with the pCMV6-ENTRY control (Left lane) or pCMV6-ENTRY CRYZL1 ([RC205953], Right lane) cDNA for 48 hrs and lysed. Equivalent amounts of cell lysates (5 ug per lane) were separated by SDS-PAGE and immunoblotted with anti-CRYZL1. Positive lysates [LY407853] (100ug) and [LC407853] (20ug) can be purchased separately from OriGene.



Western blot analysis of extracts (35ug) from 9 different cell lines by using anti-CRYZL1 monoclonal antibody.



HEK293T cells transfected with either [RC205953] overexpress plasmid (Red) or empty vector control plasmid (Blue) were immunostained by anti-CRYZL1 antibody ([TA504607]), and then analyzed by flow cytometry.