

Product datasheet for **TA504601M**

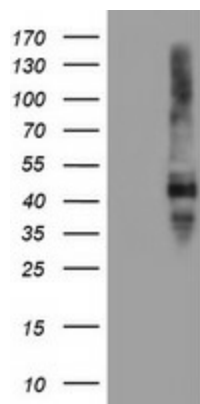
SERPINE2 Mouse Monoclonal Antibody [Clone ID: OTI1G8]

Product data:

Product Type:	Primary Antibodies
Clone Name:	OTI1G8
Applications:	WB
Recommended Dilution:	WB 1:2000
Reactivity:	Human, Mouse
Host:	Mouse
Isotype:	IgG1
Clonality:	Monoclonal
Immunogen:	Full length human recombinant protein of human SERPINE2(NP_006207) produced in HEK293T cell.
Formulation:	PBS (pH 7.3) containing 1% BSA, 50% glycerol and 0.02% sodium azide.
Concentration:	0.81 mg/ml
Purification:	Purified from mouse ascites fluids or tissue culture supernatant by affinity chromatography (protein A/G)
Conjugation:	Unconjugated
Storage:	Store at -20°C as received.
Stability:	Stable for 12 months from date of receipt.
Predicted Protein Size:	41.8 kDa
Gene Name:	serpin family E member 2
Database Link:	NP_006207 Entrez Gene 20720 Mouse Entrez Gene 5270 Human P07093
Synonyms:	GDN; GDNPF; PI-7; PI7; PN-1; PN1; PNI
Protein Families:	Druggable Genome, Secreted Protein



[View online »](#)

Product images:

HEK293T cells were transfected with the pCMV6-ENTRY control (Left lane) or pCMV6-ENTRY SERPINE2 ([RC204904], Right lane) cDNA for 48 hrs and lysed. Equivalent amounts of cell lysates (5 ug per lane) were separated by SDS-PAGE and immunoblotted with anti-SERPINE2. Positive lysates [LY416795] (100ug) and [LC416795] (20ug) can be purchased separately from OriGene.