

## Product datasheet for **TA504601BM**

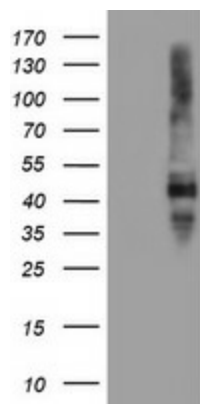
### **SERPINE2 Mouse Monoclonal Antibody (HRP conjugated) [Clone ID: OTI1G8]**

#### **Product data:**

|                         |   |
|-------------------------|---|
| Product Type:           | Primary Antibodies  |
| Clone Name:             | OTI1G8  |
| Applications:           | WB  |
| Recommended Dilution:   | WB 1:2000   |
| Reactivity:             | Human, Mouse  |
| Host:                   | Mouse   |
| Isotype:                | IgG1  |
| Clonality:              | Monoclonal  |
| Immunogen:              | Full length human recombinant protein of human SERPINE2(NP_006207) produced in HEK293T cell.  |
| Formulation:            | PBS (pH 7.3) containing 1% BSA, 50% glycerol.   |
| Concentration:          | 0.5 mg/ml   |
| Purification:           | Purified from mouse ascites fluids or tissue culture supernatant by affinity chromatography (protein A/G)                             |
| Conjugation:            | HRP   |
| Storage:                | Store at -20°C as received.   |
| Stability:              | Stable for 12 months from date of receipt.  |
| Predicted Protein Size: | 41.8 kDa  |
| Gene Name:              | serpin family E member 2  |
| Database Link:          | <a href="#">NP_006207</a><br><a href="#">Entrez Gene 20720 Mouse</a> <a href="#">Entrez Gene 5270 Human</a><br><a href="#">P07093</a> |
| Synonyms:               | GDN; GDNPF; PI-7; PI7; PN-1; PN1; PNI   |
| Protein Families:       | Druggable Genome, Secreted Protein  |



[View online »](#)

**Product images:**

HEK293T cells were transfected with the pCMV6-ENTRY control (Left lane) or pCMV6-ENTRY SERPINE2 ([RC204904], Right lane) cDNA for 48 hrs and lysed. Equivalent amounts of cell lysates (5 ug per lane) were separated by SDS-PAGE and immunoblotted with anti-SERPINE2. Positive lysates [LY416795] (100ug) and [LC416795] (20ug) can be purchased separately from OriGene.