

Product datasheet for **TA504596S**

SERPINE2 Mouse Monoclonal Antibody [Clone ID: OTI4E4]

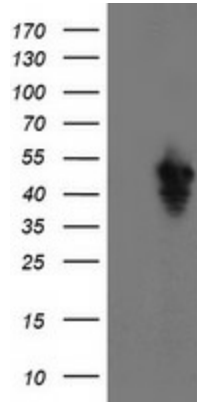
Product data:

Product Type:	Primary Antibodies
Clone Name:	OTI4E4
Applications:	FC, WB
Recommended Dilution:	WB 1:500~2000, FLOW 1:100
Reactivity:	Human, Dog, Monkey, Mouse
Host:	Mouse
Isotype:	IgG1
Clonality:	Monoclonal
Immunogen:	Full length human recombinant protein of human SERPINE2(NP_006207) produced in HEK293T cell.
Formulation:	PBS (pH 7.3) containing 1% BSA, 50% glycerol and 0.02% sodium azide.
Concentration:	4.02 mg/ml
Purification:	Purified from mouse ascites fluids or tissue culture supernatant by affinity chromatography (protein A/G)
Conjugation:	Unconjugated
Storage:	Store at -20°C as received.
Stability:	Stable for 12 months from date of receipt.
Predicted Protein Size:	41.8 kDa
Gene Name:	serpin family E member 2
Database Link:	NP_006207 Entrez Gene 20720 Mouse Entrez Gene 608930 Dog Entrez Gene 707121 Monkey Entrez Gene 5270 Human P07093
Synonyms:	GDN; GDNPF; PI-7; PI7; PN-1; PN1; PNI
Protein Families:	Druggable Genome, Secreted Protein

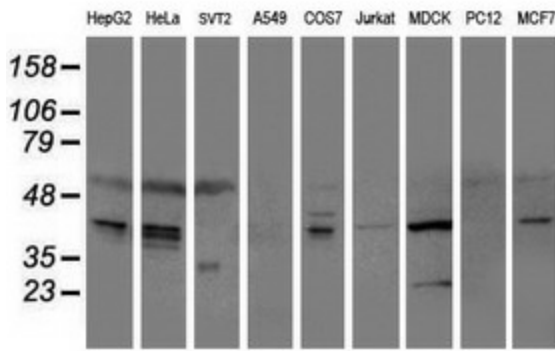


[View online »](#)

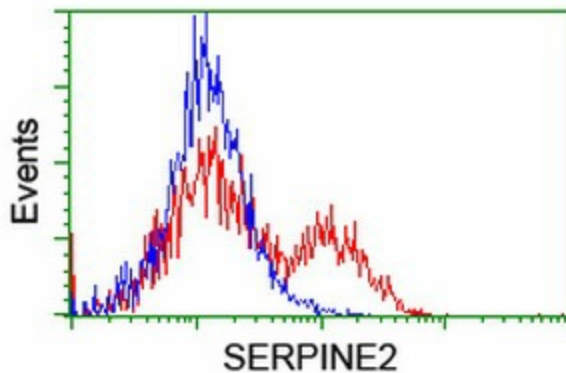
Product images:



HEK293T cells were transfected with the pCMV6-ENTRY control (Left lane) or pCMV6-ENTRY SERPINE2 ([RC204904], Right lane) cDNA for 48 hrs and lysed. Equivalent amounts of cell lysates (5 ug per lane) were separated by SDS-PAGE and immunoblotted with anti-SERPINE2. Positive lysates [LY416795] (100ug) and [LC416795] (20ug) can be purchased separately from OriGene.



Western blot analysis of extracts (35ug) from 9 different cell lines by using anti-SERPINE2 monoclonal antibody (HepG2: human; HeLa: human; SVT2: mouse; A549: human; COS7: monkey; Jurkat: human; MDCK: canine; PC12: rat; MCF7: human).



HEK293T cells transfected with either [RC204904] overexpress plasmid (Red) or empty vector control plasmid (Blue) were immunostained by anti-SERPINE2 antibody ([TA504596]), and then analyzed by flow cytometry.