

## Product datasheet for **TA504593AM**

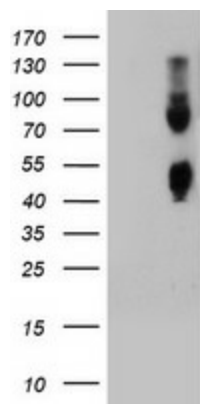
### CPO Mouse Monoclonal Antibody (Biotin conjugated) [Clone ID: OTI4A9]

#### Product data:

|                         |   |
|-------------------------|---|
| Product Type:           | Primary Antibodies  |
| Clone Name:             | OTI4A9  |
| Applications:           | WB  |
| Recommended Dilution:   | WB 1:2000   |
| Reactivity:             | Human   |
| Host:                   | Mouse   |
| Isotype:                | IgG1  |
| Clonality:              | Monoclonal  |
| Immunogen:              | Full length human recombinant protein of human CPO(NP_775100) produced in HEK293T cell.                   |
| Formulation:            | PBS (pH 7.3) containing 1% BSA, 50% glycerol and 0.02% sodium azide.                                      |
| Concentration:          | 0.5 mg/ml   |
| Purification:           | Purified from mouse ascites fluids or tissue culture supernatant by affinity chromatography (protein A/G) |
| Conjugation:            | Biotin  |
| Storage:                | Store at -20°C as received.   |
| Stability:              | Stable for 12 months from date of receipt.  |
| Predicted Protein Size: | 42.3 kDa  |
| Gene Name:              | carboxypeptidase O  |
| Database Link:          | <a href="#">NP_775100</a><br><a href="#">Entrez Gene 130749 Human</a><br><a href="#">Q8IVL8</a>           |
| Background:             | This gene is a member of the metallocarboxypeptidase gene family. [provided by RefSeq]                    |
| Synonyms:               | MGC138281; MGC138283  |
| Protein Families:       | Druggable Genome, Protease, Secreted Protein  |



[View online »](#)

**Product images:**

HEK293T cells were transfected with the pCMV6-ENTRY control (Left lane) or pCMV6-ENTRY CPO ([RC211315], Right lane) cDNA for 48 hrs and lysed. Equivalent amounts of cell lysates (5 ug per lane) were separated by SDS-PAGE and immunoblotted with anti-CPO. Positive lysates [LY403542] (100ug) and [LC403542] (20ug) can be purchased separately from OriGene.