

## Product datasheet for **TA504589BM**

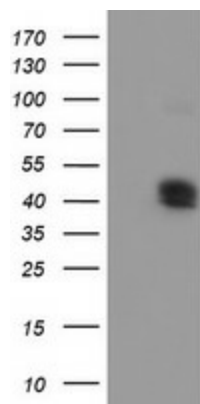
### CPO Mouse Monoclonal Antibody (HRP conjugated) [Clone ID: OTI1A1]

#### Product data:

Product Type:	Primary Antibodies
Clone Name:	OTI1A1
Applications:	WB
Recommended Dilution:	WB 1:500~1000
Reactivity:	Human
Host:	Mouse
Isotype:	IgG1
Clonality:	Monoclonal
Immunogen:	Full length human recombinant protein of human CPO(NP_775110) produced in HEK293T cell.
Formulation:	PBS (pH 7.3) containing 1% BSA, 50% glycerol.
Concentration:	0.5 mg/ml
Purification:	Purified from mouse ascites fluids or tissue culture supernatant by affinity chromatography (protein A/G)
Conjugation:	HRP
Storage:	Store at -20°C as received.
Stability:	Stable for 12 months from date of receipt.
Predicted Protein Size:	42.3 kDa
Gene Name:	carboxypeptidase O
Database Link:	<a href="#">NP_775100</a> <a href="#">Entrez Gene 130749 Human</a> <a href="#">Q8IVL8</a>
Background:	This gene is a member of the metallocarboxypeptidase gene family. [provided by RefSeq]
Synonyms:	MGC138281; MGC138283
Protein Families:	Druggable Genome, Protease, Secreted Protein



[View online »](#)

**Product images:**

HEK293T cells were transfected with the pCMV6-ENTRY control (Left lane) or pCMV6-ENTRY CPO ([RC211315], Right lane) cDNA for 48 hrs and lysed. Equivalent amounts of cell lysates (5 ug per lane) were separated by SDS-PAGE and immunoblotted with anti-CPO. Positive lysates [LY403542] (100ug) and [LC403542] (20ug) can be purchased separately from OriGene.